

# Dixon / Solano RCD Water Quality Coalition

## UPDATE

Volume 8 Issue 1

September 2013



RCD BOARDS OF DIRECTORS

### SOLANO RCD

- Joe Martinez
- Paul Lum
- Kurt Balasek
- Darrell Hill
- John Knowles
- Randi Thompson
- Glenda Riddle
- Terry Riddle, *Associate*
- Kathi Stutz, *Associate*

### DIXON RCD

- Mark Holdener
- Rick Martinez
- Dave Viguie
- Tom Bors
- Sam Beukelman
- Jim Campbell, *Associate*

### COALITION ADVISORY COMMITTEE MEMBERS

- Bruce Brazelton
- Joe Martinez
- Cork McIsaac
- Paul Lum
- Guy Garcia
- Rick Martinez
- Spencer Bei
- Dave Viguie
- Roy Gill
- Rachael Long, UCCE
- Jim Allan, Ag Commissioner

### ~INFORMATIONAL MEETING~

Dixon/Solano Coalition  
ALL MEMBERS are invited

**Monday October 28**

6pm City of Dixon  
Senior Multiuse Center

### New Program Requirements Due to take effect MARCH 2014!

NOTE: It is important to keep in mind that Coalition Staff (at the local & regional level), Coalition Legal Counsel, Coalition Members and representatives from agricultural organizations have been working for 3+ years to attempt to make changes to the proposed new requirements that we believe will be the most burdensome to our members. We have had varied success. This process has left us with a sense of items within the Order that may have a chance to be modified and those that Regional Board is not likely to adjust. Although feedback to the Regional Board regarding the effects of the new requirements will always be important to communicate, we do not anticipate much flexibility for changes to what is in the Administrative DRAFT of the Sacramento Valley Order. Although we have highlighted the relative high water quality of Sac Valley as further reason to reduce requirements on individual members, so far the requirements are essentially the same as those adopted for other Coalitions in the Central Valley.

Below is our summary of the key elements to the new program that will have the most impact on individual members and the Dixon/Solano Coalition Program as a whole.

#### New Requirements for Individual Members

1. Farm Evaluations\*
2. Nitrogen Management Plans
3. Sediment & Erosion Control Plans

\*The first of these reports will need to be completed for each farm in the Fall/Winter 2014! Dixon/Solano Coalition plans to hold workshops for our members to help them comply.

~ Stay Informed ~

on New Requirements

Visit our Website for updates  
[www.dixonrcd.org/irrigated\\_lands](http://www.dixonrcd.org/irrigated_lands)

~ATTEND~

**Regional Board Public Workshop**

**Wed. October 30 at 10 a.m.**

**Atwood Hall Colusa Fairgrounds**

#### Expansion to Groundwater Quality

Our Regional Coalition (SVWQC) is developing a Groundwater Quality Assessment Report (GAR) for the Sac Valley that will determine local areas that are vulnerable to groundwater issues (focused on nitrates & salinity). There will be additional reporting requirements for members within those areas.

#### New Requirements for Local Coalitions

Local Coalitions within the Sacramento Region will be tasked with complex farm level data collection, management and reporting tasks. We are in the process of preparing for these tasks and it is important for members to be aware of the change in workload for the Coalition.

**IT IS CRITICAL THAT MEMBERS UNDERSTAND THE CHANGES THAT ARE COMING BECAUSE CHOOSING TO CONTINUE TO COMPLY UNDER THE GROUP OPTION (INSTEAD OF GETTING YOUR OWN PERMIT WITH REGIONAL BOARD), MEANS YOU ARE AGREEING TO THESE NEW REQUIREMENTS. AS ALWAYS PLEASE FEEL FREE TO CONTACT US WITH ANY QUESTIONS ~ (707) 678-1655 & WATCH FOR UPDATES ON OUR WEBSITE.**

#### CRITICAL DATES FOR NEW ORDER REQUIREMENTS

DRAFT Order Released	September 12, 2013
Public Hearing	October 30, 2013
FINAL Order	March 11-12, 2014
Confirmation of Enrollment by Members	August 30, 2014
DRAFT Templates for Farm Reporting	June 1—Sept 30, 2014
Individual Farm Evaluation Reports DUE	March 1, 2015

### Dixon/Solano Coalition July 2012 - June 2013 Finances

<b>Total Income 07/12—06/13</b>	<b>\$ 228,503</b>
Participating acres fees	\$ 227,788
Interest	\$ 714
<b>Total Expenses 07/12—06/13</b>	<b>\$ 258,483</b>
RCD Staff	\$ 88,373
Direct Costs	\$ 3,536
Monitoring Costs	\$ 79,936
Fees to SVWQC	\$ 22,870
Fees to Regional Board	\$ 63,767
<b>Fund Balance 07/13</b>	<b>\$ 47,563*</b>

### Dixon/Solano Coalition Projected July 2013 - June 2014 Finances

<b>Budgeted Income 07/13—06/14</b>	<b>\$ 287,575</b>
Participating acres fees	\$ 286,725
Interest	\$ 850
<b>Budgeted Expenses 07/13—06/14</b>	<b>\$ 286,777</b>
RCD Staff	\$ 96,000
Direct Costs	\$ 10,550
Monitoring Costs	\$ 93,000
Fees to SVWQC	\$ 23,000
Fees to Regional Board	\$ 64,227
<b>06/14 Fund Balance (projected)</b>	<b>\$ 66,198*</b>

\*The Coalition policy is to maintain a minimum fund balance of \$50,000 to cover any additional required monitoring as well as to maintain a positive cash flow throughout the membership year. Our objective remains to keep program costs as low as possible, while still providing members the tools necessary to maintain compliance with water quality regulations. Since November 2003 Coalition Members have paid a total of \$14.80/acre in membership fees, for an average of \$1.40/acre/year. The increase of 50 cents/acre for the 2013-2014 program year is due to a combination of increased assessment year monitoring costs, an anticipated increase in fees to the State and increased Coalition staff time to meet the current program requirements and to work with Regional Board on requirements for the new program. As the requirements take effect for the new program, we anticipate member fees will increase again. We continue to look for ways to join with other Coalition efforts to share costs.

### Expertise Within Our Ranks ~ Please Utilize What we Have to Offer

Part of the benefit of administering our program through the local resource conservation districts is the access to technical expertise within our own organizations and our partners (USDA NRCS, FSA etc.). Collectively the Dixon Service Center has a great deal to offer our individual members to help with expertise in the following areas & more...

- Expertise on how to **SUCCESSFULLY** design, install & maintain vegetative practices (RCD staff has a great deal of practical experience in design, plant selection, site preparation, implementation and maintenance)
- Technical & Engineering Expertise on USDA NRCS Cost-Share Practices
- Practical experience & background in Solano County Agriculture, Farm & Drainage Facility Management
- Water Quality Research & Freshwater Biology Background
- Policy Background and Experience with organizing & managing coalitions

### Dixon/Solano Resource Conservation District Agricultural Water Quality Coalition

1170 N. Lincoln Street, Suite 110, Dixon, CA 95620 Phone (707) 678-1655

#### Dixon Resource Conservation District

John S. Currey, District Manager x105

Kelly Huff, Project Manager x311

Janice Beaman, Office Manager x108

#### Solano Resource Conservation District

Chris Rose, Executive Director x119

Andrea Mummert, Project Manager x112

Visit Our Websites [www.dixonrcd.org](http://www.dixonrcd.org) & [www.solanorcd.org](http://www.solanorcd.org)

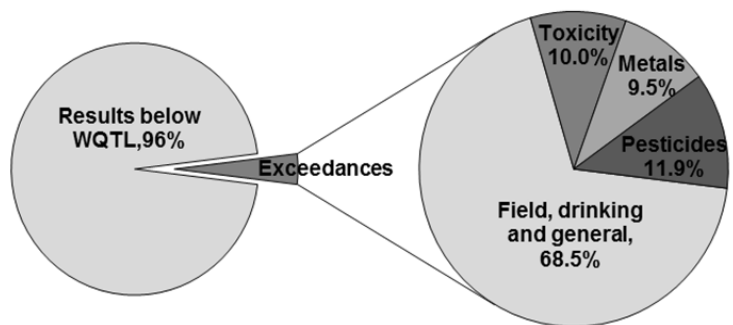
## SUCSESSES Under the Current Program!

Ten years ago the assumption seemed to be that the presence of irrigated agriculture meant there would be pesticides, fertilizers and various pollutants in the nearby waters. Our local monitoring results are showing overall that locally we do not have major, frequent issues related to irrigated agriculture. For the few high priority issues at our Dixon/ Solano sites, our members have made significant progress toward addressing them. As a result we are well on our way to completion of most of our high priority management plans.

### 2012-2013 HIGHLIGHTS \*detailed results on page 4

- 2/6 HIGH PRIORITY MANAGEMENT PLANS DEEMED COMPLETE BY REGIONAL BOARD
- NO MAJOR PESTICIDE EXCEEDANCES IN 2012-2013 MONITORING SEASON
- REDUCTION IN LEVEL OF SEDIMENT TOXICITY AND ASSOCIATED PYRETHROID PESTICIDE DETECTIONS AT Z-DRAIN SITE

### Sacramento Valley Wide Monitoring Results 2004-2011



96% of results were below Regional Board Water Quality Trigger Limits (WQTL). Results below WQTL indicate water bodies without significant impairment. Data compiled & charts developed by Central Valley Regional Board Staff

### STATUS OF DIXON/SOLANO COALITION MANAGEMENT PLANS

ULATIS CREEK @ BROWN ROAD		2012-2013 Monitoring Results
Malathion	COMPLETE	no detections
Diuron / Algae Toxicity	In Progress	no exceedances in 2010-2011 or 2012-2013
Nitrate as Nitrite	COMPLETE	one exceedance attributed to urban sources
Chlorpyrifos	In Progress	no exceedances (significant detection in March 2013)
Z-DRAIN @ HACKMAN ROAD		
Pyrethroids / Sediment Toxicity	In Progress	Sediment Toxicity & Associated Pyrethroids April & Aug
Field Parameter Exceedances at all sites (pH, Ecoli, dissolved oxygen, electrical conductivity)		Deemed Lower Priority, Awaiting Regional Board Direction

## WHAT KEY THINGS CAN YOU DO ON YOUR FARM?

**HANDOUTS Available!**  
with Product Names & Recommended Practices. Visit [WWW.DixonRCD.org](http://WWW.DixonRCD.org)

- **REDUCE SEDIMENT LEAVING FARMS**
- **USE GROUND VS. AERIAL APPLICATIONS**
- Spring/Summer Insecticide & Winter Herbicide Applications
- Share information on issues with your pest control advisors & applicators
- Use lower risk products & integrated pest management techniques (IPM)

- Keep applications away from waterways (including internal field ditches)
- Reduce &/or SLOW irrigation tailwater to drop out sediment & allow products to degrade
- Filter runoff through vegetation
- Use polyacrylamides (PAM) to drop sediment
- Keep winter cover (cover crops or winter crops or vegetation)

#### Groundwater Protection

- Well decommissioning
- Wellhead Protection
- Backflow Prevention

#### Nutrient Management

- Match fertilizer use to crop needs as exactly as possible
- Adjust fertilizer use for nitrogen available in source water & soil
- **Respond Quickly & Completely to any information requests from Coalition Staff.**

## WHO is Helping Out LOCALLY?

As we have worked through specific water quality issues locally we have continued to involve everyone we can to problem solve and come up with solutions that make sense. We have had a lot of support from many places like.....

Solano & Yolo County Agricultural Commissioners - Jim Allan and John Young and their staff provide pesticide use reports, advice on pesticide related issues, help us outreach to pesticide users and advisors and help us educate Regional Board Staff

Local Pest Control/Crop Advisors & Commercial Applicators - Local pest control companies and many individual advisors have participated in our outreach, helped the Coalition and individual farmers problem solve and install practices.

Supply & Drainage Facility Managers - Reclamation District 2068, Maine Prairie Water District, Solano Irrigation District and Solano County Water Agency provide input to our advisory committee and help us outreach to their members

Sacramento Valley Water Quality Coalition Staff & Consultants— SVWQC is our regional umbrella organization that allows our local Coalition of 115,000 acres to pool resources and share costs (like monitoring, reporting, legal) among 1.2 million irrigated acres.

Local and State Farm Bureaus - Farm Bureau has been instrumental in helping us to outreach to members, organize members to provide input to Regional Board and assistance from their State office staff & specialists.

Coalition for Urban and Rural Environmental Stewardship (CURES) -Parry Klassen, CURES Executive Director & Eastern San Joaquin Water Quality Coalition has shared advice & outreach materials and expertise as his Coalition is faced with meeting Regional Board requirements ahead of the rest of us.

### UC Cooperative Extension Research in Solano County

UCCE Farm Advisor, Rachael Long, has continued to provide assistance to our grower members, with advice, research specific to our issues, and education of Regional Board Staff. Rachael has also employed the help of numerous specialists within UC to get our members the best information possible. Her work on your behalf has included:

- Testing effectiveness of polyacrylamide (PAM) tablets in a local tomato field.
- Research and trials on alternative pesticide products
- Attending meetings with Regional Board Staff
- Testing alfalfa's ability to trap pesticides

#### A MESSAGE FROM SOLANO IRRIGATION DISTRICT

Agricultural water conservation programs are free and available to any farmer in Solano County. The programs are managed through a partnership with the Solano County Water Agency, Solano Irrigation District, Maine Prairie Water District, and Reclamation District 2068, and include

- Irrigation Evaluations.
- Irrigation scheduling.
- Soil moisture monitoring
- Weather data
- Pump efficiency testing
- assistance with implementing practices to improve drainage.
- workshops and newsletters

For information contact Paul Lum, Irrigation Specialist (707) 455-4024

### Water Quality Practices Receiving 2013 EQIP Cost Share Assistance from our Local NRCS Office in Dixon

Practice	Unit	Quantity	Cost
Cover Crop	Acres	250.1	\$68,975
Hedgerow Planting	Feet	918.0	\$3,826
Buried Drip in Row Crops	Acres	366.7	\$213,818
Orchard Sprinklers	Acres	561.7	\$481,124
Polyacrylamide (PAM) Application	Acres	95.6	\$2,139
Irrigation Water Management	Acres	754.3	\$19,746
Nutrient Management	Acres	935.9	\$2,955
Wildlife Structures	#	28.0	\$5,609
Reduced Tillage	Acres	2,695.5	\$72,861
Irrigation Pipeline	feet	1,850	\$9,192
Structure for Water Control	#	14.0	\$15,423
Riparian Vegetation	Acres	1.4	\$10,117

#### A MESSAGE FROM WENDY RASH, DISTRICT CONSERVATIONIST, USDA NRCS DIXON SERVICE CENTER

The collaborative effort between Dixon RCD, Solano RCD, and NRCS to apply for Bay-Delta Initiative funding really paid off. We have been able to work with twice as many growers this year on projects to improve water use efficiency, protect water quality, and enhance wildlife habitat.

THE SIGN-UP DEADLINE FOR NEW EQIP PROJECTS IS NOVEMBER 15TH OR MORE INFORMATION CALL (707) 678-1655 X 3



### WHAT MANAGEMENT PRACTICES ARE DIXON/SOLANO COALITION MEMBERS USING?

"Working with the Solano Resource Conservation District and members of the NRCS team in Dixon over the past three decades has been a highlight of our conservation restoration work at Sierra Orchards. Their hands on approach to water conservation has helped us implement projects large and small. The addition of our tail water pond and sediment trap has helped us to meet a "zero run off" policy whereby all water; both irrigation and rainfall is captured and filtered on our property." ~ **Craig McNamara, Sierra Orchards**



"We have been looking into ways to reduce sediment loss. Where it works we have installed temporary canvas checks in our tail ditches to slow drain water down and drop sediment out. In sensitive areas we have switched to lower risk pesticide products. In the long run I think we should look into projects that involve multiple landowners and growers and try to spread the costs. An example would be to use drainage facilities as detention systems."

~**Mark Holdener, Holdener Farms**

~ Photos provided by USDA NRCS & Solano Irrigation District ~



"We installed the grassed waterway in 2007 to filter runoff from our orchard and a row crop field, and slow down the velocity. There is very little or no erosion. We sloped the drain so that we can mow both sides instead of closing and re-making drains during the season." ~**Paul Lum, Peaceful Glen**

"Robben Ranch is using practices that have benefits to water quality including:

- ◆ Sediment basins/traps, checks to drop out sediment in tail ditches
- ◆ Installation of drip irrigation which eliminates tailwater and allows for ground application of pesticides
- ◆ sheep grazing of alfalfa fields to reduce over-wintering pests
- ◆ installation of hedgerows to encourage beneficial insect populations
- ◆ use of lower risk pesticide products near sensitive areas."

~ **Spencer Bei, Robben Ranch**

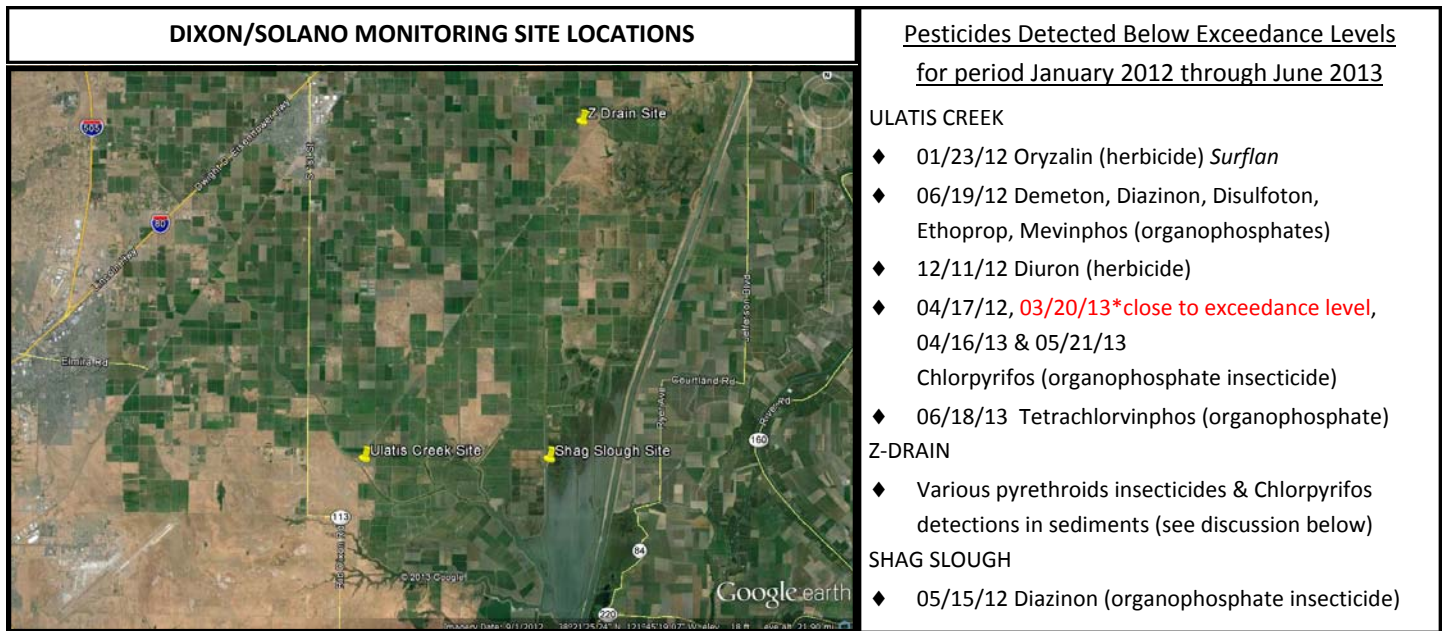


"We have been evaluating our overall operation to be proactive on erosion control, particularly near sensitive waterways. We are looking at various practices including application of polyacrylamides (PAM)"

~**David Viguie, Viguie Family Farms**



"We have installed 515 acres of buried drip over the last four years and plan to increase that by 500 acres over the next few years. We have been pleased with drip in alfalfa and have been experimenting with gopher control measures. I plan to try out polyacrylamides (PAM) for furrow irrigation next year as well." ~ **Rick Martinez, Triad Farms**



## JAN 2012—JUNE 2013 EXCEEDANCES ~Improvements in Results! ~

### ULATIS CREEK AT BROWN ROAD SITE

- ◇ Conductivity - 12/11/12, 01/22/13, 02/19/13, 04/16/12, 05/21/13, 06/18/13
- ◇ Ecoli - 03/20/13
- ◇ Nitrate - 11/13/12 (ATTRIBUTED TO URBAN SOURCES)

Other than continued exceedances for electrical conductivity (salts), there were very few exceedances at this site in 2012. For the first time since the beginning of our monitoring there were NO PESTICIDE or HERBICIDE or TOXICITY EXCEEDANCES at this site! There was a CHLORPYRIFOS (*trade names: Cobalt, Dursban, Govern, Lock-On, Lorsban, Warhawk, Nufos, Stallion*) detection, which was just below the exceedance level in March 2013 and we are still under a Management Plan for Chlorpyrifos here, so we will continue to work with growers on this issue.

### Z-DRAIN AT END OF HACKMAN ROAD SITE

- ◇ Conductivity - 02/19/13, 06/18/13
  - ◇ Sediment Toxicity & Related Pyrethroid Levels in Sediments - 04/16/13 (Bifenthrin - pyrethroid insecticide was likely cause)
- VISIT OUR WEBSITE FOR A LIST OF PRODUCT NAMES ASSOCIATED WITH PYRETHROIDS WE HAVE DETECTED**

The continued sediment toxicity at the Z-Drain site is definitely the most complicated issue we have as a Coalition. Growers in the watershed have spent considerable time and effort attempting to address it and we are conducting additional monitoring.

### SHAG SLOUGH AT LIBERTY ISLAND BRIDGE

- ◇ Conductivity - 02/19/13, 04/16/13

### REMINDER TO LANDOWNERS

**In many cases tenants are installing practices or implementing changes to protect water quality that have significant costs. These activities reduce liability for landowners & tenants. We would ask that you discuss the program and what your tenant is doing to address water quality issues, and structure leases in a way that encourages water quality protection practices.**

“In 2010 with the help of Solano RCD we planted a stretch of our Silvey-Joy Lateral drainage facility with native grasses and sedges on Casey Road to evaluate the feasibility and effectiveness. We have been pleased with the establishment of the native grasses and are continuing to monitor the ongoing maintenance needs and control of undesirable weed species.”

~John S. Currey, Dixon RCD

