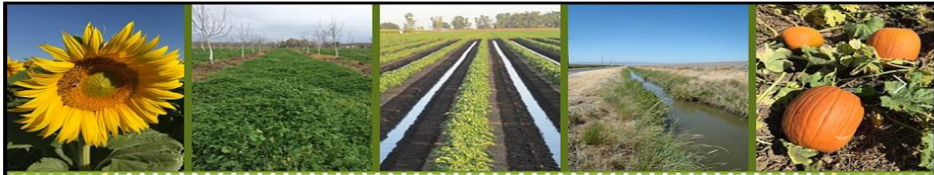


Dixon/Solano RCD Water Quality Coalition



Irrigated Lands Program

ALL-MEMBER'S ANNUAL MEETING

DIXON/SOLANO RCD WATER QUALITY COALITION

ONLINE ZOOM MEETING – NOVEMBER 8, 2021

THE MEETING WILL START AT 6PM

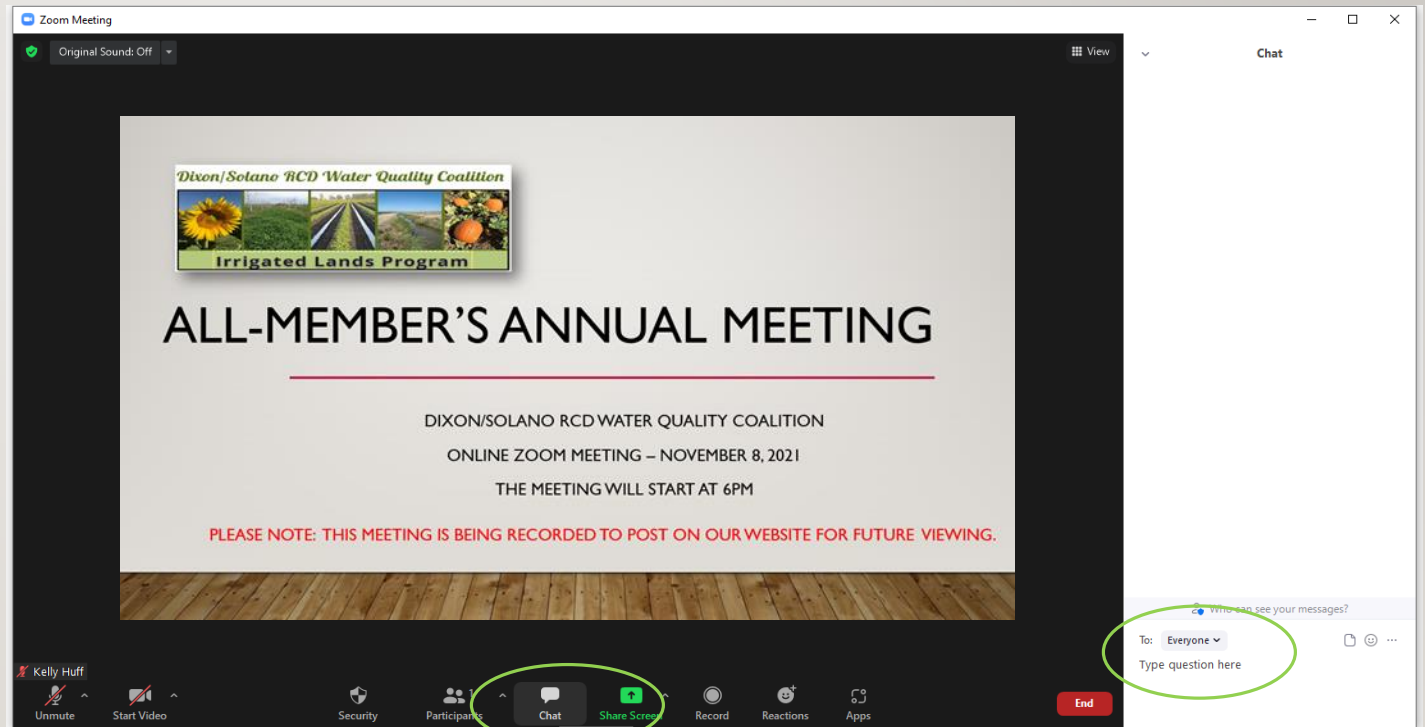
PLEASE NOTE: THIS MEETING IS BEING RECORDED TO POST ON OUR WEBSITE FOR FUTURE VIEWING.

GROUND RULES

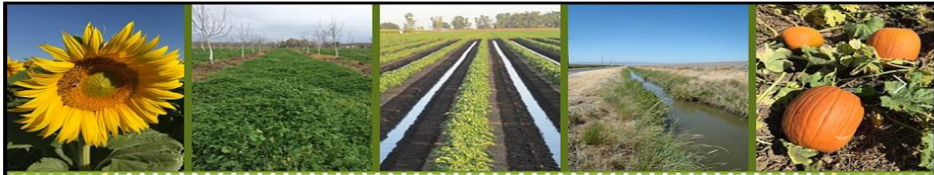
- All participants will be muted for the presentation, you will be notified when you can unmute for the Q & A portion of the event.
- Use the Chat Room to address any technical computer issues such as trouble unmuting, if you do not want Everyone to see your message, send it directly to Joanna Yac.
- The Chat Room can also be used for Q & A at the end of the presentation.
 - Send to Everyone -Your question will be public
 - Send directly to Kelly Huff or Martha McKeen - Your question will be seen only by that person

GROUND RULES

- If you are having difficulties with or have questions, please contact Kelly at (707) 849-0907
- Or Martha at (530) 867-6289



Dixon/Solano RCD Water Quality Coalition



Irrigated Lands Program

ALL-MEMBER'S ANNUAL MEETING

DIXON/SOLANO RCD WATER QUALITY COALITION

ONLINE ZOOM MEETING

NOVEMBER 8, 2021 – 6PM TO 7PM

PLEASE NOTE: THIS MEETING IS BEING RECORDED TO POST ON OUR WEBSITE FOR FUTURE VIEWING.

AGENDA

- GSP – SOLANO GROUNDWATER SUSTAINABILITY PLAN
 - Chris Lee, Solano County Water Agency
 - Q & A
- COALITION – Kelly Huff, Dixon RCD
 - FINANCES
 - GROUND WATER
 - SURFACE WATER
- MEMBERSHIP & PROGRAM UPDATE – Martha McKeen, Dixon RCD
- QUESTIONS & ANSWERS – Kelly and Martha



GROUNDWATER SUSTAINABILITY PLAN



Solano Subbasin Groundwater Sustainability Plan Overview

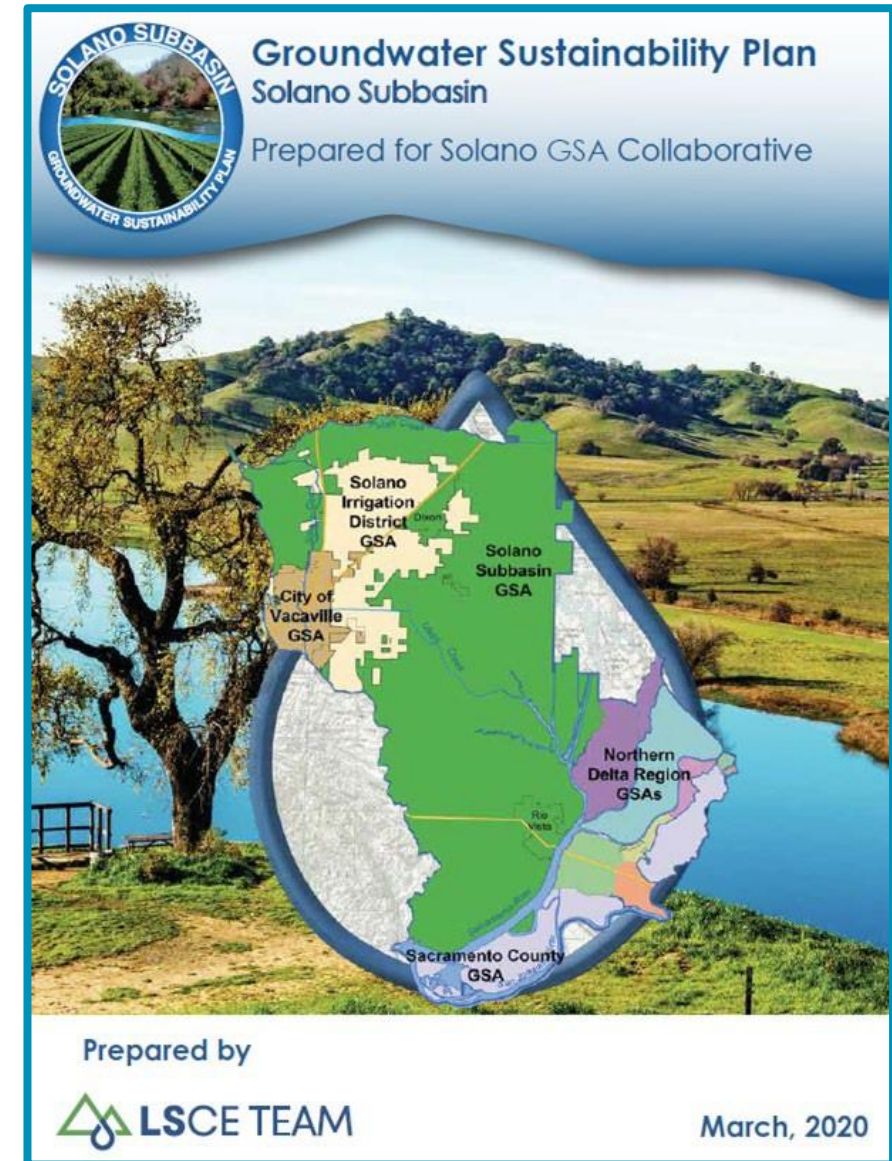
Dixon/Solano RCD
Water Quality Coalition
November 8, 2021

Chris Lee
Solano County Water Agency



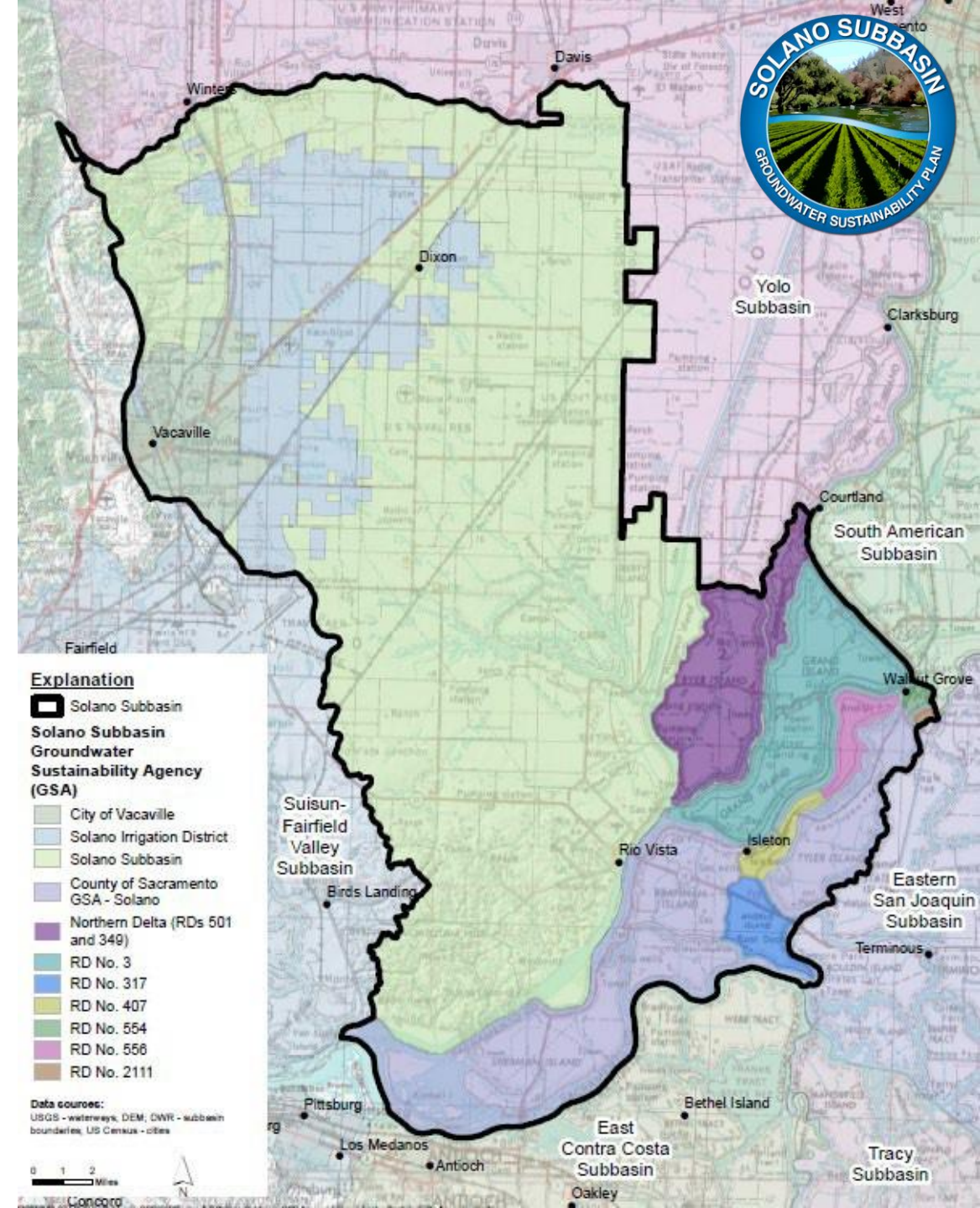
Key Elements of the GSP

- Section 1-Introduction
- Section 2-Plan Area
- Section 3-Basin Setting
- Section 4-Water Supplies
- Section 5-Water Budget
- Section 6-Sustainability Goal
- Section 7-Monitoring & Reporting
- Section 8-Projects & Management Actions
- Section 9-Plan Implementation



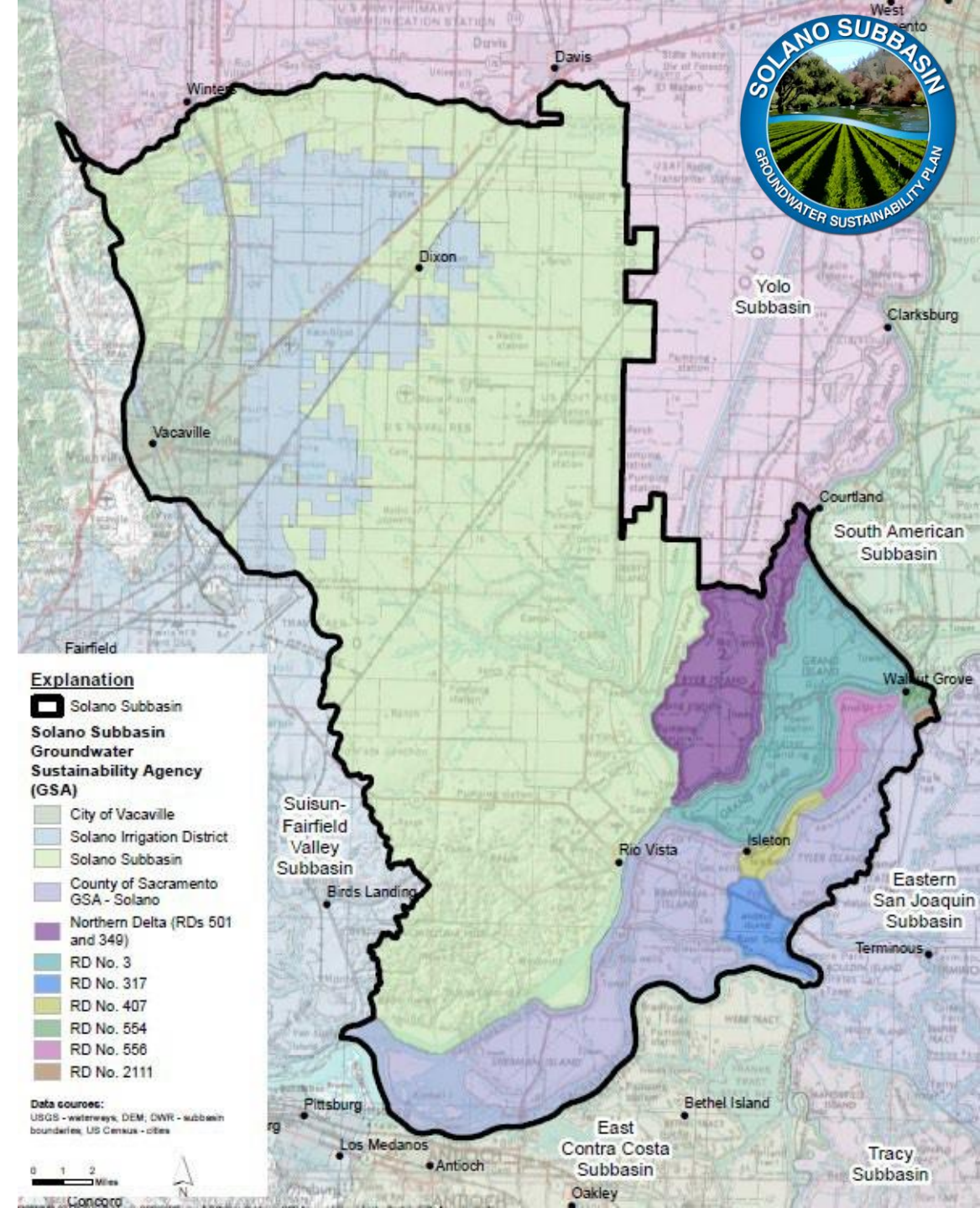
Solano Subbasin

- Groundwater Sustainability Plan (Plan Area)



Solano Collaborative

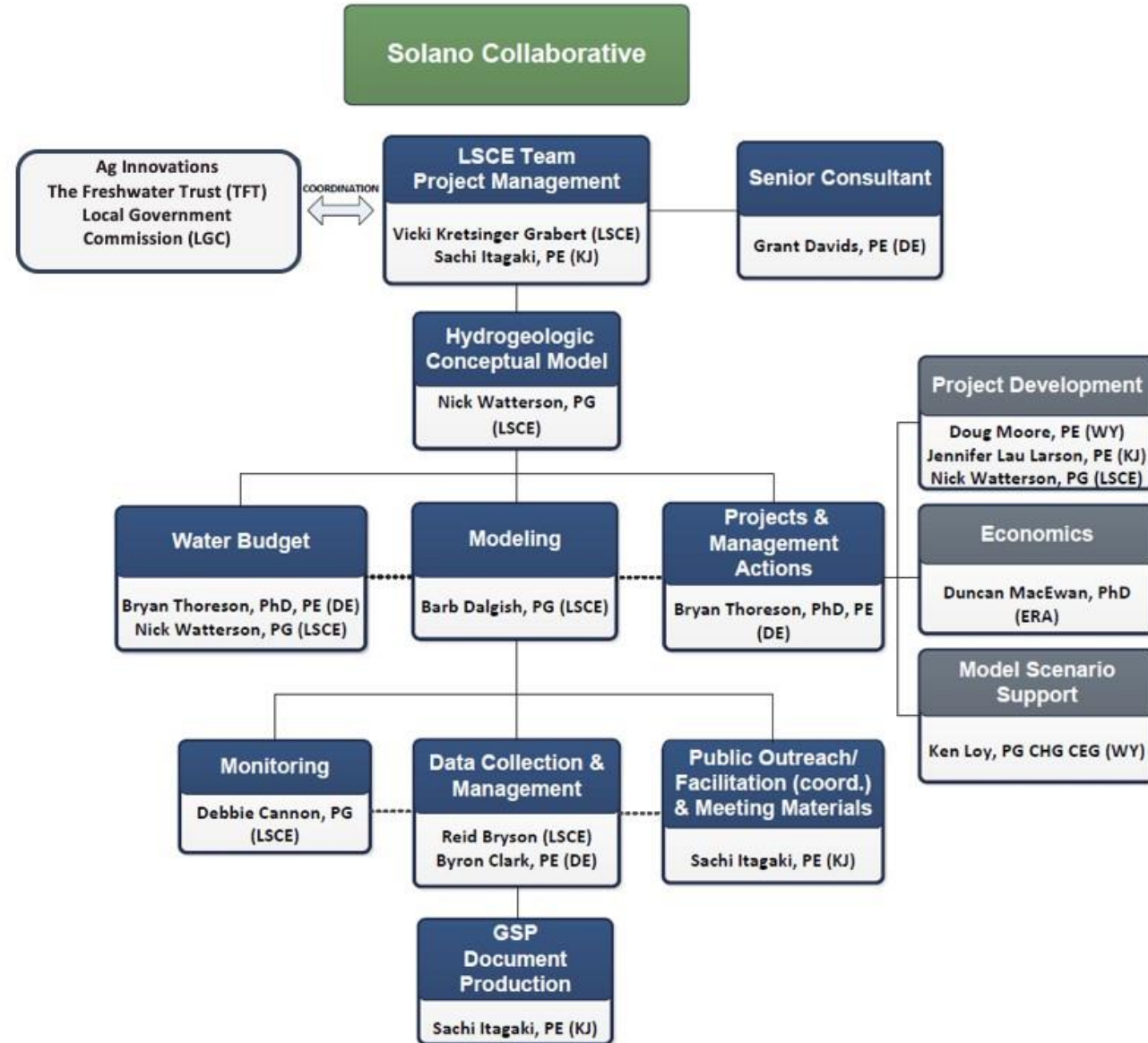
- City of Vacaville GSA
- Northern Delta GSA
- Sacramento County GSA
- Solano GSA
- Solano Irrigation District GSA



Technical Team Organization



- **Coordination with**
 - Solano Collaborative
 - Ag Innovations
 - The Freshwater Trust (TFT)
 - Local Government Commission (LGC)
- **Team Roles**
 - **LSCE**: GSP all tasks/
 - **KJ**: Meeting coordination; document production
 - **DE**: Water budget; projects & management actions
 - **WY**: Support projects & management actions
 - **ERA**: Economic/feasibility analyses



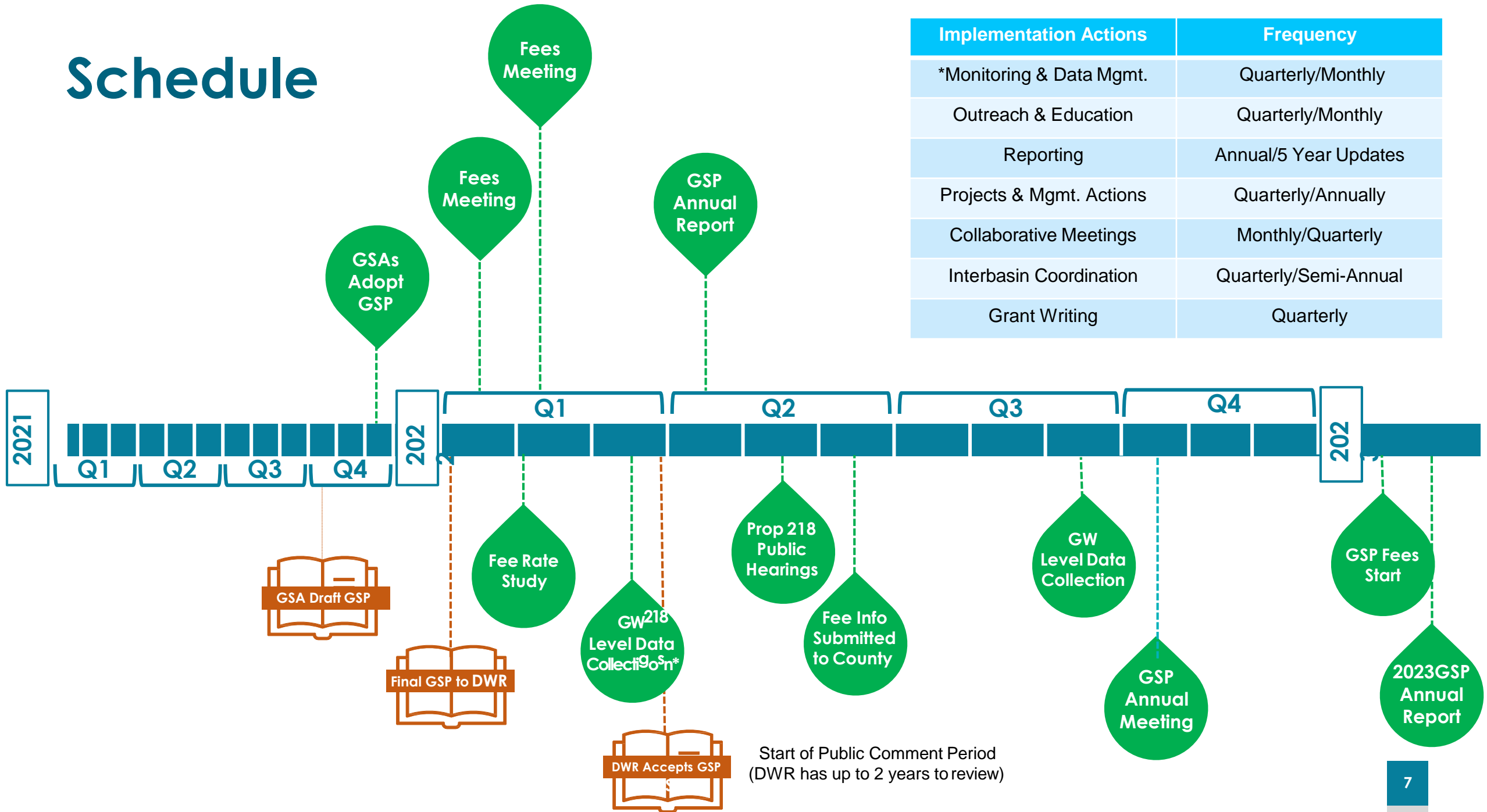


GSP Funding

- GSP Development
 - Proposition 1/Proposition 68
 - Local Agency Funding
 - DWR Facilitation Services Support/Technical Services Support
- GSP Implementation
 - Grants/State Funding
 - Local Fees

Schedule

Implementation Actions	Frequency
*Monitoring & Data Mgmt.	Quarterly/Monthly
Outreach & Education	Quarterly/Monthly
Reporting	Annual/5 Year Updates
Projects & Mgmt. Actions	Quarterly/Annually
Collaborative Meetings	Monthly/Quarterly
Interbasin Coordination	Quarterly/Semi-Annual
Grant Writing	Quarterly



Comment on the GSP

Comment on the Draft GSP

- **November 15** - Draft GSP Comment Deadline
- Review Draft GSP and submit comments at <https://www.solanogsp.com>

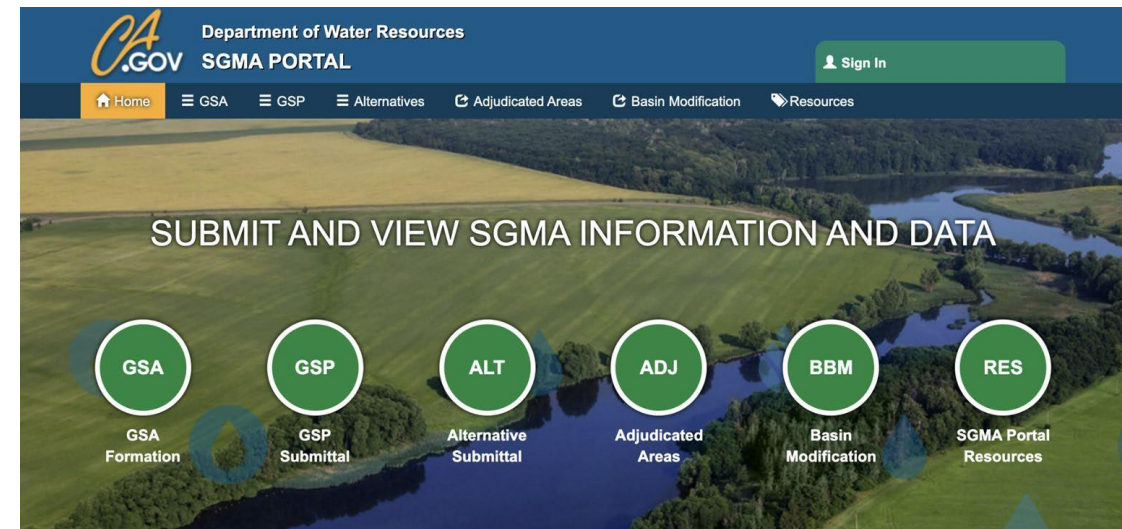
Comment on the Final Submitted GSP

- GSP will be posted on DWR SGMA Portal for comment within 20 days of submission for 60 day comment period
- Visit DWR SGMA Portal to comment on Final GSP <https://sgma.water.ca.gov/portal/gsp/all>

The Full Draft Groundwater Sustainability Plan (GSP) is Posted - Provide Your Comments

Comments can be submitted until November 15, 2021.

[Click Here to Comment on the Draft GSP](#)



Stakeholder Engagement Get Connected

- Summer/Fall Town Hall Meetings
- Community Advisory Committee
- GSA Board Meetings
- Review/Comment on GSP
- www.solanogsp.com
- www.groundwaterguide.com



Luhdorff & Scalmanini

Sacramento County GSA

Citizens Advisory Committee

Dixon Resource Conservation District

Kennedy Jenks

The Freshwater Trust

Department of Water Resources

Solano Irrigation District GSA

Solano GSA

ERA Economics

West Yost

David's Engineering

Solano Subbasin Stakeholders

Northern Delta GSA

Ag Innovations

Propositions 1 & 68

City of Vacaville GSA

Local Government Commission





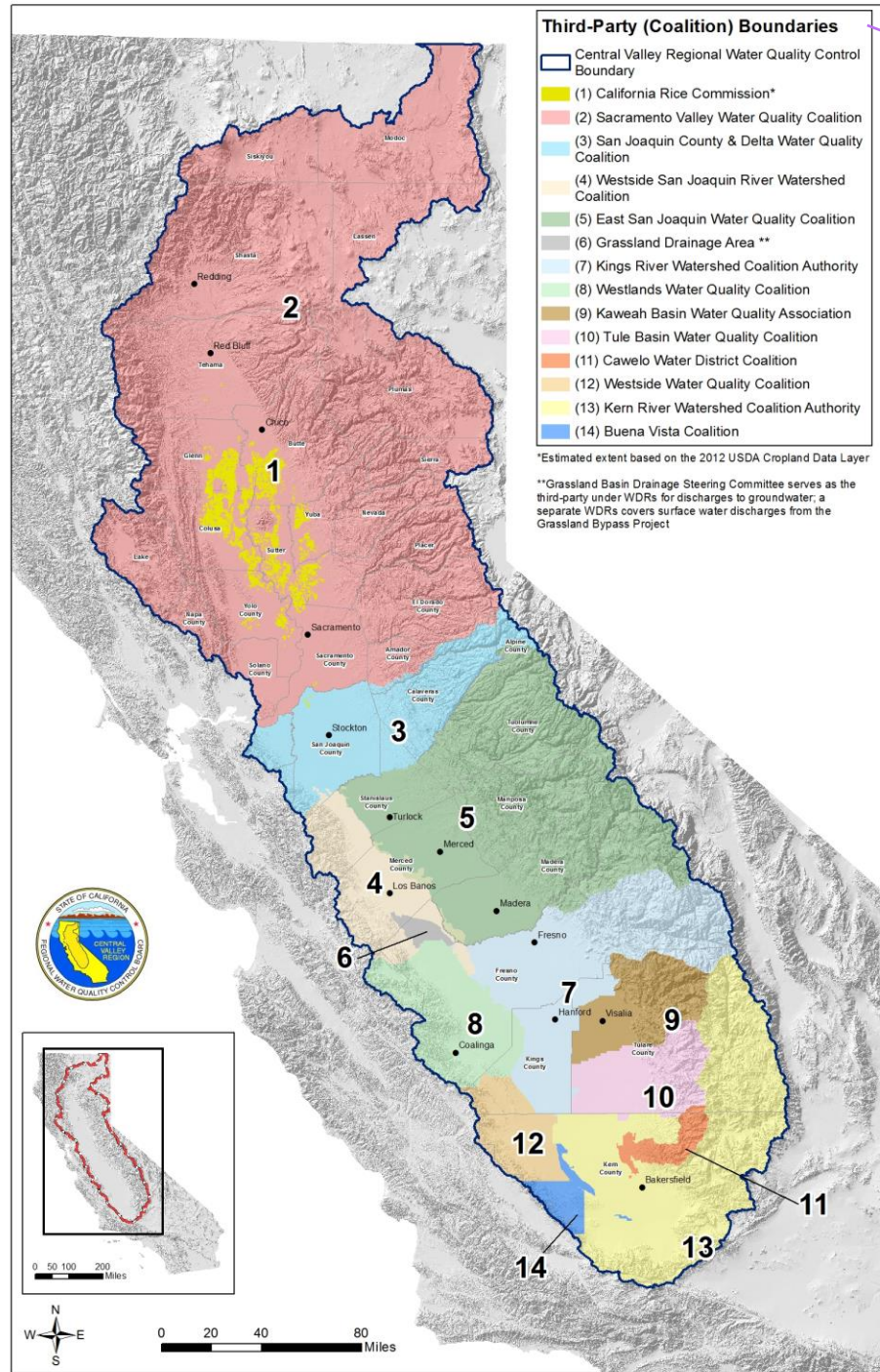
THANK YOU



ANY QUESTIONS?

DIXON/SOLANO SUBWATERSHED (COALITION)





Third-Party (Coalition) Boundaries

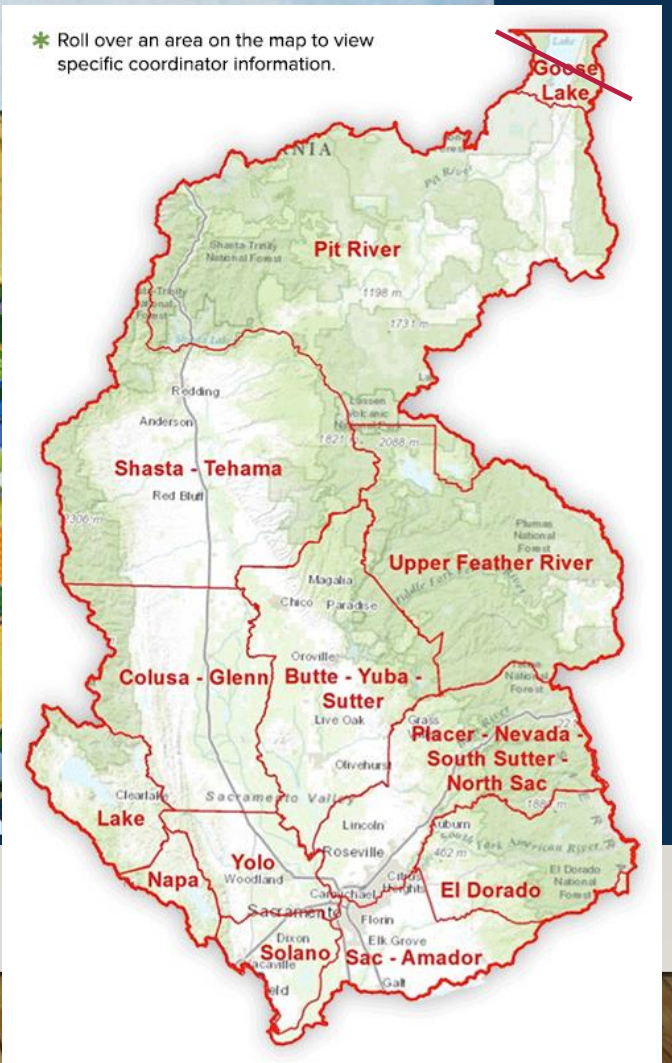
- Central Valley Regional Water Quality Control Boundary
- (1) California Rice Commission*
- (2) Sacramento Valley Water Quality Coalition
- (3) San Joaquin County & Delta Water Quality Coalition
- (4) Westside San Joaquin River Watershed Coalition
- (5) East San Joaquin Water Quality Coalition
- (6) Grassland Drainage Area **
- (7) Kings River Watershed Coalition Authority
- (8) Westlands Water Quality Coalition
- (9) Kaweah Basin Water Quality Association
- (10) Tule Basin Water Quality Coalition
- (11) Cawelo Water District Coalition
- (12) Westside Water Quality Coalition
- (13) Kern River Watershed Coalition Authority
- (14) Buena Vista Coalition

Sacramento Valley Water Quality Coalition

[Home](#)



To see th



SACRAMENTO VALLEY WATER QUALITY COALITION (SVWQC)

- **Goose Lake Exemption** – On August 13, 2021, the Central Valley Regional Water Quality Control Board unanimously approved an exemption for the Goose Lake Area of the Sacramento Valley Coalition from the Irrigated Lands Regulatory Program (ILRP).
- **Wetland Exemption** – On October 15, 2021, The Regional Board approved the exemption of exclusively managed wetland from the General Orders of the ILRP – Irrigated Land Regulatory Program.
- **Future Exemptions?** For upper subwatersheds with irrigated pasture acres that do not apply pesticides or fertilizers.
- **Cost-Savings Initiatives** – regional coordination, monitoring & reporting reductions, changes to State Fee calculations.

FINANCES



FISCAL YEAR 2021 RECAP

- FY 2021 actual ending fund balance June 30, 2021 was \$261,191 (anticipated at \$124,616.83)

Reasons why?

- Large carryover from 2019/2020 SVWQC budget of \$70,870 (\$50,190 Reporting Requirements, \$8,370 Groundwater, \$5,930 Surface Water and \$6,380 NCWA Program Costs) and additional member fees.
- Zero cost for workshops/travel and mileage due to COVID-19
- Groundwater & Surface Water compliance costs were less than expected

Dixon/Solano RCD Water Quality Coalition Actual July 2020 - June 2021 Finances

Total Income 07/2020— 06/2021	\$ 473,328.17
Membership Fees (\$3.75/acre)	\$ 470,748.87
Interest	\$ 2,579.30
Total Expenses 07/2020—06/2021	\$ 393,567.79
RCD Staff	\$ 130,608.25
RCD Direct Costs	\$ 3,770.14
Surface Water Monitoring	\$ 72,422.08
Groundwater/Reporting Requirements	\$ 26,891.57
SVWQC Fees	\$ 22,462.65
State Board Fees (\$1.12 per irrig. acre)	\$ 137,413.10
Fund Balance 06/30/21	\$ 261,191.72

FISCAL YEAR 2022 PLANNING

Dixon/Solano RCD Water Quality Coalition Projected July 2021 - June 2022 Finances

<i>Budgeted Income 07/2021—06/2022</i>	\$ 455,325.00
Membership Fees (\$3.75/acre)	\$ 452,325.00
Interest	\$ 3,000.00
<i>Budgeted Expenses 07/2021—06/2022</i>	\$ 527,816.00
RCD Staff	\$ 143,473.00
RCD Direct Costs	\$ 13,630.00
Surface Water Monitoring	\$ 120,000.00
Groundwater/Reporting Requirements	\$ 80,000.00
SVWQC Fees	\$ 32,000.00
State Board Fees (\$1.15 per irrig. acre)	\$ 138,713.00
<i>Fund Balance 06/2022 (projected)</i>	\$ 188,700.72

We estimate the Coalition budget in June – SVWQC does not complete their budget until November

- Projected ending balance for June 30, 2022 is \$188,700 (-\$72,490 net position)

Updates Since June -

- State Boards fees increased 14 cents per acre more than we anticipated. (\$1.29/acre)
- Further decreases in overall irrigated acreage.

GROUNDWATER



GROUNDWATER REQUIREMENTS

NITRATES

- MANAGEMENT PRACTICES EFFECTIVENESS PROGRAM (MPEP)
- IDENTIFICATION OF “OUTLIER FIELDS”
- GW PROTECTION FORMULAS, VALUES & TARGETS
- TREND MONITORING
- CV-SALTS – NITROGEN MANAGEMENT ZONES

GROUNDWATER REQUIREMENTS

SALINITY

- THRESHOLDS WERE SET TO PROTECT AGRICULTURAL USES
- SACRAMENTO VALLEY ALTERNATIVE APPROACH
- CENTRAL VALLEY PRIORITIZATION & OPTIMIZATION STUDY
- SOLANO AND YOLO MAY HAVE DIFFERENT REQUIREMENTS

DRINKING WATER WELLS MONITORING

- Coming in the January 2022, all parcels enrolled in the Coalition with drinking water well will have to test the water for nitrates.
- Notification of the requirements will come directly to you from the RB in January.
- We will sponsor an outreach event in January/February to help answer any questions you may have.
- For more information, visit:

https://www.waterboards.ca.gov/centralvalley/water_issues/irrigated_lands/drinking_water/





CALIFORNIA REGIONAL WATER QUALITY CONTROL BOARD
CENTRAL VALLEY REGION
IRRIGATED LANDS REGULATORY PROGRAM
DRINKING WATER WELL MEMBER INFORMATION

Complete entire form if you have a drinking water well on an enrolled Assessor's Parcel Number (APN) and submit it with your well samples to an Environmental Laboratory Accreditation Program laboratory for required data entry into the State's GeoTracker database.

1. Coalition Member Information

(Personal information will not be available to the public, only APN and well sample data will be available to view through the GeoTracker database) – *Note: fields 1a through 1d, 1f and 1e are required to be filled out.

- | | |
|--------------------------------|---|
| 1a. Coalition Name*: | 1e. Farm Name: |
| 1b. Coalition Member ID #*: | 1f. Member's Phone*: |
| 1c. Member's Name*: | 1g. Member's Email*: |
| 1d. Member's Mailing Address*: | 1h. Property Address (if different from mailing address): |
- 1i. Is the coalition member also the landowner: ☐ YES (if Yes, skip boxes 2a-2d) ☐ NO
- 1j. Is the coalition member (including family) the only consumer of the drinking water?
☐ YES ☐ NO (if no, notification to all consumers and the Central Valley Water Board is required if nitrate exceedance is identified)

2. Landowner Information

(Fill out if coalition member is not the landowner)

- | | |
|----------------------------------|------------------------|
| 2a. Landowner's Name: | 2c. Landowner's Phone: |
| 2b. Landowner's Mailing Address: | 2d. Landowner's Email: |

List of Certified Environmental Laboratory Accreditation Program (ELAP) Labs for testing nitrate + nitrite nitrogen

Please note that any laboratory on this list can be used regardless of location.

BAKERSFIELD

BSK Associates* (drop off location)
700 22nd Street
Bakersfield, CA 93301

Phone: (800) 669-3201
www.bskassociates.com

* Courier Service Available to Fresno
Laboratory location. Please call ahead
for containers and instructions.

Zalco Laboratories, Inc.
4309 Armour Avenue
Bakersfield, CA 93308

Phone: (661) 395-0539
zalcolabs.com

CHICO

Basic Laboratory, Inc.
3860 Morrow Lane
Chico, CA 95928

Phone: (530) 894-8966
www.basiclab.com

**Fruit Growers Laboratory, Inc./
FGL Environmental**
563 East Lindo Avenue
Chico, CA 95926

Phone: (530) 343-5818
www.fglinc.com

CLOVIS

APPL, Inc.
908 North Temperance Avenue
Clovis, CA 93611

Phone: (559) 275-2175
www.applinc.com

DAVIS

Dellavalle Laboratory, Inc.*
(drop off location)
502 Mace Boulevard, Suite 2B
Davis, CA 95618

Phone: (800) 228-9896
dellavallelab.com

* Courier Service Available to Fresno
Laboratory location (Monday through
Wednesday, 8am-3pm). Please call
ahead for containers and instructions.

ELK GROVE

Alpha Analytical Laboratories, Inc.
9090 Union Park Way
Elk Grove, CA 95624

Phone: (916) 686-5190
www.alpha-labs.com

FRESNO

Dellavalle Laboratory, Inc.
1910 West McKinley Avenue
Fresno, CA 93728

Phone: (559) 233-6129
dellavallelab.com

Moore Twining Associates, Inc.
2527 Fresno Street
Fresno, CA 93721

Phone: (559) 268-7021
www.mooretwining.com

BSK Associates
1414 Stanislaus Street
Fresno, CA 93706

Phone: (559) 497-2888
www.bskassociates.com





Do Not Drink Your Water

Use Only Bottled Water Until Further Notice

Failure to follow this advisory could result in serious illness

Test Result: _____ mg/L

Nitrate in your well was found to exceed the drinking water standard of 10 mg/L established for safe drinking water.



- **Pregnant women are at increased risk** for potential health effects and should not drink water with high levels of nitrate. Drinking water with high nitrate levels may also cause serious complications in pregnancy.
- **Do not give the water to infants.** Infant formula and other edible products should be prepared with bottled water or other water with low levels of nitrate. Infants are at increased risk to become seriously ill or even death from consumption of high levels of nitrate.
- **Do not boil your water.** Boiling your water may increase nitrate levels

This notification was provided by:

APN _____

County _____

Coalition _____

Member ID _____

Name (of Landowner/Member) _____

Contact Phone # _____

Signature _____

Date _____

- ☐ No one drinks or cooks with this well water.
- ☐ Notification has been provided to the user(s) or appropriate landowner(s).
- ☐ Replacement water has been provided to the user(s).

Please submit a signed copy of this notification to the **Central Valley Water Board:**

Sacramento Office:

11020 Sun Center Dr., #200

Rancho Cordova, CA 95670

☎ (916) 464-4611

Email: irrlands@waterboards.ca.gov

Fresno Office:

1685 "E" Street

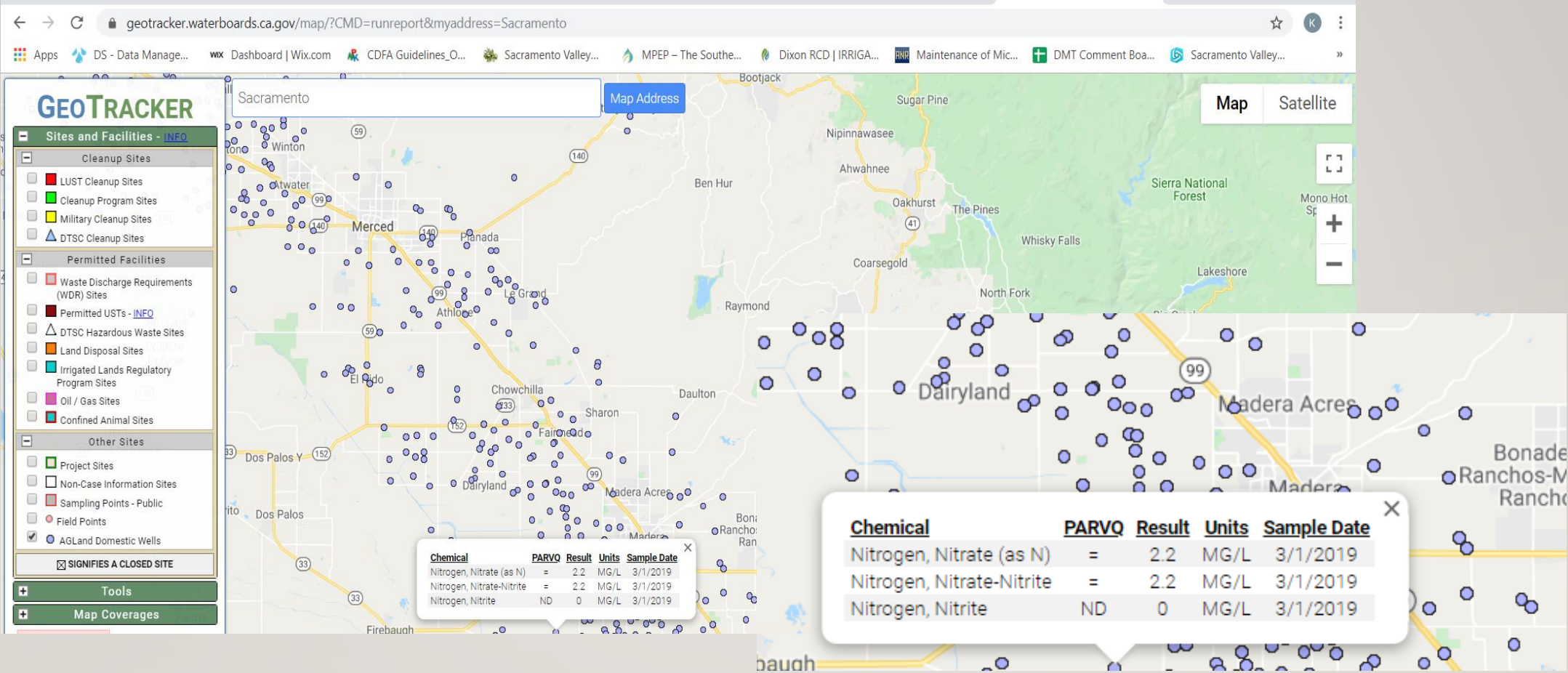
Fresno, CA 93706

☎ (559) 488-4396

Email: ilrpinfo@waterboards.ca.gov



STATE GEOTRACKER WEBSITE



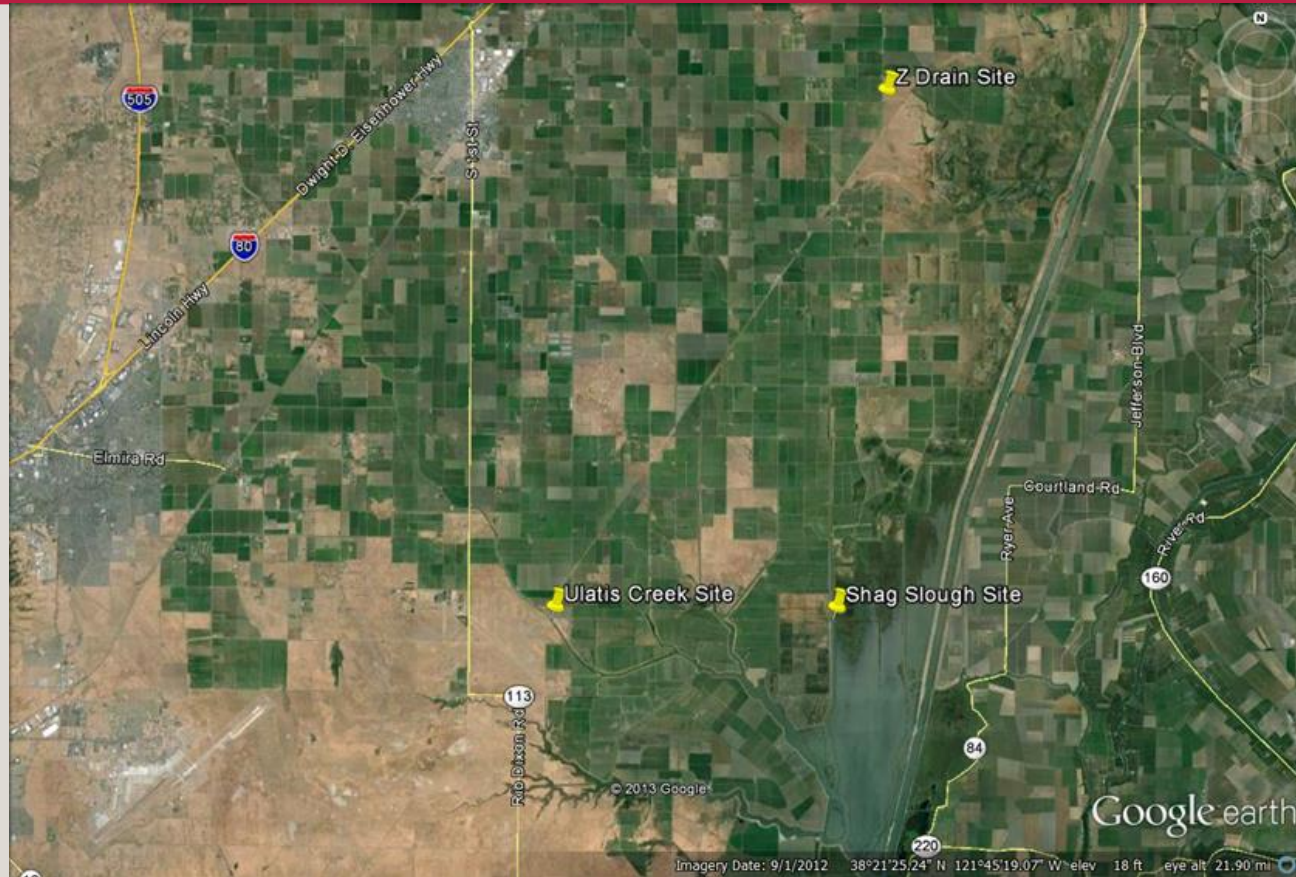
GROUNDWATER PROTECTION

- How do the members of the Coalition protect groundwater?
 - Wells: Wellhead protection – (Ground sloped away from wellhead, standing water avoided around wellhead, good housekeeping, air gap for non-pressurized systems, backflow preventive/check valve and cement pads)
 - Proper Well Abandonment – Destroy by certified professional
 - Decommissioning Wells – NRCS offers assistance.
 - Nitrogen: Planning and proper use of nitrogen on fields (use your credits)
- Irrigation: Accounting for the nitrates in water when applying fertilizer. Nitrates move with water, so improved irrigation efficiency and management reduces nitrate movement into groundwater. Solano RCD is offering assistance.

SURFACE WATER



WATER QUALITY MONITORING SITES



WATER QUALITY MONITORING SITES

Ulatis Creek at Brown Road

Monitoring Site

September 23, 2021

Water Column Testing

*Additional Sites: Shag Slough at
Liberty Island Bridge and Z-
Drain



WATER QUALITY MONITORING



WATER QUALITY MONITORING



WATER QUALITY MONITORING

Update since last year...

- On June 23, 2021, there was a water column toxicity exceedances at the Ulati Creek monitoring site, where we have an active management plan for sediment toxicity.
- Most likely pathways are application drift and attachment to sediment run-off
- Detailed information about the management plan is available on our website at: dixonrca.org/ulatis-sediment-toxicity
- Testing methods for pyrethroid pesticides have changed per Regional Board requirements so there is an increased chance of future exceedances related to pyrethroids.

SURFACE WATER MPIR

Management Plan Implementation Report - Coming in Early 2022

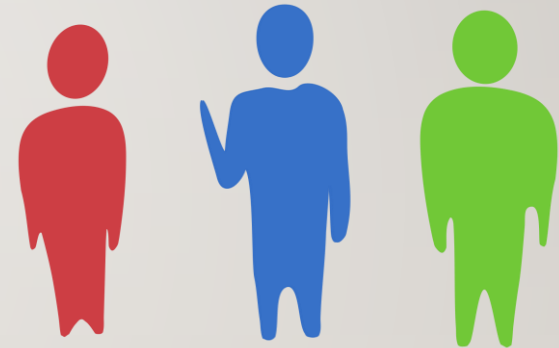
- Required for all pesticide users because of the exceedances
- Member's names will be collected from the PUR-Pesticide Use Report (CA Department of Pesticides)
- It is a 13 question survey about irrigation and sediment run-off practices
- It will be separate from the DMT-data management tool-online reporting
 - Could either be a different online survey, excel spreadsheet or paper copy

MEMBERSHIP & PROGRAM UPDATE



STAFF AT DIXON RCD

- Kelly Huff is the District Manager
- Martha McKeen is the Program Coordinator
- Brook Rosenberger has moved to Montana
- Joanna Yac is the new Office Manager



- We continue to partner with the staff of Solano RCD throughout the year and during the farm reporting season.

BOARD MEMBERS

DIXON RCD

- David Viguie
- Sam Beukelman
- Spencer Bei
- Eric Schene
- Daniel Jones
- Jim Campbell, Associate
- Leo Soukeris, Associate

SOLANO RCD

- Kurt Balasek
- Paul Lum
- Darrell Hill
- John Knowles
- Randi Thompson
- Terry Riddle
- Kathie Stutz
- Glenda Riddle, Associate

ADVISORY COMMITTEE

- Bruce Brazelton
- Kurt Balasek
- Cork McIsaac – Rep. for Sac Valley
- Paul Lum
- Rick Martinez
- Spencer Bei
- David Viguie

To attend a board meeting, look for the agendas at: dixonrcd.org or solanorcd.org

FINANCIAL OBJECTIVES OF THE GOVERNING BOARD MEMBERS

- Minimizing fluctuations of per acres member fees from year-to-year
- Strive to avoid multiple year billings.
 - This can mean that some years we can carry a significant ending fund balance
- Advisory Committee meets at least annually
- Remember members are always welcome to any meeting
 - dixonrcd.org/advisory-committee

INVOICING/BILLING

- FY2020 – 88% on-time payments
- FY2021 – 93% on-time payments

Why the comparison?

- Better on-time percentage means less staff time
- Helps keep the cost down for all members

Overall:

- We collected 100% of our invoices
- No memberships were revoked due to non-payment!

INVOICING FISCAL YEAR 2022

- Member Fees for the program are \$3.75 per irrigated acre...SAME with NO CHANGE from last year.
- Invoices sent on October 1, 2021
- DUE DATE: Invoices due December 1st
- Currently we are at 47% PAID



POLICY REMINDERS & UPDATES

- Reminder farm reporting is due on February 15th. After that date, late fees apply. (Policy: 20% of all fees owed or \$100, whichever is more.)
- There was 36 late reporting fee invoices last year! All members are required to report even if the land is fallow, the crop failed or zero nitrogen was applied.
- If farm reporting is not received or is incomplete by July 1st, you are placed on an enforcement list that the Coalition is required to give to the Regional Board.

MEMBERSHIP TOTALS

- 672 - Members enrolled
- 1,517 - Parcels enrolled
- 116,000 - Acres enrolled
 - Acreage has decreased by 4000+ acres due to fallow, non-irrigated crops, habitat development, wetland exemption, parcels in transition and from sold parcels where new owners have not yet reenrolled.



FARM REPORTING CROP YEAR 2020

FARM REPORTING CROP YEAR 2020

- 99% of growers completed their Overall Farm Reporting
- Including: Nitrogen Management Plan Summary Report, farm evaluation and their education activity requirement
- That mean only three members did not complete their farm reporting.
- Now let's see what's up for 2021 crop year reporting...



FARM REPORTING CROP YEAR 2021

- All members are required to report the following in the DMT:
- Verify **ACCOUNT CONTACT**
- Verify **PARCELS**
- Verify **CROPPING** and irrigated acreage
- **INMP SR** – Irrigation Management Plan Summary Report (Nitrogen & Yield Actuals)
- Enter **OUTREACH & TRAINING**
- Enter **GW MPIR** – Groundwater Management Plan Implementation Report (**New**)
- **SECP PLAN** – Acknowledgment page



FARM REPORTING - GW MPIR

- Why? Because in the Order, we are required to have a Management Plan to protect groundwater quality
- The INMP SR does not address irrigation uniformity and irrigation efficiency can heavily influence nitrogen leaching potential.
- Nitrogen leaches with water, rainfall can't be controlled...irrigation can be controlled and managed.
- What? A report with about 10 questions per **MU** specific to irrigation uniformity and nitrogen fertigation management practices
- Data is a baseline for this year, therefore we'll be able to see improvement as growers implement new practices in the future.

FARM REPORTING - GW MPIR

DSJDMT Dixon/Solano RCD Water Quality Coalition - Data Management Tool

ABOUT MY INFO LOGOUT

MEMBER DATA INMP SUMMARY REPORT **MPIR** SECP PLAN MAPS AND REPORTS INMP WORKSHEET

1 Irrigation Wells 2 **Irrigation Uniformity** 3 Crop Fertility Plan

PREVIOUS NEXT

Irrigation Uniformity

Update Current Year Irrigation Uniformity Management Units

- Review and identify the Irrigation Uniformity Management Units associated with the selected account here.
- The data items that can be modified are represented in blue.

Note: a Irrigation Uniformity Management Unit is any field or group of fields with the same ... practices for

Map	County	APN	Field Id	Irrigated Acres	Crop	2021 Irrigation Uniformity Management Unit	Irrigation Uniformity Completed?
	Solano		SS AA-1	39.09	ALFALFA - HAY		Not Completed
	Solano		SS AA-2	40.00	ALFALFA - HAY		Not Completed

Select a Management Unit for Irrigation Uniformity Reporting

- Answer the questions for each management unit associated with the selected account here.
- Once the questions have been answered, click the 'Save' button.
- Once complete, the 'Irrigation Uniformity Completed' column will change to 'Completed' in the 'Update Current Management Units' table and a green check mark will appear for that management unit in this table.
- Note: The answers will not be saved if you advance to another management unit without clicking 'Save.'**

Select each Management Unit and fill the form that appears below

Unit: 1 Unit: 2

FARM REPORTING - GW MPIR

Management Unit ID = 1 - Irrigation Uniformity: Field Specific Evaluation

How often do you complete an irrigation distribution uniformity evaluation to identify maintenance needs? (select 1)

- ☐ At least once every 3 years
- ☐ Every 3 to 5 years
- ☐ Never – unknown distribution uniformity

How often do you assess water quality for changes in chemistry or biological materials (bacteria, fungi, algae and sediment)? (select 1)

- ☐ Every 1 to 3 years, or when water supply is known to have changed
- ☐ Every 3 to 5 years
- ☐ Never - Unknown water quality

How often do you select and inject acids, chlorine, or polymers for irrigation system maintenance? (select 1)

- ☐ As often as necessary, based on known water quality changes
- ☐ At least once each irrigation season
- ☐ Never

How often do you clean filters and flush hose lines? (select 1)

- ☐ At least every other month during irrigation season
- ☐ At least once each season
- ☐ Never, or less than once each season

How often do you do drive through checks on your irrigation system to scout for system breaks and needed plumbing repairs? (select 1)

- ☐ At each start-up
- ☐ Every 1-4 weeks
- ☐ Seldom (less often than every 4 weeks)

How often do you use ET_o, ET_c, soil, or plant water status monitoring to guide irrigation scheduling? (select 1)

- ☐ Regularly (several times throughout the growing season)
- ☐ Sometimes (on some crops or at some points during the growing season)
- ☐ Never

Flood irrigation efficiency practices (select all that apply)

- ☐ NA - Do not flood or furrow irrigate
- ☐ Grade for constant slope or taper slope for bottom 1/3rd of field
- ☐ Short furrow or check length (under 1/4 mile)
- ☐ The acres, flow rate, and duration are consistent for each set across a field
- ☐ Pull torpedoes behind cultivator to smooth furrows (row crops)
- ☐ Short furrow or check length (under 1/4 mile)
- ☐ Alternate furrow irrigation
- ☐ Water advances to end of furrow in about half (or less) of the total irrigation time
- ☐ Cutback flow in furrow or border-check irrigation when water reaches end (row crops)
- ☐ Collect and reuse tailwater run-off
- ☐ Use polyacrylamide (PAM) water additives to reduce sediment in water

INMP WORKSHEET

EXPECTED/PLANNED

Fill out the entire worksheet in the Spring with the exception of the Actual column (B), certify if parcel is in a high vulnerability area for N in the groundwater

If you do not recall if your parcel is high/low, check on the PARCEL page

IRRIGATION AND NITROGEN MANAGEMENT PLAN (INMP) WORKSHEET																								
Member ID: _____		INMP Field or MU: _____																						
Crop: _____		Total Acres: _____																						
IRRIGATION MANAGEMENT																								
1. Irrigation Method* (check one for Primary; if applicable, check one for Secondary) <table border="0"><tr><td>Primary</td><td>Secondary</td><td></td></tr><tr><td><input type="checkbox"/></td><td><input type="checkbox"/></td><td>Drip</td></tr><tr><td><input type="checkbox"/></td><td><input type="checkbox"/></td><td>Micro Sprinkler</td></tr><tr><td><input type="checkbox"/></td><td><input type="checkbox"/></td><td>Furrow</td></tr><tr><td><input type="checkbox"/></td><td><input type="checkbox"/></td><td>Sprinkler</td></tr><tr><td><input type="checkbox"/></td><td><input type="checkbox"/></td><td>Border Strip</td></tr><tr><td><input type="checkbox"/></td><td><input type="checkbox"/></td><td>Flood</td></tr></table>		Primary	Secondary		<input type="checkbox"/>	<input type="checkbox"/>	Drip	<input type="checkbox"/>	<input type="checkbox"/>	Micro Sprinkler	<input type="checkbox"/>	<input type="checkbox"/>	Furrow	<input type="checkbox"/>	<input type="checkbox"/>	Sprinkler	<input type="checkbox"/>	<input type="checkbox"/>	Border Strip	<input type="checkbox"/>	<input type="checkbox"/>	Flood	Pre-Season Planning	
Primary	Secondary																							
<input type="checkbox"/>	<input type="checkbox"/>	Drip																						
<input type="checkbox"/>	<input type="checkbox"/>	Micro Sprinkler																						
<input type="checkbox"/>	<input type="checkbox"/>	Furrow																						
<input type="checkbox"/>	<input type="checkbox"/>	Sprinkler																						
<input type="checkbox"/>	<input type="checkbox"/>	Border Strip																						
<input type="checkbox"/>	<input type="checkbox"/>	Flood																						
		2. Crop Evapotranspiration (ET, inches)																						
		3. Anticipated Crop Irrigation (inches)																						
		4. Irrigation Water N Concentration (ppm or mg/L, as NO ₃ -N)																						
5. Irrigation Efficiency Practices* (Check all that apply)																								
<input type="checkbox"/> Basin Leveling <input type="checkbox"/> Use of ET in scheduling irrigations <input type="checkbox"/> Water application schedule to need <input type="checkbox"/> Use of moisture probe (e.g. tensiometer)		<input type="checkbox"/> Soil Moisture Neutron Probe <input type="checkbox"/> Pressure Bomb <input type="checkbox"/> Other _____ <input type="checkbox"/> Other _____																						
HARVEST / YIELD INFORMATION																								
6. Production Unit (lbs, tons, etc.)		7. Harvested Yield*																						
		Expected (A)	Actual (B)																					
NITROGEN MANAGEMENT																								
8. Nitrogen Efficiency Practices* (Check all that apply)		Nitrogen Sources	Recommended/Planned N (A)																					
<input type="checkbox"/> Split Fertilizer Applications		9. Soil – Available N in Root Zone (Annualized, lbs/ac)	Actual N (B)																					
<input type="checkbox"/> Irrigation Water N Testing		10. N in Irrigation Water* (Annualized, lbs/ac)																						
<input type="checkbox"/> Soil Testing		11. Organic Amendments* (Manure/Compost/Other, lbs/ac estimate)																						
<input type="checkbox"/> Tissue/Petiole Testing		12. Dry/Liquid Fertilizer N* (lbs/ac)																						
<input type="checkbox"/> Fertigation		13. Foliar Fertilizer N* (lbs/ac)																						
<input type="checkbox"/> Foliar N Application		14. TOTAL NITROGEN (lbs/ac)																						
<input type="checkbox"/> Cover Crops																								
<input type="checkbox"/> Variable Rate Applications using GPS																								
<input type="checkbox"/> Other: _____																								
<input type="checkbox"/> Other: _____																								

* A secondary irrigation system could be used for crop germination, frost protection, crop cooling, etc.
* [Bold Text] Data to be reported to the Coalition on the INMP Summary Report, based on Actual Yield and Actual N

Plan Certifier Initials

ACTUAL

Fill out after harvest, transfer actual data into DMT

The INMP Worksheet is required for all crops with exception of **Pasture** with no external nitrogen applied.

INMP WORKSHEET – STAYS ON-FARM

FALL 2021 (AFTER HARVEST)

- The Actuals are entered into the worksheet, the data is transferred to the INMP SR

HARVEST / YIELD INFORMATION		
Information	Expected (A)	Actual (B)
7. Harvested Yield*		
NITROGEN MANAGEMENT		
Nitrogen Sources	Recommended/ Planned N (A)	Actual N (B)
9. Soil – Available N in Root Zone (Annualized, lbs/ac)		
10. N in Irrigation Water* (Annualized, lbs/ac)		
11. Organic Amendments* (Manure/Compost/Other, lbs/ac estimate)		
12. Dry/Liquid Fertilizer N* (lbs/ac)		
13. Foliar Fertilizer N* (lbs/ac)		
14. TOTAL NITROGEN (lbs/ac)		

germination, frost protection, crop cooling, etc.
INMP Summary Report, based on Actual Yield and Actual N.

Plan Certifier Initials

SPRING 2022

- The INMP worksheet is filled out plus the expected data is entered into the worksheet Spring of 2022

HARVEST / YIELD INFORMATION		
Information	Expected (A)	Actual (B)
7. Harvested Yield*		
NITROGEN MANAGEMENT		
Nitrogen Sources	Recommended/ Planned N (A)	Actual N (B)
9. Soil – Available N in Root Zone (Annualized, lbs/ac)		
10. N in Irrigation Water* (Annualized, lbs/ac)		
11. Organic Amendments* (Manure/Compost/Other, lbs/ac estimate)		
12. Dry/Liquid Fertilizer N* (lbs/ac)		
13. Foliar Fertilizer N* (lbs/ac)		
14. TOTAL NITROGEN (lbs/ac)		

germination, frost protection, crop cooling, etc.
INMP Summary Report, based on Actual Yield and Actual N.

Plan Certifier Initials

FARM REPORTING CROP YEAR 2021

- Does my parcel have high groundwater vulnerability?
- False=Not high vulnerability therefore, low vulnerability
- True=High vulnerability

DS|DMT

MEMBER DATA

Account

Account Contacts

Parcels

Cropping

INMP SUMMARY REPORT

INMP Management Units

INMP Reporting

INMP Certification

Outreach and Training

MPIR

Irrigation Wells

Irrigation Uniformity

Crop Fertility Plan

SECP PLAN

SECP Plan

MAPS AND REPORTS

MEMBER DATA

INMP SUMMARY REPORT

SECP PLAN

FARM EVALUATION

MAPS AND REPORTS

INMP WORKSHEET

1 Account

2 Account Contacts

3 Parcels

4 Cropping

PREVIOUS

Review and Update Parcels Enrolled in the Current Account

NEXT

Important! The Irrigated Lands Regulatory Program requires you have an Irrigation and Nitrogen Management Plan Worksheet for all parcels completed and on-farm. If the parcel is in a high vulnerability area, it must be certified. To complete your worksheet in the DMT, click [here](#) or download the form [here](#).

- Review the parcels associated with the selected account here.
- "Total Parcel Acres" refers to the total acres in the parcel, regardless of whether or not it is irrigated.
- The data items that can be modified are represented in blue.
- If the existing parcels list is not complete, click on 'Add Parcel' button to update accordingly.
- Click the 'Next' button to advance to the next step in the process.
- **Note: If you are farming rice, not irrigating due to transition, your crop is non-commercial or your parcel is fallow, you should DEACTIVATE your parcel. Deactivated parcels will remain on your "Existing Parcels" list and can be REACTIVATED at any time. A reason is required for activating or deactivating a parcel.**

Existing Parcels

Map	County	TRS	APN	High N Vulnerability?	Requires SECP Plan?	Total Parcel Acres	Active?	Deactivation/Reactivation Reason	Deactivation Notes	Deactivation/Reactivation Date
	Solano	T08N-R2E-S14		False	True	14.57	Yes	None	None	N/A
	Solano	T08N-R2E-S23		True	True	26.43	Yes	None	None	N/A

New Parcels

No new parcels exist in the database. Scroll up to review existing parcels or add a new parcel.

FARM REPORTING CROP YEAR 2021

- DMT – Data Management Tool
 - Do you still have your login? If not, contact us ASAP.
 - If you are a new member that did not report in crop year 2020, your login will be sent to you this reporting year.
 - If you are an owner that has a reporter (tenant) complete your farm reporting, then they have a separate login.

VISIT: dixonrcd.org/irrigated-lands

Click on the green button to take you to the login portal.



FARM REPORTING CHECKLIST

- ☐ Verify My **INFO** (contact information)
- ☐ Verify **ACCOUNT**, Reporter name, account completion & account balance
- ☐ Verify **ACCOUNT CONTACT**, billing contact
- ☐ Verify **PARCELS**
- ☐ Verify **CROPPING**, irrigated acres & crop year for permanent crops
- ☐ Complete **INMP SR**, management units, reporting & certification
- ☐ Complete **OUTREACH/TRAINING** – enter the education event “attended”
- ☐ Complete the **GW MPIR** – Groundwater report required for all members
- ☐ Complete **INMP WORKSHEET** – Download and to keep onsite on-farm.

FARM REPORTING CROP YEAR 2021

The RCD office will be open by appointment only. If you need assistance with farm reporting, please call us to arrange an in-person appointment. Farm reporting appointments will begin on December 1st.

Martha (707) 678-1655 x103

Kelly (707) 678-1655 x102





Note: We will be ending the recording before Q & A for anonymity. We will taking notes and posting them on the website along with the video and we will be sure to keep the notes anonymous.