

# GEO TRACKER TUTORIAL

**The Geo Tracker is the State Water Resources Control Boards' (SWRCB) database where drinking water well sample test results are uploaded by certified laboratories.**

**This tutorial was developed by Dixon/Solano RCD Water Quality Coalition Staff to assist their members in navigating the database and is in no way affiliated with nor approved by the SWRCB.**

**July 2022**

# GEO TRACKER DATABASE BACKGROUND

**For Sac Valley, in January 2022, the Drinking Water Well (DWW) Monitoring Requirement began and packets from the Regional Water Quality Control Board were sent to either the landowner or the tenant. This is a new requirement for parcels with wells that are actively used for drinking or cooking and are enrolled in the Irrigated Lands Program. Landowners or tenants have until December 31, 2022 to complete the water sampling process which includes the lab processing the sample and uploading the data to the *Geo Tracker* database.**

# GEO TRACKER DATABASE

Go to the *Geo Tracker* website

Enter Dixon, CA in the search box, click on the magnifying glass

STATE WATER RESOURCES CONTROL BOARD  
**GEO TRACKER**

Tools Reports UST Case Closures How to Use GeoTracker ESI Information

Dixon, CA

<https://geotracker.waterboards.ca.gov>

GeoTracker is the Water Boards' data management system for sites that impact, or have the potential to impact, water quality in California, with emphasis on groundwater. GeoTracker contains records for sites that require cleanup, such as Leaking Underground Storage Tank (LUST) Sites, Department of Defense Sites, and Cleanup Program Sites. GeoTracker also contains records for various unregulated projects as well as permitted facilities including: Irrigated Lands, Oil and Gas production, operating Permitted USTs, and Land Disposal Sites.

GeoTracker portals retrieve records and view integrated data sets from multiple State Water Board programs and other agencies. Users can view these data through a Google Maps GIS interface.

Back to Top Conditions of Use Privacy Policy Accessibility Contact Us

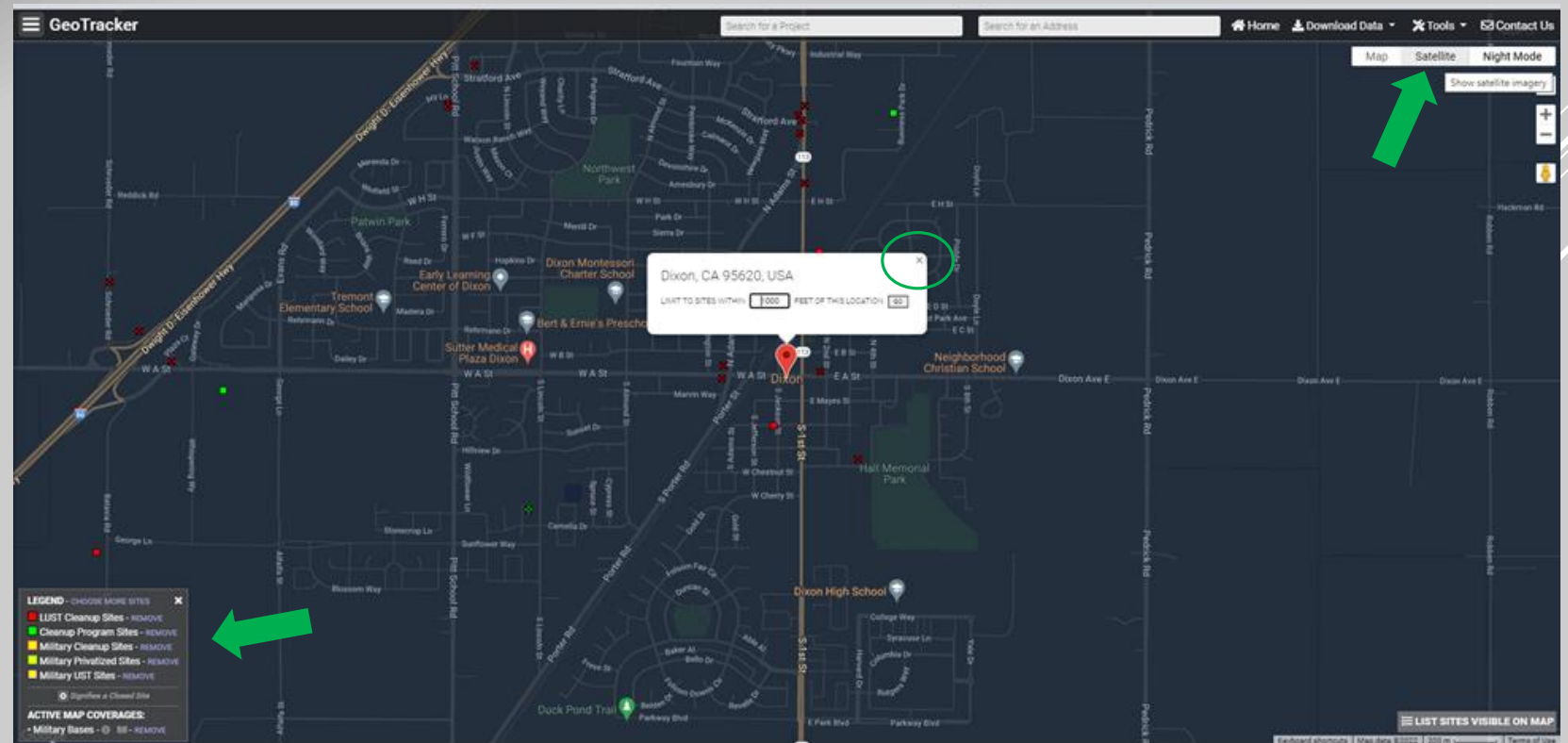
Copyright © 2022 State of California

# GEO TRACKER DATABASE

Click on Satellite mode for the map

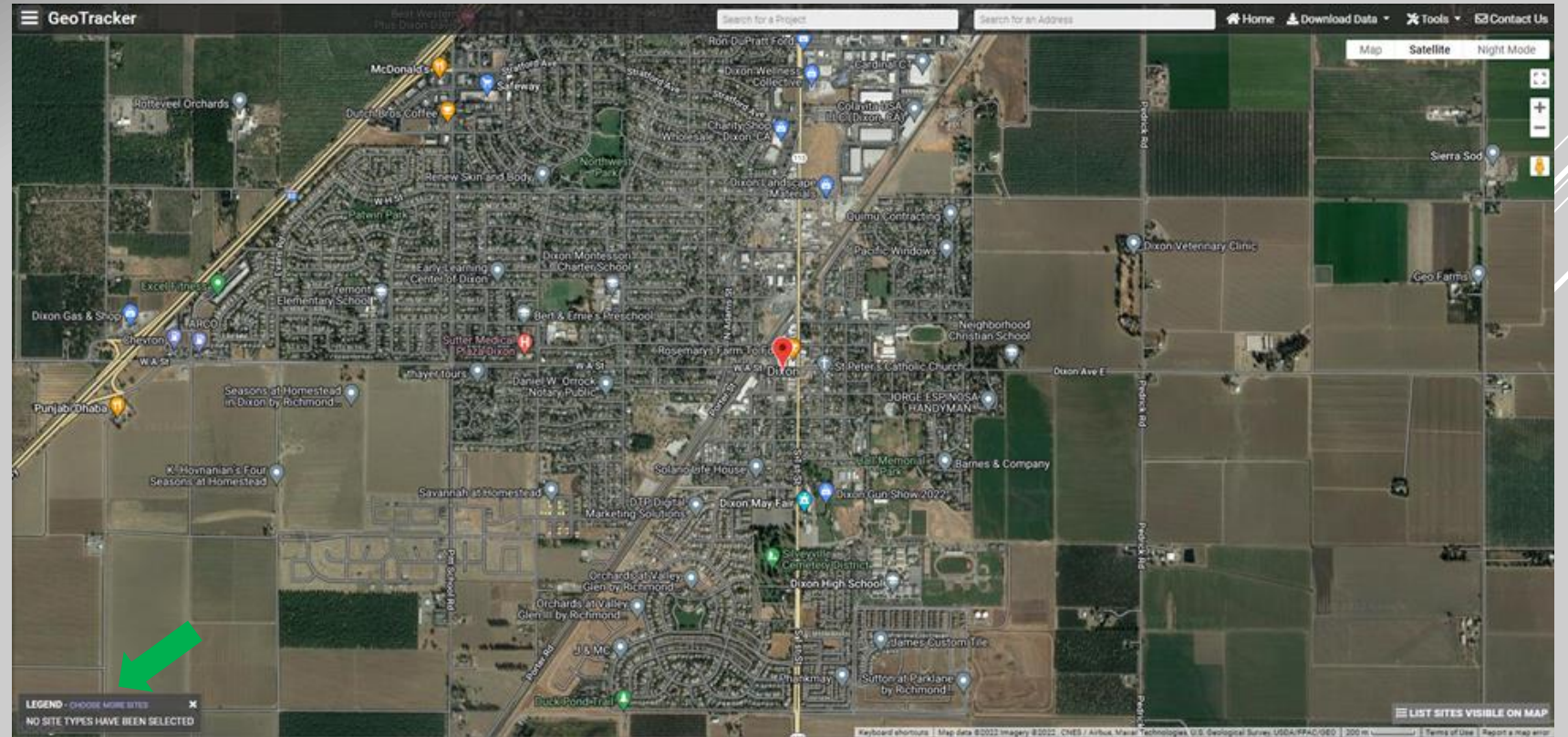
Remove the box in the middle of the page

Click on all **REMOVE** items in the Legend to delete them from the map (6)



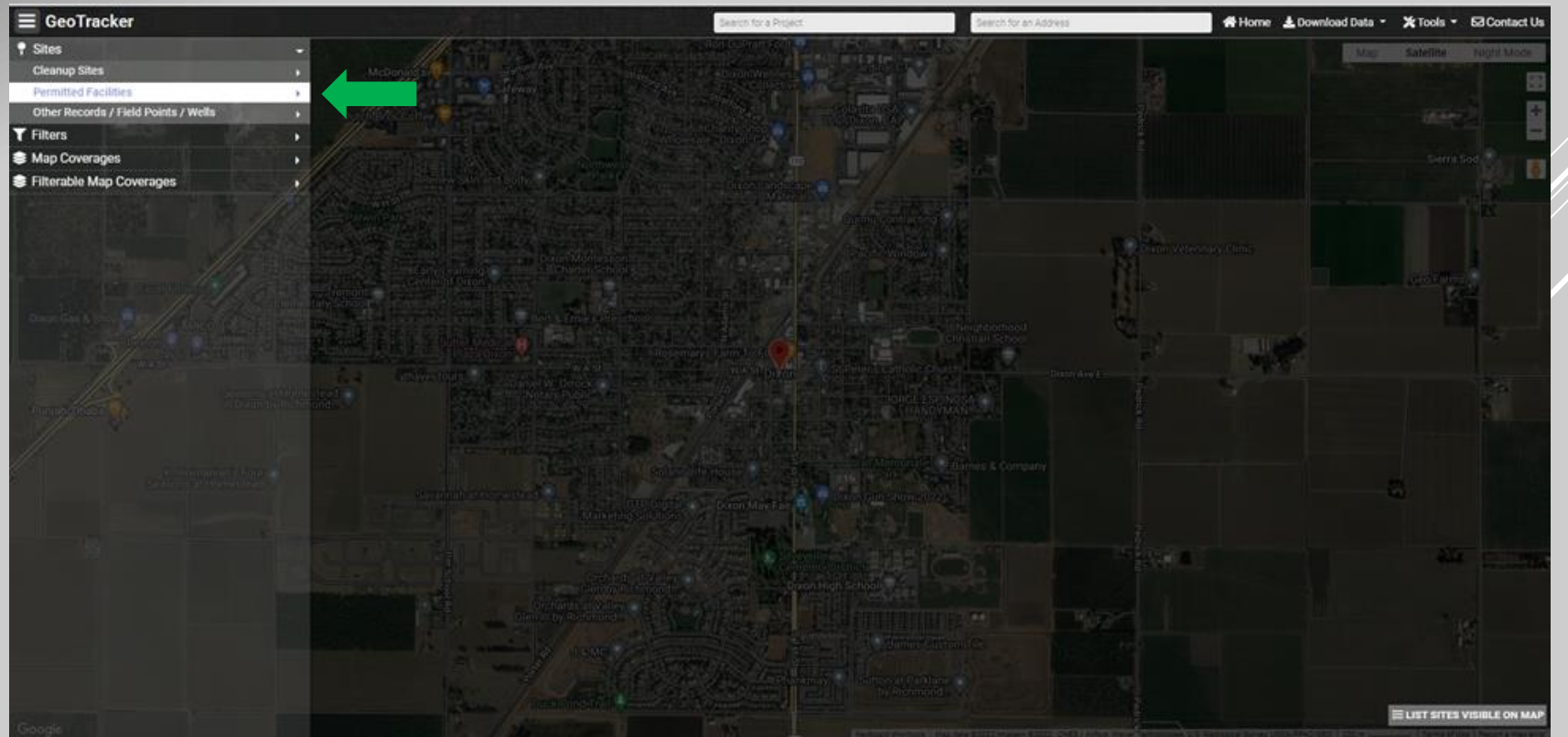
# GEO TRACKER DATABASE

In the Legend, click on  
**CHOOSE MORE SITES**



# GEO TRACKER DATABASE

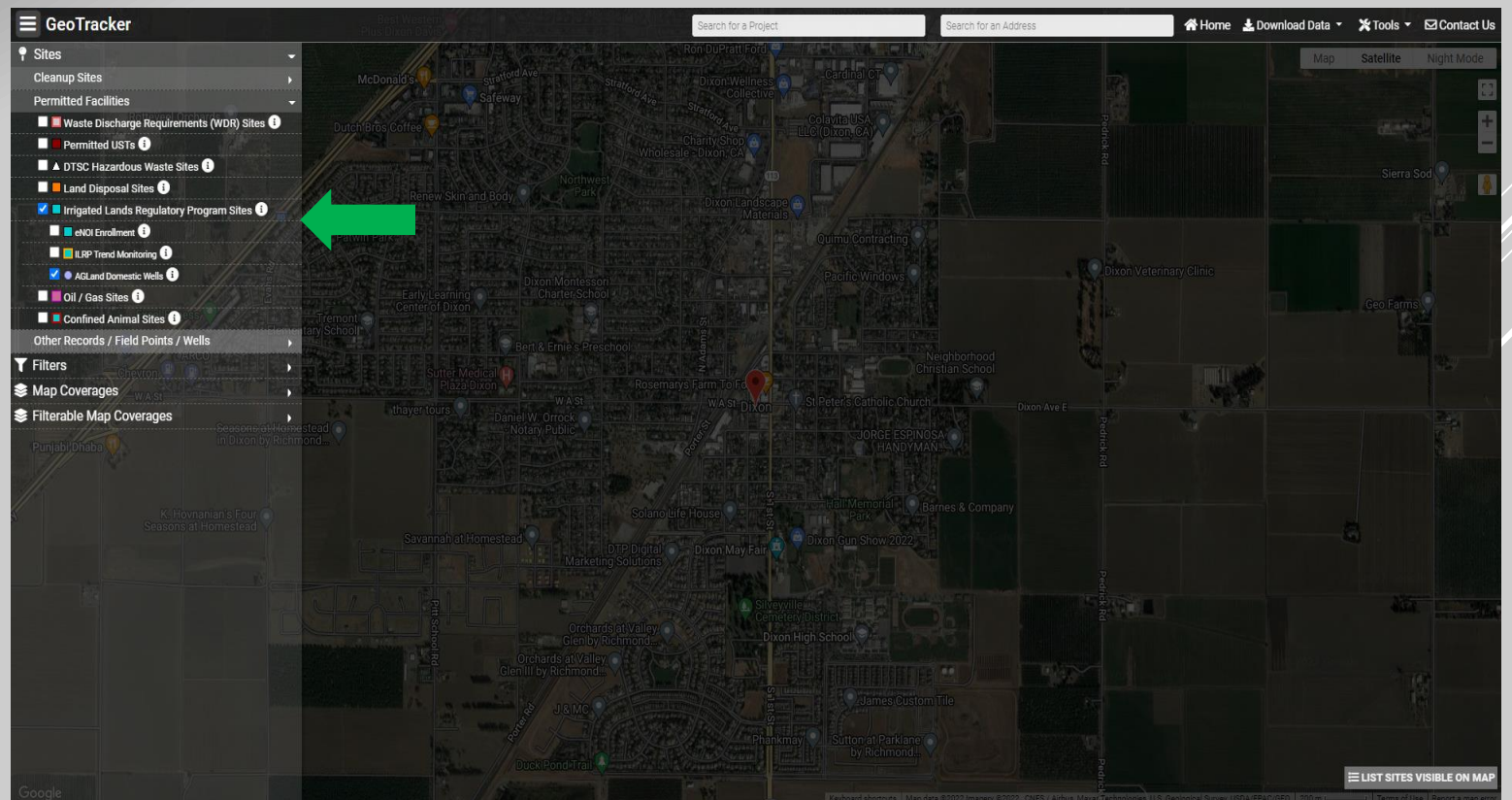
Click on Permitted Facilities



# GEO TRACKER DATABASE

Click on ILRP Sites and  
AG Land and Domestic  
Wells

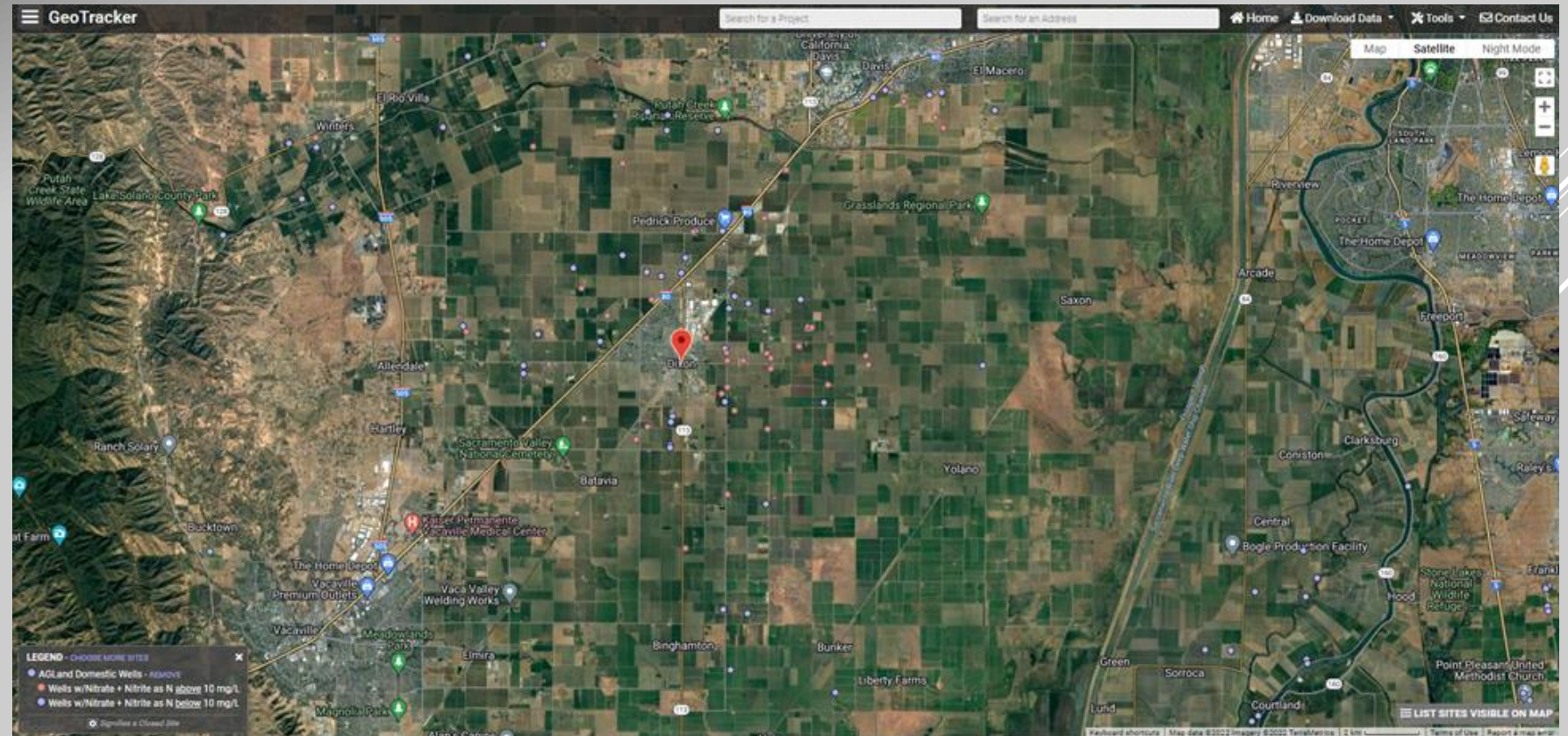
Click away, anywhere on  
the map to remove the  
legend



# GEO TRACKER DATABASE

Zoom out to see the wells in the County and in other areas of California

Note: If you zoom too far out, the system shows an error message, "Too many sites to display, please zoom in" ...





# GEO TRACKER DATABASE

Click on a well (dot) to see the nitrogen, nitrate-nitrite levels, and sample date.

● Nitrate + Nitrite as N above 10 mg/L

● Nitrate + Nitrite as N below 10 mg/L

