

Groundwater Workshop

January 24, 2023

Welcome to the Solano Subbasin



Chris Lee
Solano County Water Agency/Solano Groundwater Sustainability Agency

California SGMA Requirements

**Maintain a Functioning GSA
(Budget and Staffing)**

**Conduct Annual GW Monitoring
and Reporting (each April)**

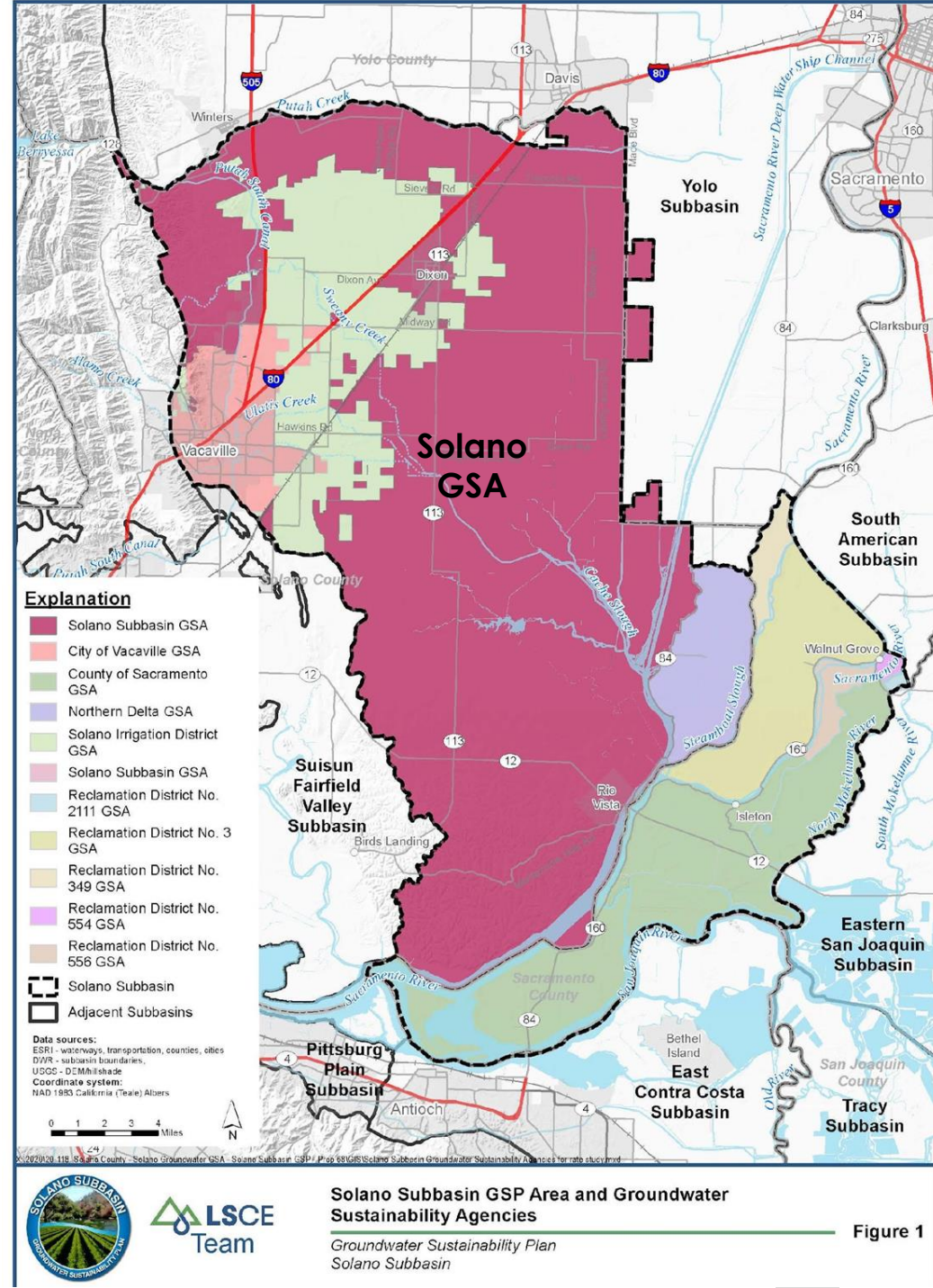
**Ongoing GSA
Coordination/Outreach**

SGMA Compliance

**Prepare/ Approve Five-
Year GSP Updates**

Solano Subbasin is Comprised of Multiple GSAs

- Groundwater Sustainability Plan (Plan Area)
- Find out if you are located in the Solano Subbasin: solanogsp.com/solano-subbasin/



Solano Subbasin GSP Area and Groundwater Sustainability Agencies
 Groundwater Sustainability Plan
 Solano Subbasin

Figure 1

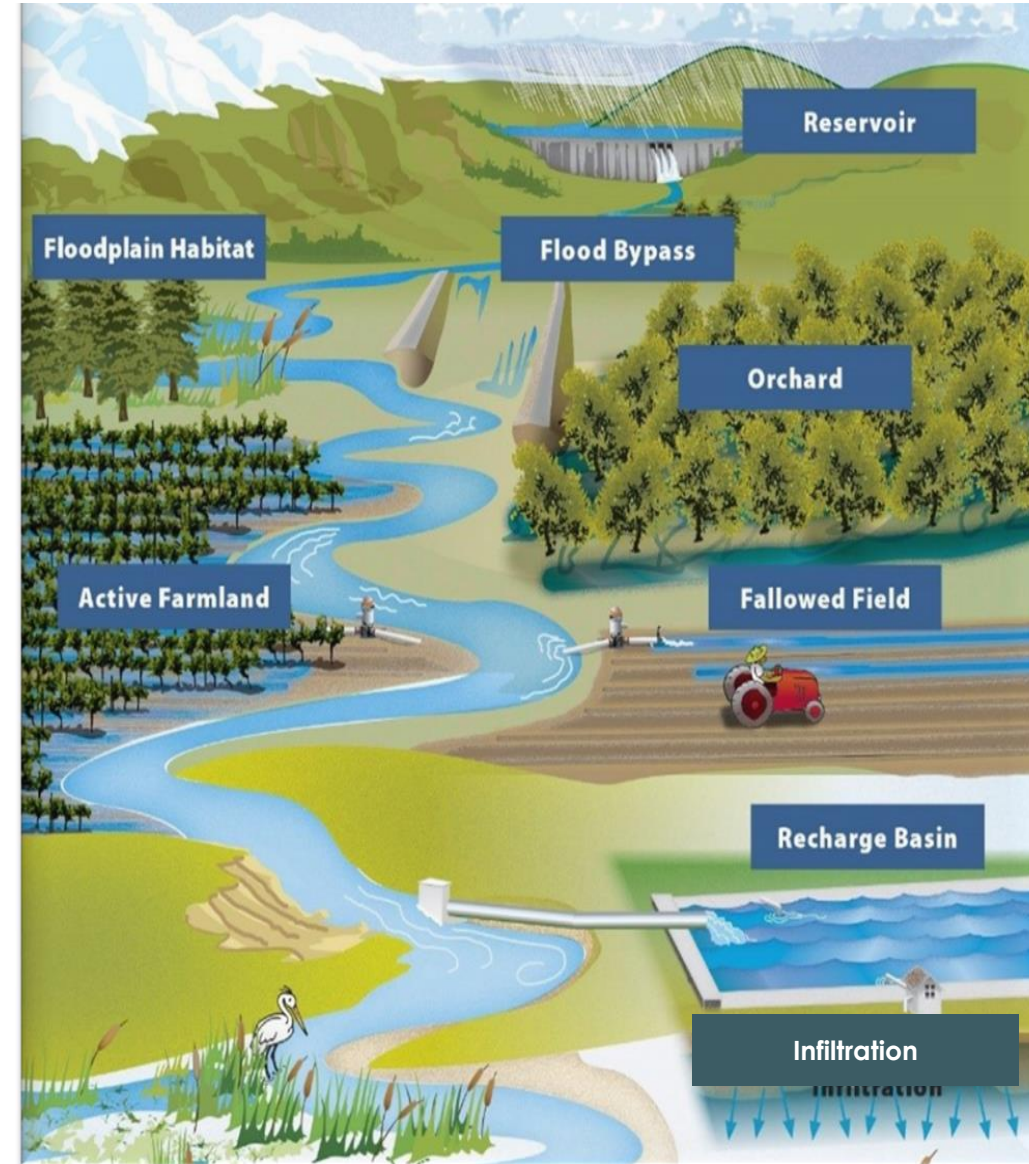
Solano Collaborative



Independent Reclamation District (RD) GSAs; RD 3, RD 349, RD 555, RD 556, RD 2111, RD 317

GSP Implementation: Ongoing Activities

- Annual Reports and Five-Year Updates
- Tracking Groundwater Conditions
- Projects and Management Actions
- Outreach
- Grant Opportunities



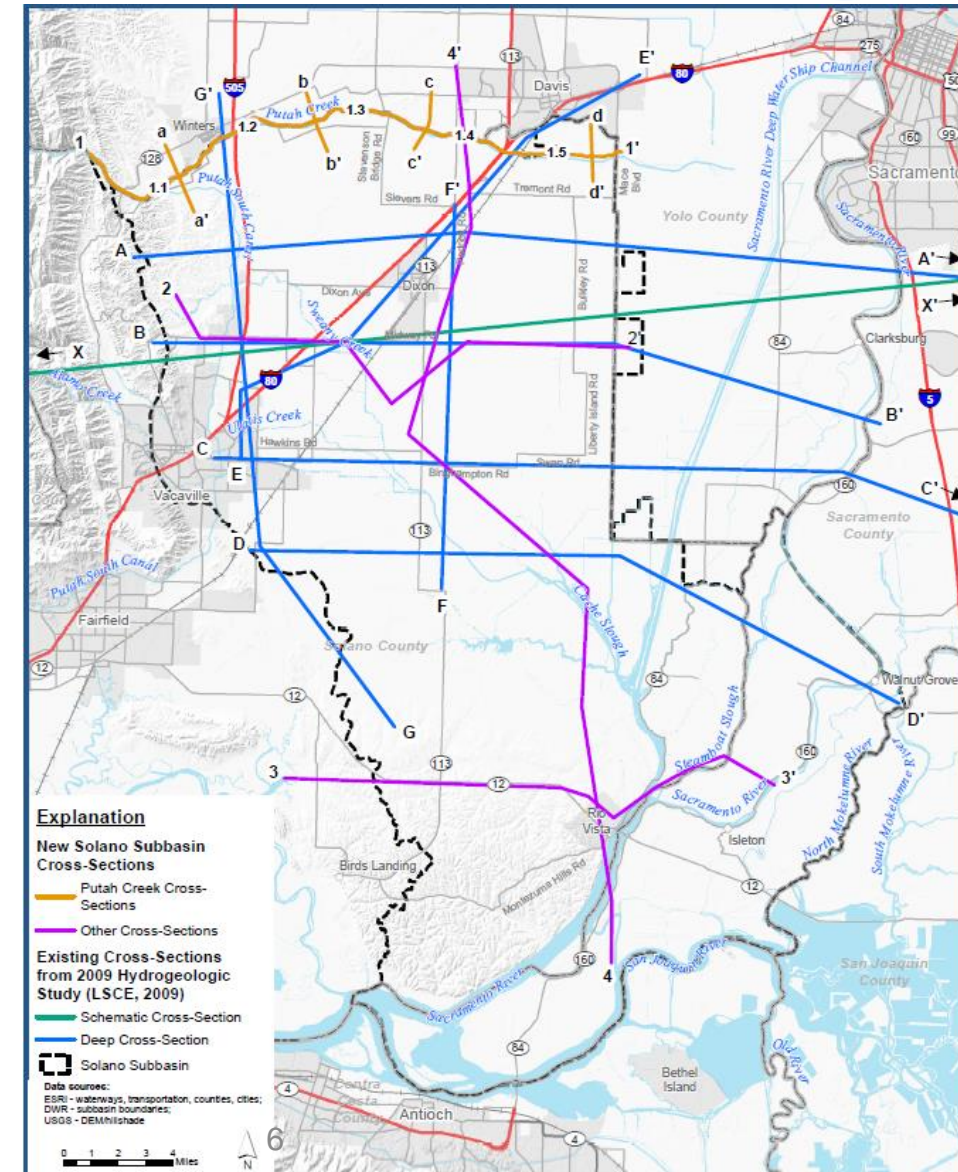
Hydrogeologic Conceptual Model



§ 354.14. Hydrogeologic Conceptual Model

Each Plan shall include a descriptive hydrogeologic conceptual model of the basin based on technical studies and qualified maps that characterizes the physical components and interaction of the surface water and groundwater systems in the basin.

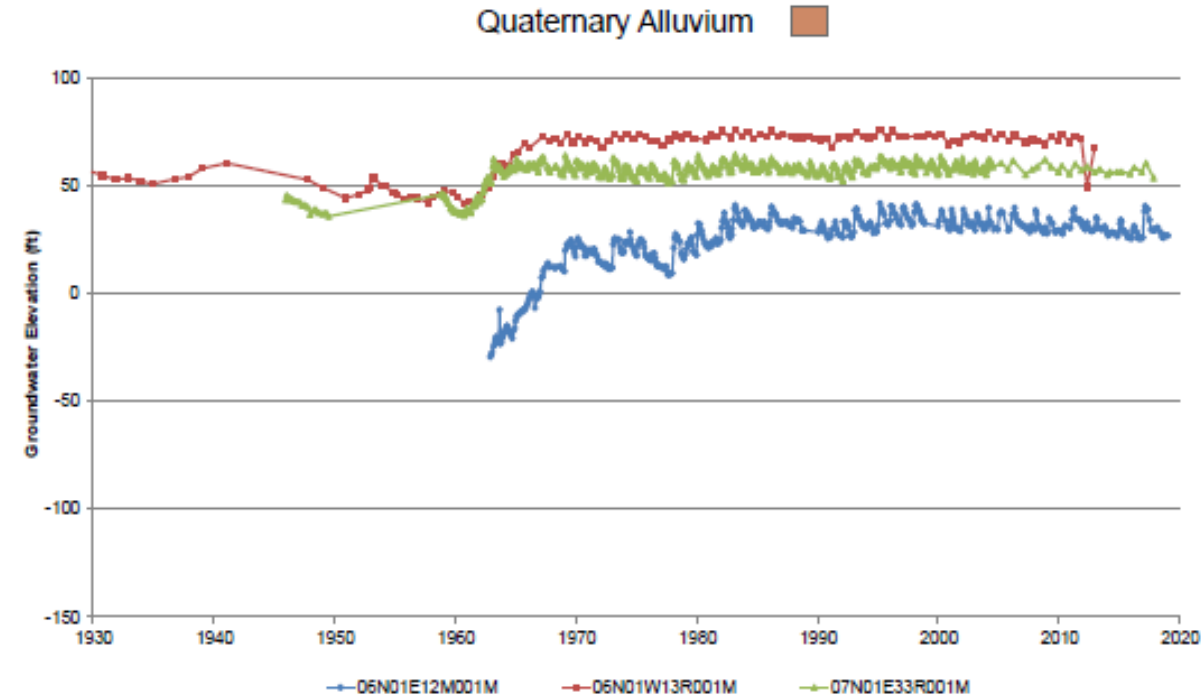
- **Geologic Cross Sections (Key Component of HCM)**
 - 7 prior cross sections focused on deeper conditions
 - 8 new cross sections to enhance HCM
 - 5 shallow sections along Putah Creek
 - 3 across northern and southern areas of Subbasin
- **Lithologic & Geophysical Logs: Characterize Subsurface Sediments to Depths >2500 Ft**



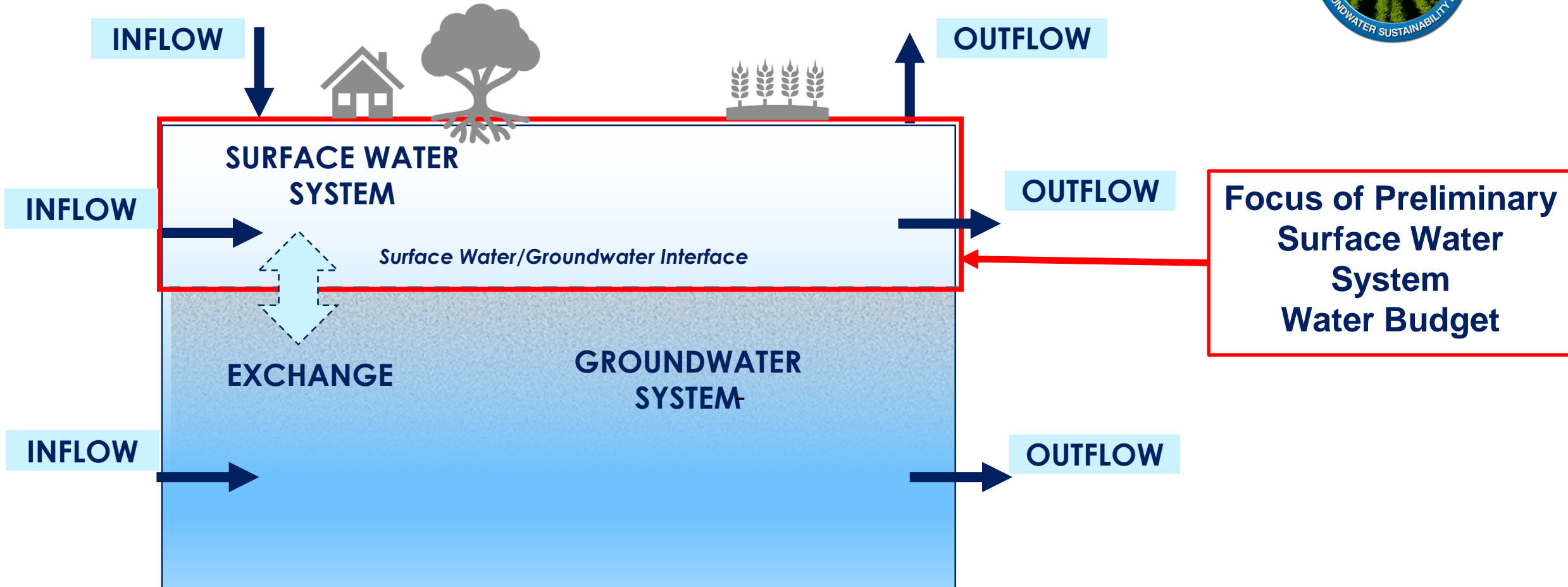


HCM and Groundwater Conditions

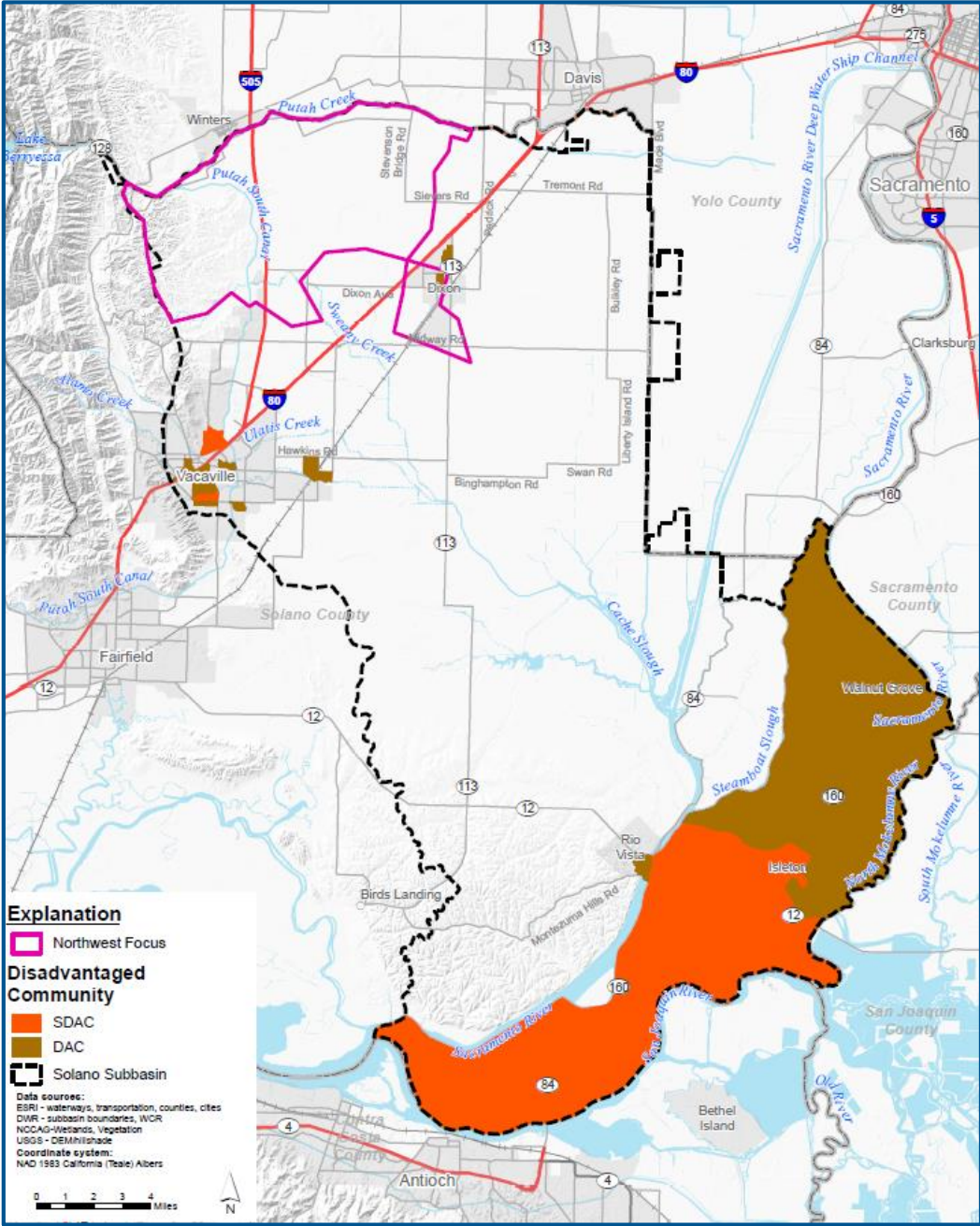
- Previous Hydrogeologic Studies
- Numerous Figures/Maps
- Groundwater Data and Analyses (historical by aquifer/depth zone)
 - GW levels (hydrographs; contours)
 - GW quality (key constituents: TDS; nitrate; boron; arsenic; chromium 6)



Water Budget Schematic: Preliminary Surface Water System Water Budget

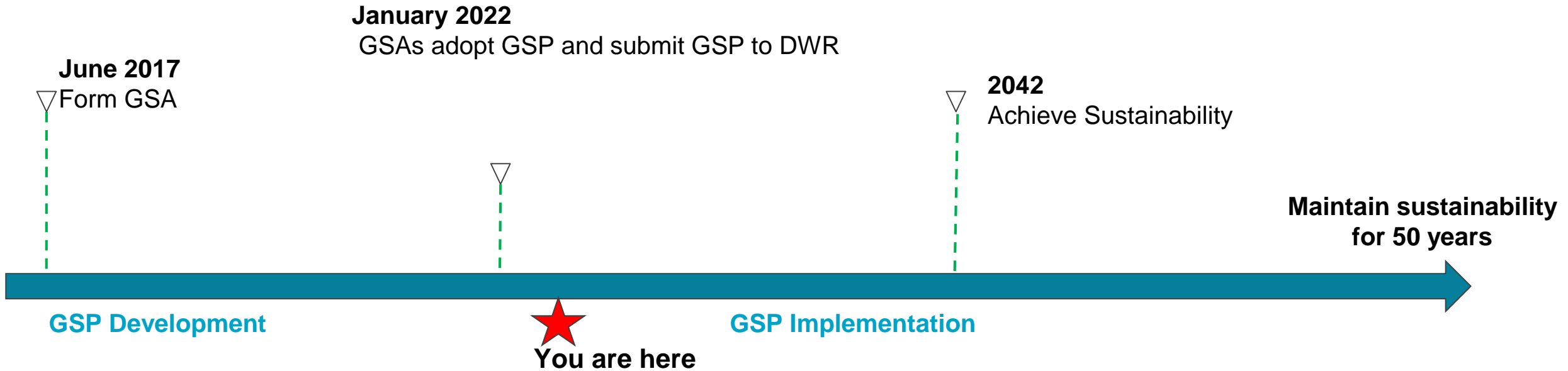


Northwest Focus Area



Solano Subbasin – Long-Term Funding Strategy

SGMA Timeline



Occurring throughout:

- Outreach & Engagement
- Monitoring & Adaptive Management
- Annual reports and 5-year updates

Upcoming Grant Funding Opportunities

Example:	Department of Water Resources SGMA Implementation – Round 2 Funding Cycle
Purpose:	To provide funding support for implementation activities including annual reports, five-year updates, projects, and management actions
Timeline:	Grant application will be submitted in approx. Fall/Winter 2022
GSA Charges:	Will be adjusted accordingly based on future grant funding

Proposition 68 Grant Application

Grant Funding Requests			
Project Title	Cost	Component Ranking	Comments
Component 1- Grant Administration	\$391,000	5	Currently assumes maximum allowable at 10%
Component 2- GSP Monitoring and Data Management Enhancements	\$970,000	2	
Task 1: Monitoring Enhancements and Addressing Monitoring Data Gaps	\$340,000		
Task 2: Data Management System Enhancements	\$250,000		
Task 3: Interconnected Surface Water (ISW) and Groundwater Dependent Ecosystems (GDEs) and Putah Creek Projects	\$380,000		
Component 3- Supporting Groundwater Use Management Actions	\$1,075,000	3	
Task 1: Improving Understanding of Basin Water Use	\$375,000		
Task 2: Local Water Conservation and Management	\$400,000		
Task 3: Groundwater Management Policy- Positioning for the Future	\$300,000		
Component 4- Water Supply Replenishment and Reliability Projects	\$900,000	4	
Task 1- Recharge Study – Targeted Augmentation	\$600,000		
Task 2- Localized Groundwater Conditions Evaluation (near Lake Solano)	\$150,000		
Task 3- City of Vacaville Recycled Water Planning	\$150,000		
Component 5- GSP Implementation, Outreach, and Compliance Activities	\$965,000	1	
Task 1- Prepare Annual Reports	\$400,000		Annual reports WY 2022-2025
Task 2- Modify GSP in Response to DWR Determination	\$15,000		
Task 3- Five-Year GSP Update	\$325,000		Due January 2027, grant funding expires April 2026; approx. 50% of total cost included
Task 4- Stakeholder Engagement and Community Outreach	\$225,000		
Total Funds Requested	\$4,301,000		

Multiple ways to stay involved



Ongoing outreach via:

- Website: SolanoGSP.com
- Newsletters
- Press Releases
- Town Halls
- Events in partnership with RCDs
- Individual GSA Board meetings

Work with beneficial user groups includes:

- Projects and Management Actions
- Inter-basin Coordination
- Intra-basin Coordination
- Tribes
- Disadvantaged Communities



THANK YOU