

# *Dixon/Solano RCD Water Quality Coalition*



## ALL MEMBERS ANNUAL MEETING

ZOOM MEETING – ONLINE-ONLY

TUESDAY, NOVEMBER 19, 2024

5:30 PM – 7:00 PM

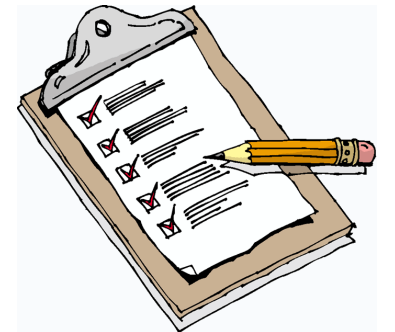
# Irrigated Lands Program

# GROUND RULES FOR ZOOM PARTICIPANTS

- All Zoom participants will be muted for the presentation, you can raise your hand for questions during the meeting or unmute for the Question and Answer (Q & A) portion at the end of the meeting.
- Use the **Chat Room** as an alternative to type in your question.
- Just a reminder we are recording this meeting.

# AGENDA

- GROUNDWATER SUSTAINABILITY PLAN (GSP) UPDATE – Chris Lee, SCWA
- LOCAL EFFORTS, FIELD STUDIES AND PROJECTS – Kelly Huff, Dixon RCD
- PROGRAM & COALITION UPDATE – Martha McKeen, Dixon RCD
- LAST THOUGHTS – Q & A – Question and Answers



# SOLANO GROUNDWATER SUSTAINABILITY PLAN - GSP

Chris Lee, General Manager – Solano County Water Agency (SCWA)



# Coalition Member Meeting

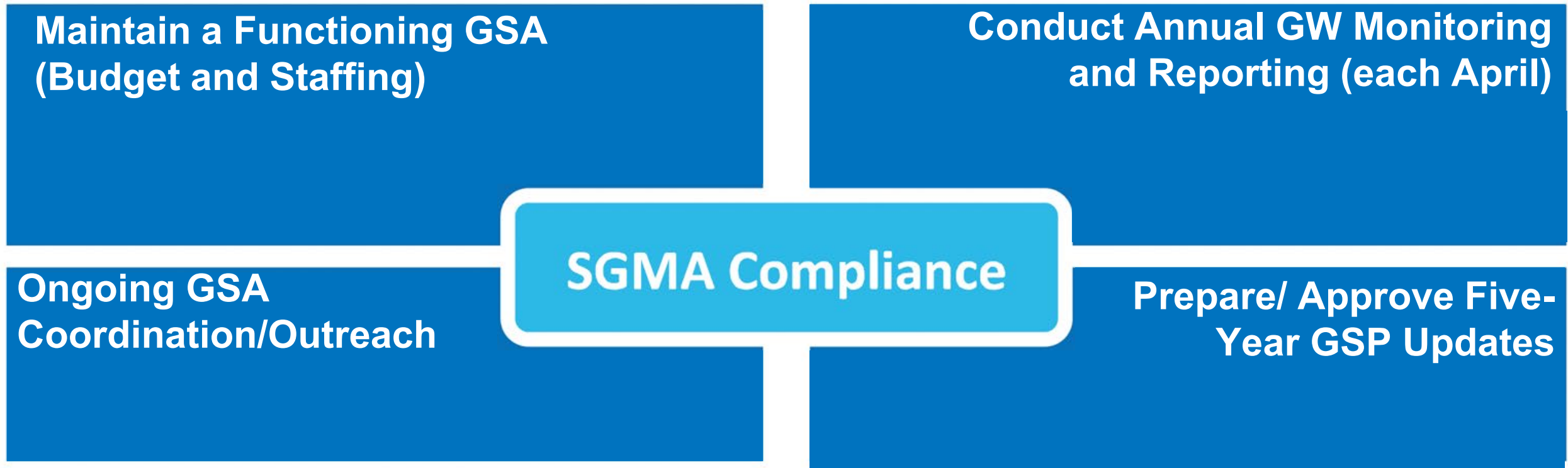
November 19, 2024

## Welcome to the Solano Subbasin



Chris Lee  
Solano County Water Agency/Solano Groundwater Sustainability Agency

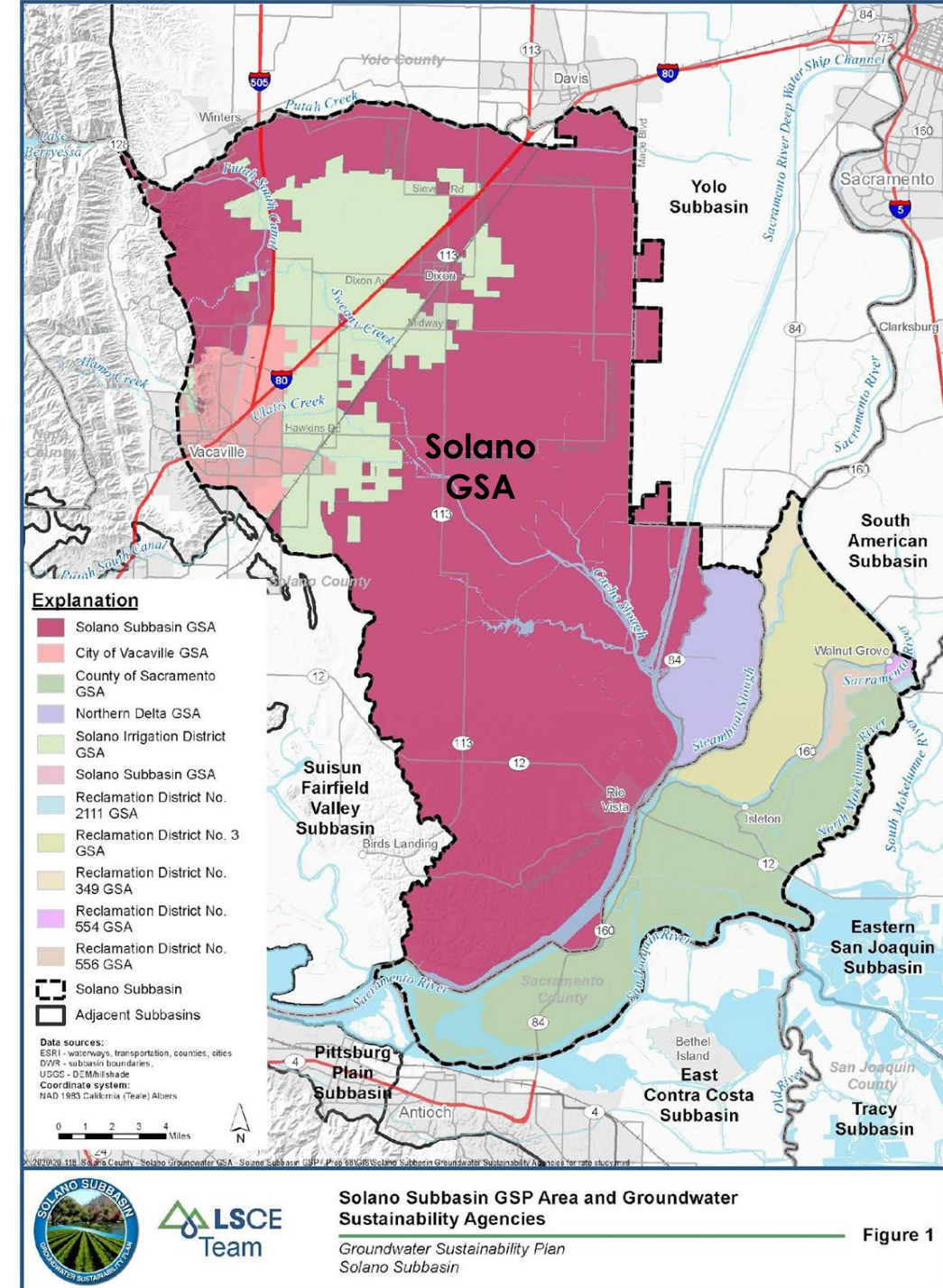
# California SGMA Requirements





# Solano Subbasin is Comprised of Multiple GSAs

- Groundwater Sustainability Plan (Plan Area)
- Find out if you are located in the Solano Subbasin: [solanogsp.com/solano-subbasin/](http://solanogsp.com/solano-subbasin/)



## Solano Collaborative



City of  
Vacaville  
GSA  
City Council



Sacramento  
County GSA  
Board of  
Supervisors



Solano  
Irrigation  
District  
Board of  
Directors



Solano  
Subbasin  
GSA  
Board of  
Directors



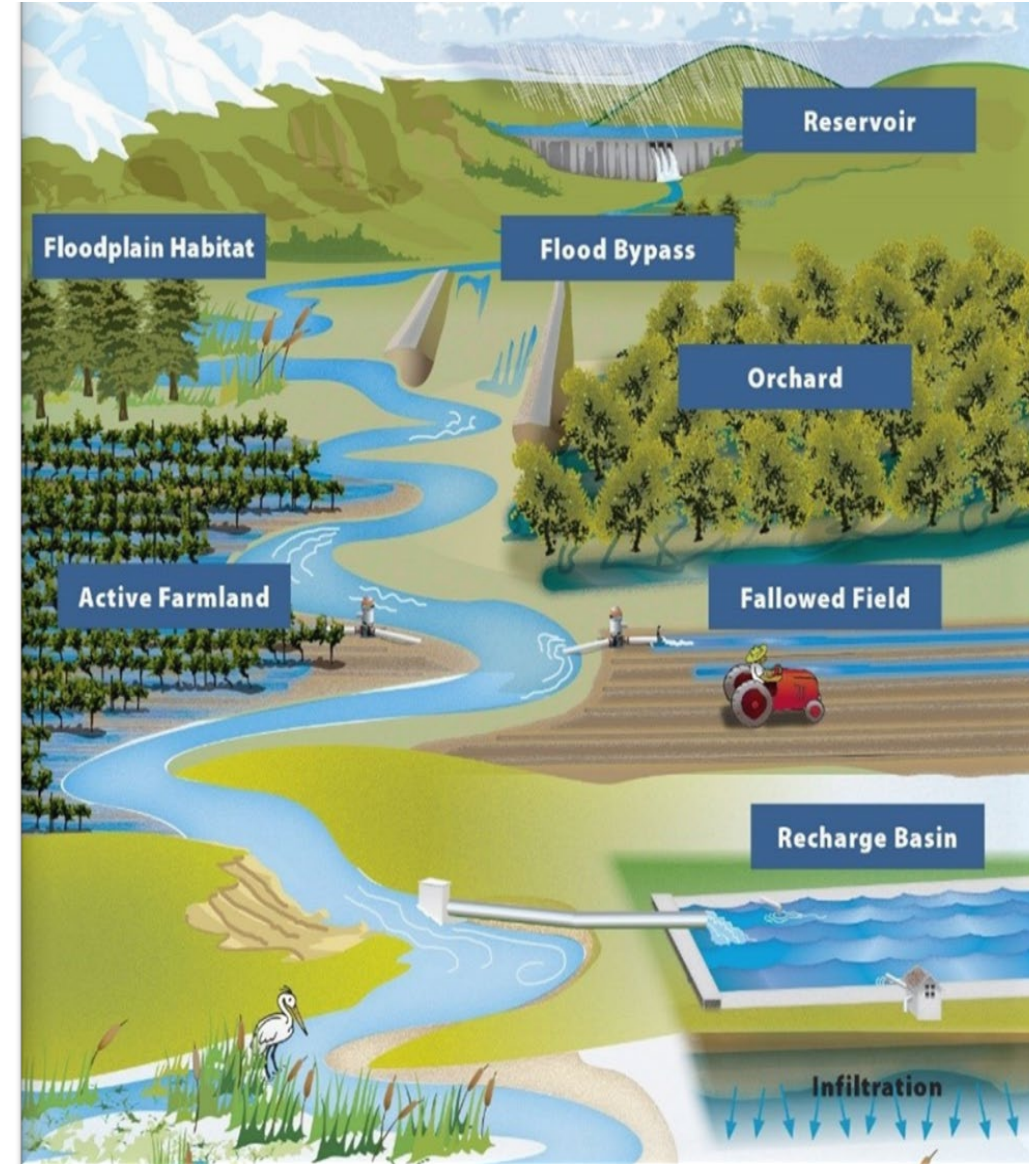
Northern  
Delta GSA  
Board of  
Directors

**Independent Reclamation District (RD) GSAs; RD 3, RD 349, RD 555, RD 556, RD 2111, RD 317**

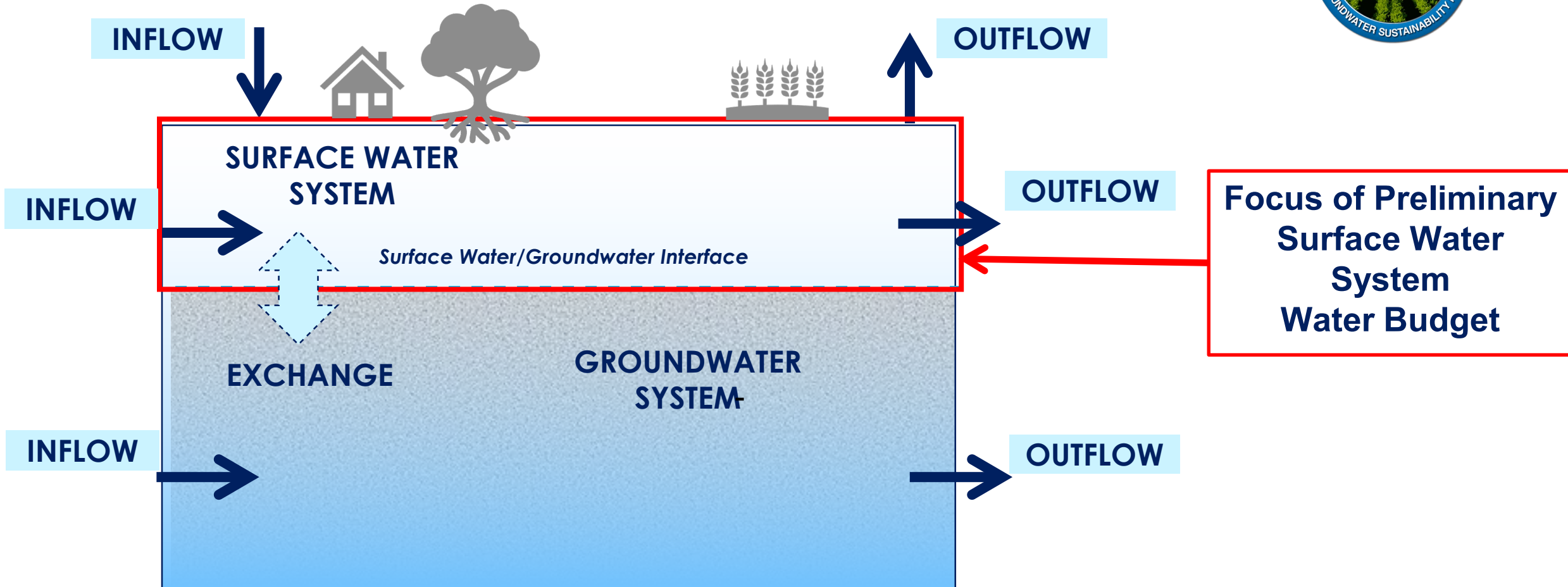


# GSP Implementation: Ongoing Activities

- Annual Reports and Five-Year Updates
- Tracking Groundwater Conditions
- Projects and Management Actions
- Outreach
- Grant Opportunities



# Water Budget Schematic: Preliminary Surface Water System Water Budget



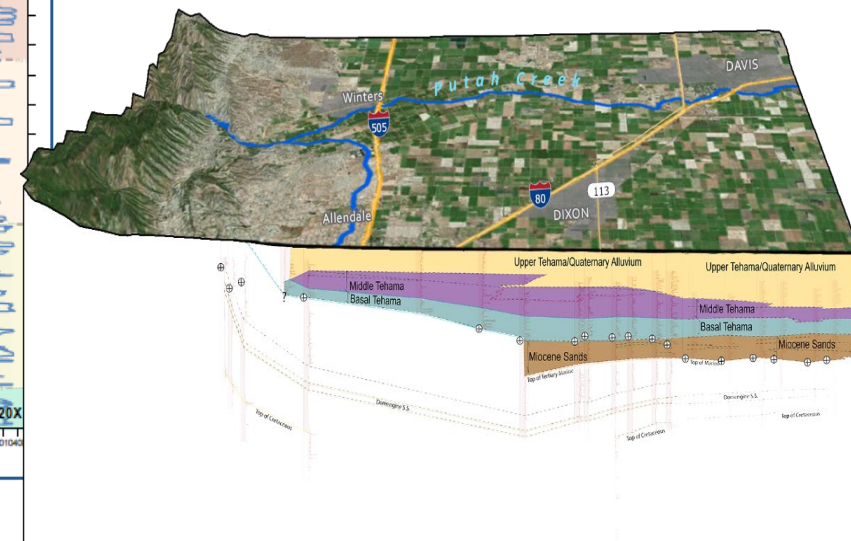
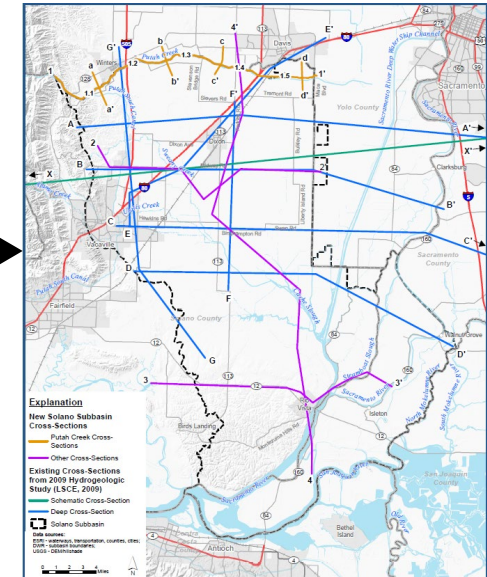
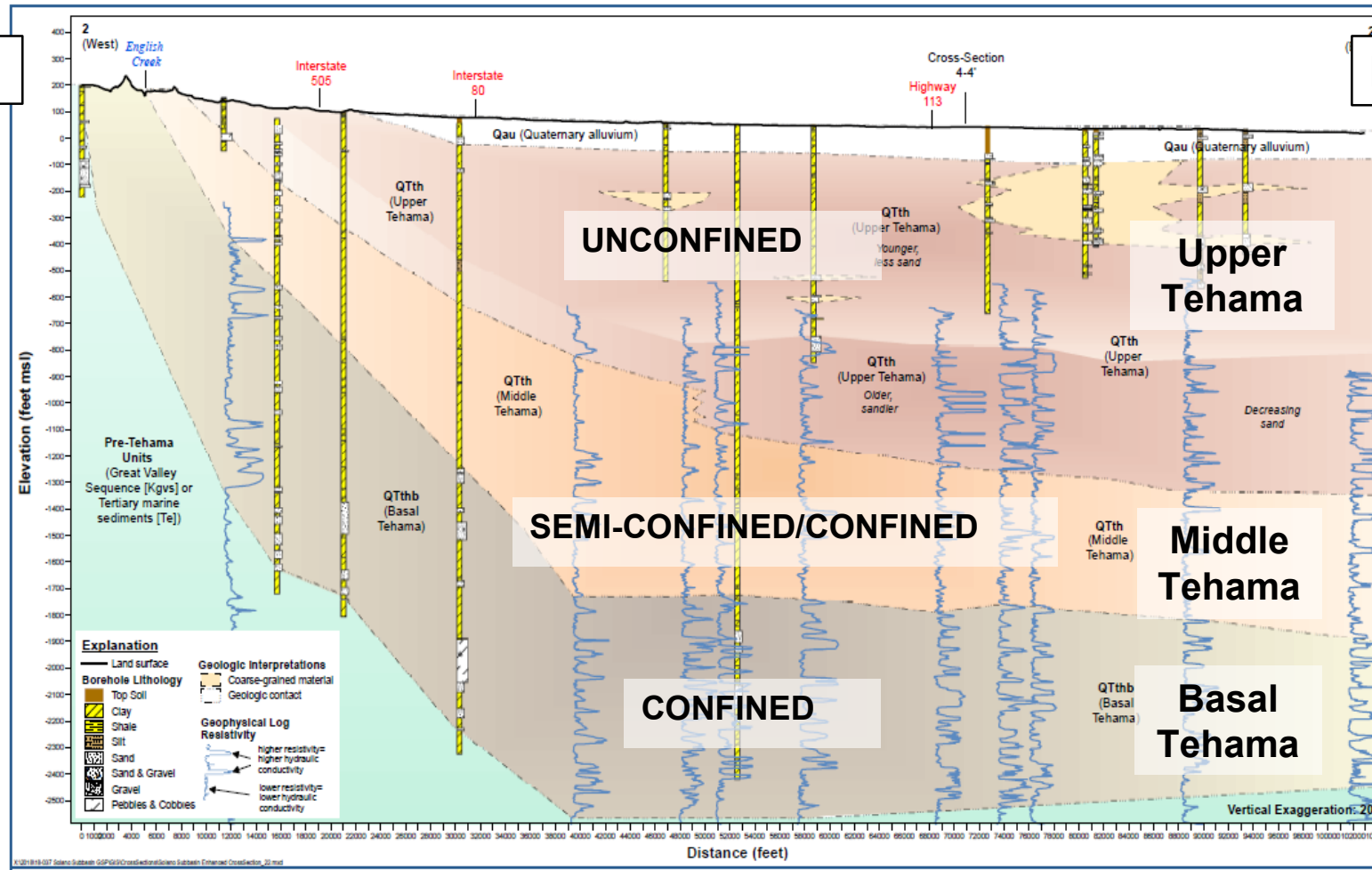


# Geologic Cross Section-2-2'

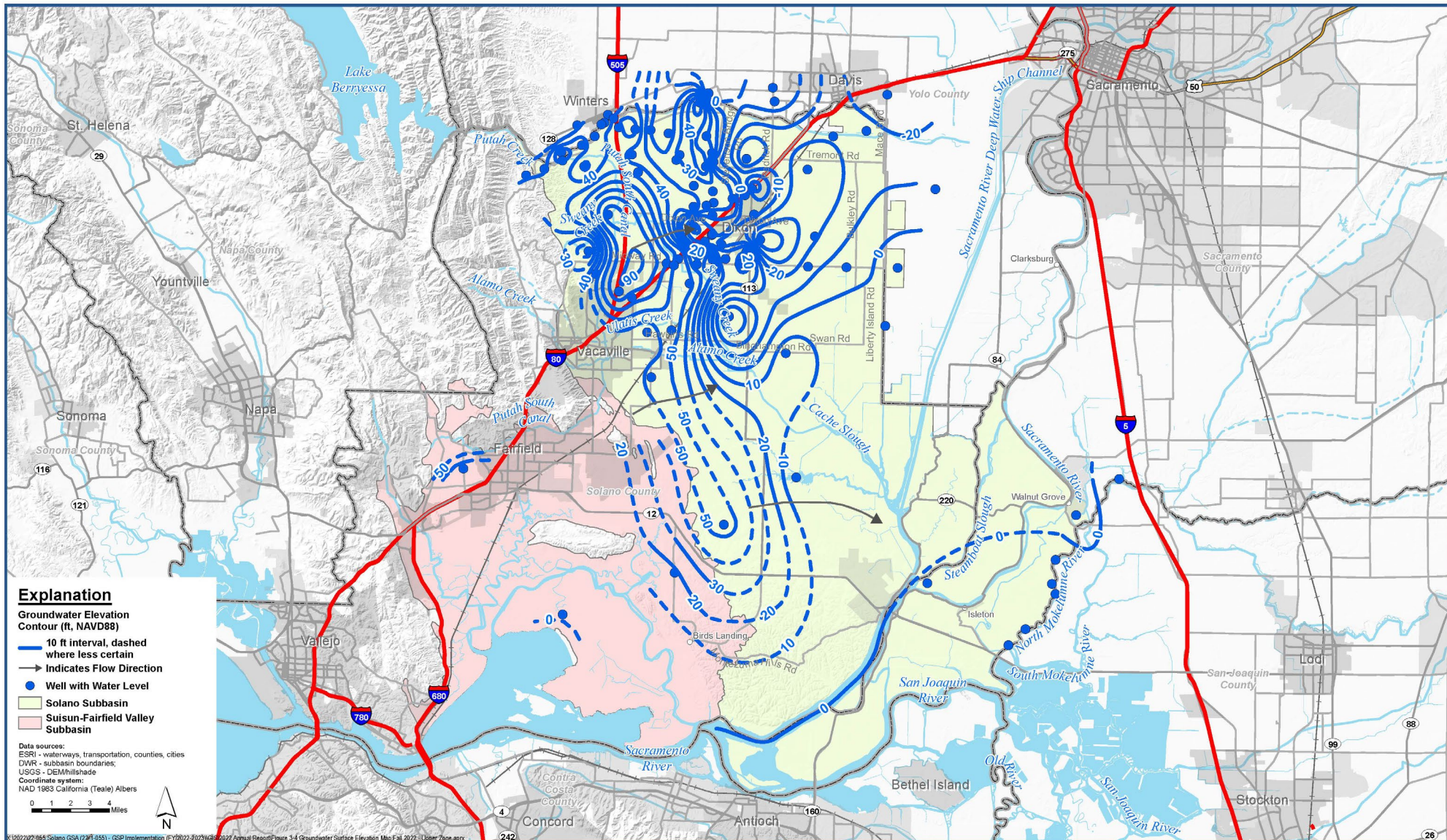


West

East







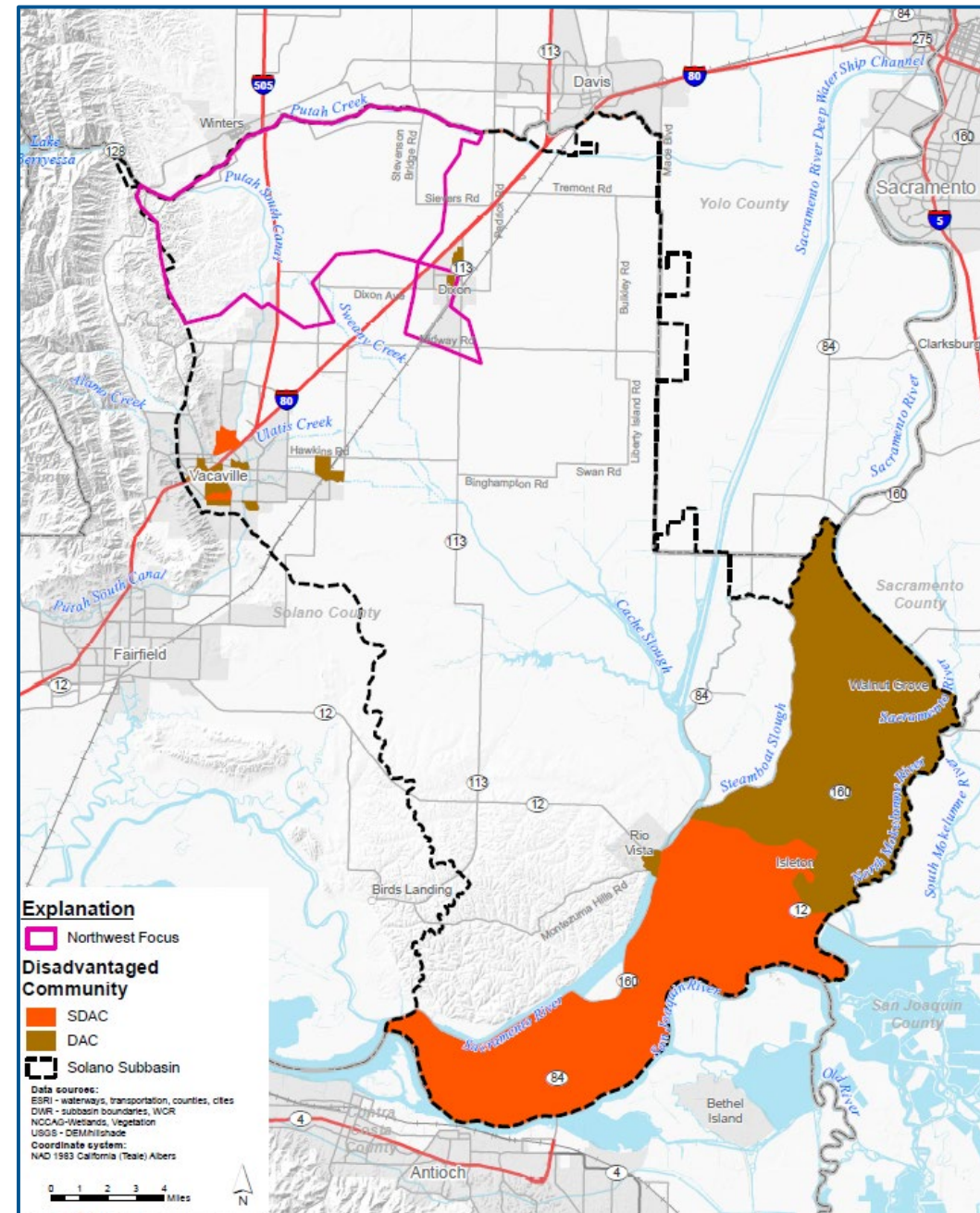
Groundwater Level: Alluvial Aquifer and Upper Tehama Zone - Fall 2022

Solano County and Subbasin  
 Annual Report - Water Year 2022

Figure 3-4



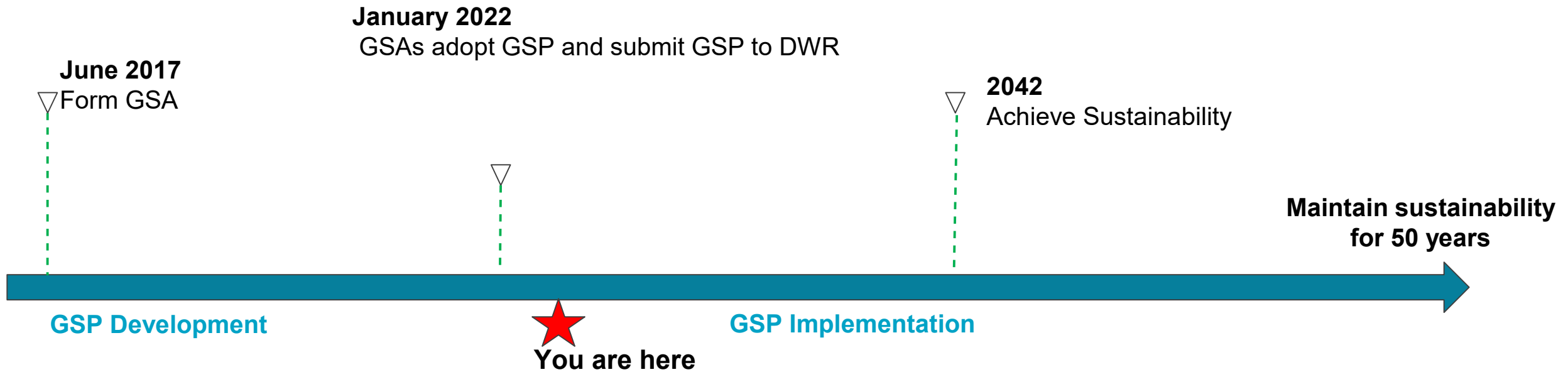
# Northwest Focus Area





# Solano Subbasin – Long-Term Funding Strategy

## SGMA Timeline



Occurring throughout:

- Outreach & Engagement
- Monitoring & Adaptive Management
- Annual reports and 5-year updates



# Proposition 68 Grant-Awaiting Final Grant Agreement

Grant Funding Requests			
Project Title	Cost	Component Ranking	Comments
Component 1- Grant Administration	\$391,000	5	Currently assumes maximum allowable at 10%
Component 2- GSP Monitoring and Data Management Enhancements	\$970,000	2	
Task 1: Monitoring Enhancements and Addressing Monitoring Data Gaps	\$340,000		
Task 2: Data Management System Enhancements	\$250,000		
Task 3: Interconnected Surface Water (ISW) and Groundwater Dependent Ecosystems (GDEs) and Putah Creek Projects	\$380,000		
Component 3- Supporting Groundwater Use Management Actions	\$1,075,000	3	
Task 1: Improving Understanding of Basin Water Use	\$375,000		
Task 2: Local Water Conservation and Management	\$400,000		
Task 3: Groundwater Management Policy- Positioning for the Future	\$300,000		
Component 4- Water Supply Replenishment and Reliability Projects	\$900,000	4	
Task 1- Recharge Study – Targeted Augmentation	\$600,000		
Task 2- Localized Groundwater Conditions Evaluation (near Lake Solano)	\$150,000		
Task 3- City of Vacaville Recycled Water Planning	\$150,000		
Component 5- GSP Implementation, Outreach, and Compliance Activities	\$965,000	1	
Task 1- Prepare Annual Reports	\$400,000		Annual reports WY 2022-2025
Task 2- Modify GSP in Response to DWR Determination	\$15,000		
Task 3- Five-Year GSP Update	\$325,000		Due January 2027, grant funding expires April 2026; approx. 50% of total cost included
Task 4- Stakeholder Engagement and Community Outreach	\$225,000		
Total Funds Requested	\$4,301,000		

# Multiple ways to stay involved



## Ongoing outreach via:

- Website: [SolanoGSP.com](http://SolanoGSP.com)
- Newsletters
- Press Releases
- Town Halls
- Events in partnership with RCDs
- Individual GSA Board meetings

## Work with beneficial user groups includes:

- Projects and Management Actions
- Inter-basin Coordination
- Intra-basin Coordination
- Tribes
- Disadvantaged Communities

# GSP Monitoring Webmap

- Initial tool to support stakeholder communications
- No sensitive well information included, limitation on zooming capability to obfuscate well locations
- Further enhancements planned in grant application
- Letter to landowners in early February
  - Link to webmap  
[https://www.solanogsp.com/subbasin\\_conditions/](https://www.solanogsp.com/subbasin_conditions/)
  - No action required



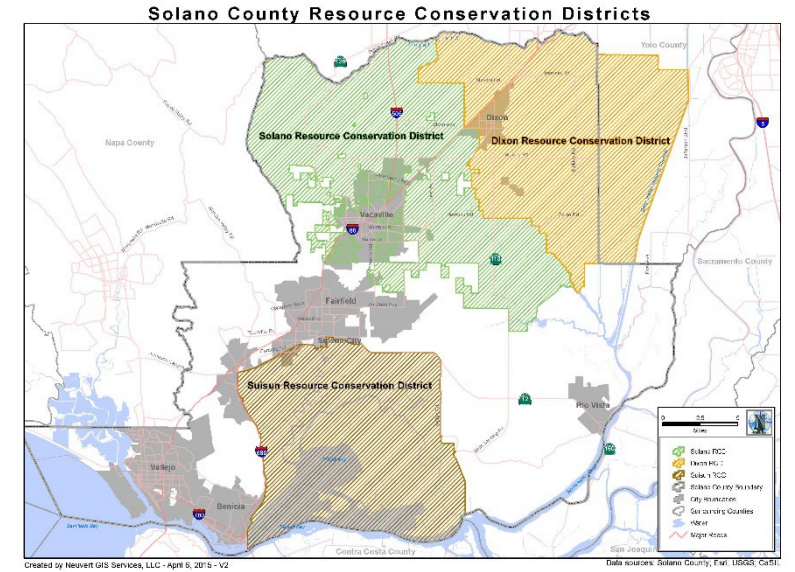
**THANK YOU**



# LOCAL EFFORTS, FIELD STUDIES AND PROJECTS

Kelly Huff, District Manager – Dixon RCD





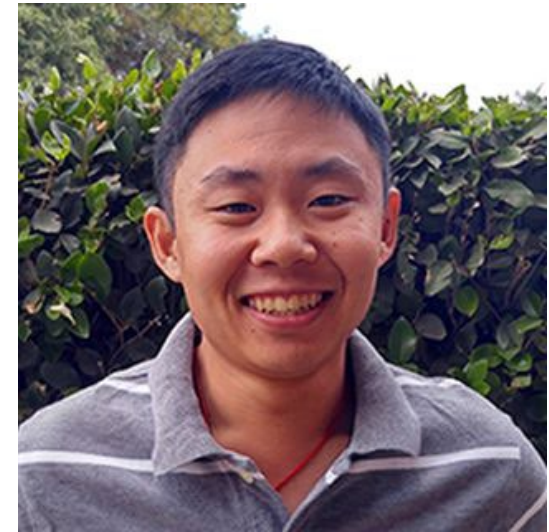
- Provide drainage service to 33,000 acres of ag land around Dixon
- Staff Dixon Regional Watershed Joint Powers Authority – member agencies = Dixon RCD, City of Dixon, Maine Prairie Water District, Reclamation District 2068
- Assist other agencies with connection to landowners and operators



**Monica Quezada**  
*Agriculture Project Manager*  
(707) 678-1655 x122  
monica.quezada@solanorcd.org



**Amy King**  
*Watershed Project Manager*  
(707) 678-1655  
amy.king@solanorcd.org



**Kevin Young-Lai**  
*Watershed and Operations Manager*  
(707) 678-1655 x123  
kevin.young-lai@solanorcd.org



# WHAT is happening????



Solano County Farm Bureau –  
Quarterly events with public officials, annual ag tour, \$10 mill in CDFA block grants (HSP/SWEEP) for region,



## \$5 Million for Healthy Soils Program

### In Round 1

- 21 projects that totaled around \$985,965 for a total of 21 growers in Yolo, Solano, Sacramento counties.

### In Round 2

- We expect to select between 20 and 30 applicants for Round 2, for a total of \$1.5million!

**Round 3 – Final Round, Applications Due 11/30/24!**

# Healthy Soils Program- (HSP)

## FREE WORKSHOP

Virtual Workshop Live on Zoom:

Monday November 4, 2024 @ 10:00 am

(Will be recorded & posted at [www.solanofarmbureau.org](http://www.solanofarmbureau.org))



Grant funds are available to Alameda, Contra Costa, Sacramento, Solano and Yolo County growers through Solano County Farm Bureau for the California Department of Food and Agriculture's (CDFA) Healthy Soils Program. FREE Technical Assistance is available.

Learn how to apply for up to \$100,000 in grant funding to implement agricultural practices that improve soil health, reduce greenhouse gas emissions and store carbon through CDFA's Healthy Soils Program (HSP)

Some of the practices:

Alley Cropping  
Compost  
Conservation Cover  
Cover Crop  
Nutrient Management

**Register now for the free workshop!**  
**Learn more at**  
**[www.solanofarmbureau.org](http://www.solanofarmbureau.org)**

**Applications open**  
**11/1/2024 through 11/30/2024**  
**LAST ROUND OF FUNDING!**

Translation services available



**Monday**  
**November 4, 2024**  
**@ 10:00 am**



Additional HSP Block Grant through Fibershed for operations with goats, sheep or alpacas.  
Contact Amy King!  
[amy.king@solanorcd.org](mailto:amy.king@solanorcd.org)

*WHAT is happening?????*

## Solano County Water Agency

- Wholesaler of Lake Berryessa Water to Solano cities and farms. Managing flows in Putah Creek
- Managing Solano Subbasin GSA & Collaborative of 5 Solano GSAs & \$4.4 million SGMA implementation grant
- Balancing potential massive cuts from the State to local surface water allocations
- Managing & maintaining large flood control facilities, small flood assistance to landowners, municipalities & small districts
- Measuring water flows throughout the County



Recently SCWA staff worked with the farmers and CA Dept. of Fish & Wildlife to install a temporary Fish Ladder to a water control structure, allowing flooding of habitat on the Yolo Bypass Wildlife Area and fish passage to happen simultaneously



*WHAT is happening????*

## Solano County

The Solano County Board of Supervisors is prioritizing agricultural economic development throughout the County

Water Resources – One Water Effort that will lead into a Utility Master Plan for Unincorporated Areas, Update to well and surface water intake inventory.

Public Works – Culvert enhancements in roadside ditches for flood storage. Exploring flood storage incentive programs, potential for purchase of flood control easements

Planning / Ag Department – Sustainable Ag Lands Conservation Grant, Update of General Plan in 2028, Solano Spray Safe Event February 2024



### SOLANOCOUNTY STRATEGIC INITIATIVE FOR AGRICULTURE

**THE SOLANO COUNTY STRATEGIC INITIATIVE FOR AGRICULTURE** is a county-wide effort led by the Board of Supervisors and Agriculture Department along with the agricultural community to pursue the Board of Supervisors' agricultural preservation and economic development priorities. This 2-year project will culminate in agricultural development, infrastructure and land use plans intended to protect the county's working agricultural lands by enhancing the long-term economic viability of local food and agricultural systems.

The Strategic Initiative is funded by a Sustainable Agricultural Lands Conservation (SALC) program grant through the California Strategic Growth Council in collaboration with the Department of Conservation. SALC is part of California Climate Investments, a statewide initiative that puts billions of Cap-and-Trade dollars to work reducing greenhouse gas emissions, strengthening the economy, and improving public health and the environment – particularly in disadvantaged communities.

#### BACKGROUND

Solano County is home to an incredibly diverse agricultural community and economy. The County's geography spans Bay-Delta and Sacramento Valley landscapes featuring ten unique agricultural regions that produce 100 commodities annually. Despite proactive County planning favorable to agriculture, encroachment by cities into agricultural lands contributed to conversion of over 18,800 acres or 5% of Solano County agricultural lands between 2000-2020. A recent assessment of agricultural conditions identified further compounding pressures on agricultural producers: urban expansion is forcing farmers to remove crops or alter farming practices; inflationary pressures, market volatility and rising labor and production costs combined with flat or poor commodity prices are hampering economic viability; land access and escalating land values are serving as barriers to new farmers; regulatory compliance is complex and expensive; and, climate extremes are causing crops losses and increasing levels of uncertainty.

#### OUR MISSION

The Strategic Initiative will meet these challenges through new economic development and infrastructure planning coupled with innovative land use policy updates that keep working farm and ranch lands in active production. Agriculture is the second largest economic driver in the county and provides recreational, tourism, habitat, groundwater recharge, open space and local food co-benefits to all residents. The Strategic Initiative will capitalize on these interrelationships by:

- Developing economic strategies that enhance agricultural production at multiple scales across Solano's diversity of agricultural sectors and regions, secure essential agricultural processing, transportation and distribution networks, promote a vibrant agritourism industry and cultivate healthy local food systems;
- Identifying utility and technological infrastructure needs required to support precision agriculture, indoor agriculture, processing and production capacities; and,
- Designing agriculture-compatible land use policy actions promoting city-centered growth, community separators, workforce housing and other environmental, social and public health co-benefits.

#### WHAT THE SOLANO STRATEGIC INITIATIVE FOR AGRICULTURE WILL DO:

- Engage a coalition of strategic partners intent on securing a prosperous local food and agricultural economy
- Build an agricultural economic development plan ensuring investment in a profitable and enduring future for producers, processors and supporting industries
- Assess needs and recommend improvements to agricultural infrastructure
- Develop a land use action plan supporting the agricultural economy and conservation of working agricultural lands



For more information contact Ed King, Agricultural Commissioner: [eking@solanocounty.com](mailto:eking@solanocounty.com) or (707) 784-1310



<https://www.solanogsp.com/outreach/events-archive/>

## Virtual Town Halls

The Solano Collaborative hosts Town Halls about groundwater sustainability in the Solano Subbasin. Below are links to past Virtual Town Hall agendas, presentations, and recordings.

### May 22, 2024 - Solano Subbasin Groundwater Sustainability Virtual Town Hall

Didn't get an opportunity to join us at the May Virtual Town Hall? You can watch the full meeting recording as well as short videos highlighting some of the recent groundwater sustainability projects being implemented in the Solano Subbasin. **All videos include closed captions that are available in Spanish.**

The screenshot shows a presentation slide titled "Furrow Cover Crop Trials" with the Spanish translation "Ensayos con cultivos de cobertura en surco" below it. The slide contains three photographs: a wide view of a field with rows of young green plants, a close-up of a single plant, and another view of the rows. A small video inset on the right shows a man speaking. The slide number "21" is in the bottom right corner. Below the main slide are four smaller thumbnails representing other presentation slides, each with a similar layout and content related to the Solano Subbasin and cover crop trials.

*DO YOU HAVE IDEAS?????*

Call/Email Us!

(707) 678-1655

[martha-mckeen@dixonrcd.org](mailto:martha-mckeen@dixonrcd.org) or [kelly-huff@dixonrcd.org](mailto:kelly-huff@dixonrcd.org)

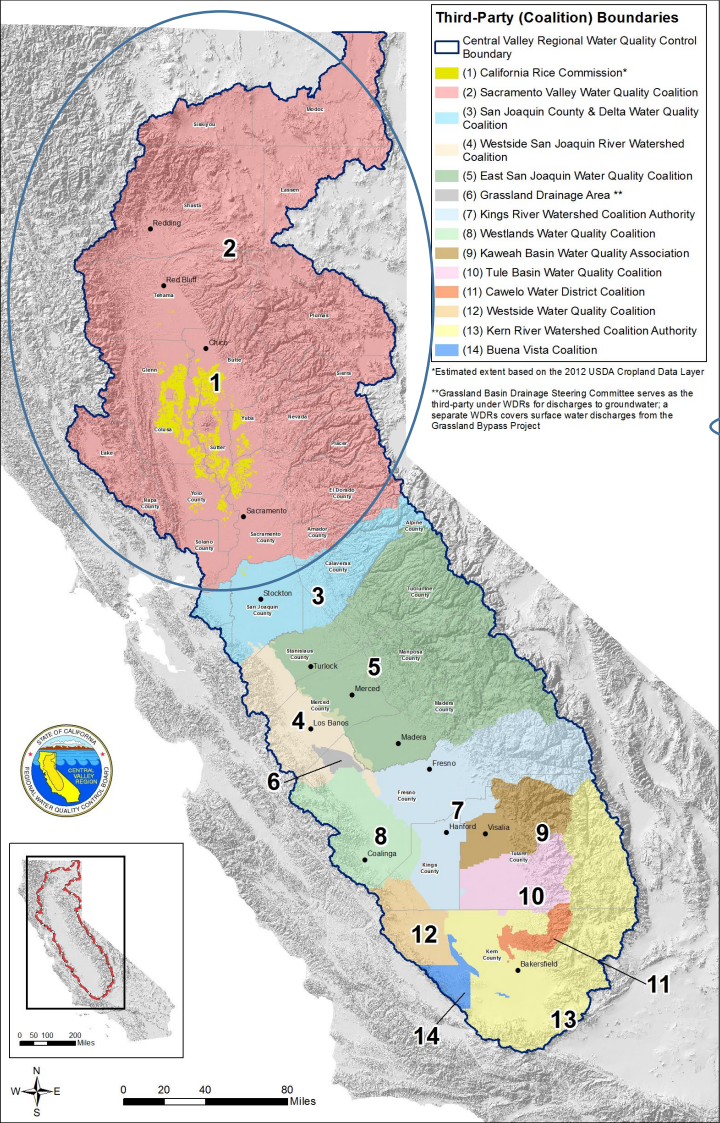




# COALITION UPDATE

Martha McKeen, Program Coordinator – Dixon RCD

# CENTRAL VALLEY REGIONAL WATER QUALITY CONTROL BOARD – REGION 5



## Third-Party (Coalition) Boundaries

Central Valley Regional Water Quality Control Boundary

(1) California Rice Commission\*

(2) Sacramento Valley Water Quality Coalition

(3) San Joaquin County & Delta Water Quality Coalition

(4) Westside San Joaquin River Watershed Coalition

(5) East San Joaquin Water Quality Coalition

(6) Grassland Drainage Area\*\*

(7) Kings River Watershed Coalition Authority

(8) Westlands Water Quality Coalition

(9) Kaweah Basin Water Quality Association

(10) Tule Basin Water Quality Coalition

(11) Cawelo Water District Coalition

(12) Westside Water Quality Coalition

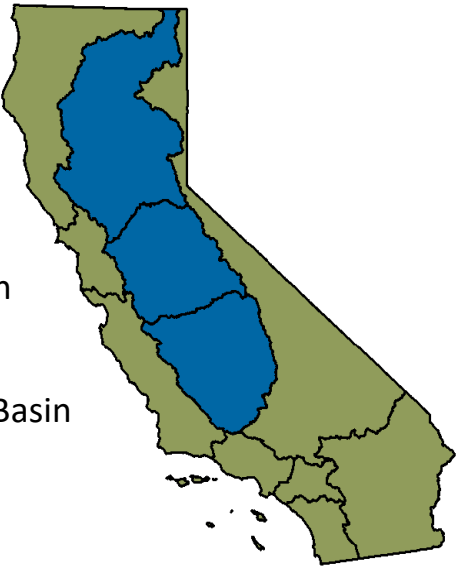
(13) Kern River Watershed Coalition Authority

(14) Buena Vista Coalition

## “Regional Board”

- Region 5 is divided into three major watersheds:

- Sacramento River Basin
- San Joaquin River Basin
- Tulare Lake River Basin



Sacramento River Basin is the largest watershed in CA with approx. 27,000 sq. miles and 30% of the state’s total surface water!

# SACRAMENTO VALLEY WATER QUALITY COALITION (SVWQC)

- SVWQC was formed by the Northern CA Water Association (NCWA)
- SVWQC holds the “group permit” with the Regional Board
  - Bruce Houdesheldt, Director of Water Quality
  - Chelsie Bryden, Program Coordinator
- Dixon/Solano RCD Water Quality Coalition (DSRCDWQC) is one of 11 subwatersheds in the Sacramento River Basin

# Sacramento River Basin or Watershed



**11 ~~13~~ Subwatersheds**

## Upper Subwatersheds

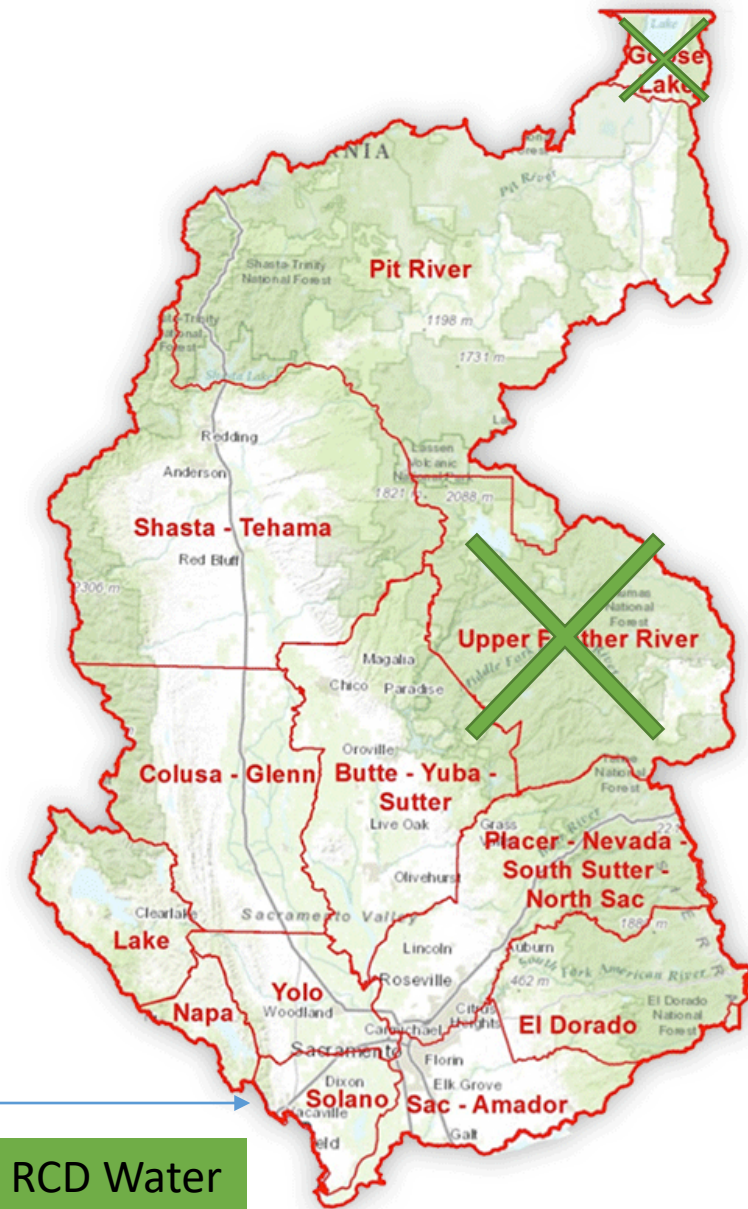
- Pit River
- Shasta-Tehama
- PNSSNS
- El Dorado
- Lake
- Napa

## Exempt Subwatersheds

- Goose Lake (Exemption from RB in 2021)
- Upper Feather River (Exemption from RB in 2022)

## Valley Floor Subwatersheds

- Colusa-Glenn
- Butte-Yuba-Sutter
- Yolo
- Solano
- Sac-Amador



**Dixon/Solano RCD Water Quality Coalition**

# WHAT DOES THE SVWQC DO?

- Attend Regional Board meetings on our behalf, keep up on requirements, and reporting dates, coordinate meetings, trainings, and water quality monitoring
- Ensure the Regional Board stays current on outreach and compliance efforts for unenrolled, non-reporters, and non-responsive landowners.
- Assist efforts of the upper subwatersheds to exempt irrigated pastures and those landowners that do not apply nitrogen. (Pit River and other Upper subwatersheds)
- How about Dixon/Solano Pasture - No nitrogen applied exemption from the program?
  - The valley floor subwatersheds have a different landscape than the upper subwatersheds therefore will have some risk to groundwater so an exemption is probably not going to happen here.
  - Pasture – No N exemptions for the valley floor parcels:
    - Do not have to complete the INMP Worksheet or INMP SR (irrigation and nitrogen management plan summary report)
    - Do not have to do the GW MPIR (groundwater management plan implementation report)

# WHAT DOES THE SVWQC DO?

- Host subwatershed tours with Regional Board staff: Highlights farming practices and the dedication of Sac-Valley farmers and ranchers in protecting water quality.
- 2023 Tours:
  - Colusa/Glenn and Butte/Yuba/Sutter - August 2023
  - Pit River - October 2023
- 2024/2025 Tours: (tentative)
  - Shasta-Tehama - November 2024
  - Sac-Amador - December 2024
  - Placer Nevada South Sutter North Sacramento - January 2025
  - **Dixon/Solano - February 2025**

# MEMBERSHIP TOTALS

- 630 - Members enrolled
- 1,435 - Parcels enrolled
- 122,100 - Acres enrolled



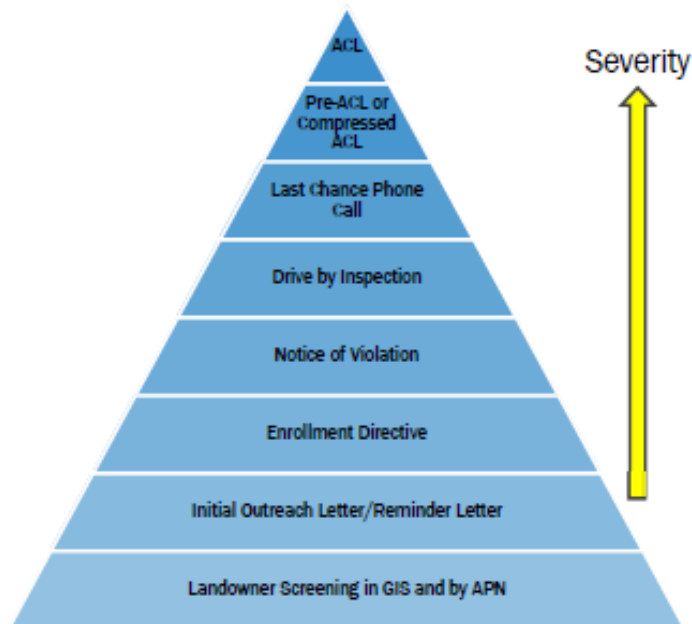
# FARM REPORTING CROP YEAR 2023

- Final results: 99% of growers completed their Farm Reporting
- That means one member did not complete the farm reporting.
- The Regional Board (RB) has sent this member a certified letter - Notice of Violation for failure to comply with program requirements.
- Just remember if FARM REPORTING is not COMPLETE = RED FLAG for an RB SITE VISIT (One member for crop year 2022 had a site visit)



# Regional Board Enforcement Efforts

## Progressive Enforcement for Non-Enrolled APNs



## Late Reporters



## Dropped Members



ACL=Administrative Civil Liabilities

# FARM REPORTING CROP YEAR 2024

- No changes to the reporting requirements for crop year 2023
- A detailed farm reporting letter will be emailed on December 1<sup>st</sup>

## Farm reporting is due: February 15, 2025

- Late fees apply after 02/15/2025 - Late Reporting Fees are 20% of membership fees or \$100 whichever is more.
- If farm reporting is not received or is incomplete by July 1<sup>st</sup>, the member is placed on an enforcement list that the Coalition is required to give to the Regional Board.

# FARM REPORTING CROP YEAR 2024

Who has to complete farm reporting?

All members/landowners (or their reporters)

What if:

- Fallow?
- Nothing changed?
- Non-bearing?
- Failed crop?

All memberships report-No exceptions!

# Farm reporting checklist CROP YEAR 2024

Do not enter zero acres. All crops must have farmable acreage or you can enter Fallow, one of the three options.

- ☐ Fallow-No Water (Due to drought or allocation)
- ☐ Fallow-No Operator (Not farming the land unable to find tenant or tenant left with short notice, etc.)
- ☐ Fallow-In Transition (Orchard replacement, vineyard replacement, rotation of crops such as winter wheat, triticale, and other hays and grasses that are not irrigated.

If the land is irrigated anytime within 5 years, the parcel must remain enrolled with the farmable acreage. Enter Fallow-In transition. The system will keep the irrigated acreage for proper billing and the INMP Summary Report will not be required



# Farm reporting checklist CROP YEAR 2024

Nurseries are required to complete farm reporting

Also, market fresh produce, farmer's markets etc.

INMP Summary Report:

- Enter the number of containers or sellable units
- Enter lbs./acre of nitrogen used for yield unit.
- To read the letter from the Executive Officer of the Central Valley Water Quality Control Board about nurseries, contact Martha.

# Farm reporting checklist CROP YEAR 2024

INMP Summary Report: Accuracy matters!

If you do not have a yield you must enter a reason.

Dropdown:

- ✓ Non-bearing
- ✓ Crop failure (need notes)
- ✓ No yield (need notes)



Non-bearing vs. no or low yield: For zero or low yields a reason is needed in the notes.

- Types of notes: Frost, heat damage, flood damage, infestation, did not harvest due to cost etc.

# Farm reporting crop year 2024

- DMT – Data Management Tool

- Do you still have your login? If not, contact us ASAP.
- If you are a new member that did not report in crop year 2023, your login will be sent to you this reporting year.
- If you are an owner who has a reporter (tenant) complete your farm reporting, then they have a separate login.

VISIT: [dixonrcd.org/irrigated-lands](https://dixonrcd.org/irrigated-lands)

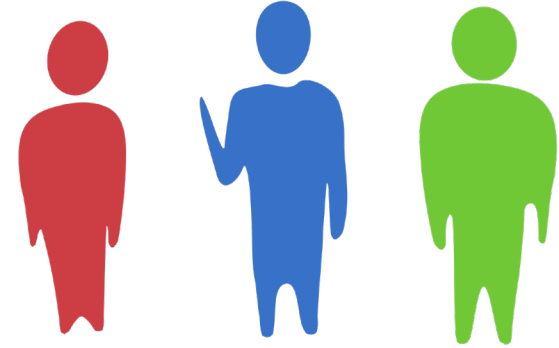
Click on the green button to take you to the login portal.



- Remember you can always make an office visit appointment Monday through Thursday with Martha to complete your farm reporting.

# Staff at Dixon RCD

- Kelly Huff, District Manager
  - Martha McKeen, Program Coordinator
  - Joanna Yac, Office Manager
- 
- SRCD Staff- We partner with the staff of Solano RCD throughout the year for technical assistance on local projects, field studies and education events.





# Board members

## DIXON RCD

- David Viguie
- Spencer Bei
- Eric Schene
- Daniel Jones
- Alexis Harvey
- Jim Campbell, Associate
- Leo Soukeris, Associate

Meetings: 2<sup>nd</sup> Wednesday at Noon

## SOLANO RCD

- Kurt Balasek
- Paul Lum
- Randi Thompson
- Kathie Stutz
- Chris Calvert
- Glenda Riddle
- Vacant

Meetings: 3<sup>rd</sup> Thursday at 5 pm

## ADVISORY Ad Hoc COMMITTEE

- Kurt Balasek
- Sam Beukelman
- Bruce Brazelton
- Paul Lum
- Cork McIsaac – Rep. for Sac Valley
- David Viguie
- Herb Wimmer
- Vacant

Meetings: once a year in May or June

**FINANCES**

# Invoicing Fiscal Year 2024



- Invoices were sent on October 3<sup>rd</sup> and due on December 3<sup>rd</sup>
- Member Fees are \$3.75 per irrigated acre... NO CHANGE from last year.
- A credit for Pasture with no nitrogen applied for the previous year was added to the invoice.
- Currently, we are at 61% PAID.
- Remember we take online CC and debit payments!
  - There is a 2.25% service fee to the user, not the Coalition.

# FISCAL YEAR 2024 budget recap

- FY 2024 actual ending fund balance = \$263,258, anticipated \$155,752
- Why such a large difference in ending balance?
  - Budgeted \$1.47 State fees, actual \$1.42 per/irr. acre
  - A positive net position of \$58,137
  - Used less staff time
  - Grant funds offset staffing cost
  - Large spike in interest income
  - Carryover from SVWQC of \$34,027 of the previous year

Dixon/Solano RCD Water Quality Coalition July 2023 - June 2024 Finances	
<b>Total Income</b>	<b>\$ 504,313.64</b>
Membership Fees (\$3.75/acre)	\$ 491,809.28
Interest	\$ 12,504.36
<b>Total Expenses</b>	<b>\$ 466,176.35</b>
State Board Fees (\$1.42 per irr/acre)	\$ 168,583.38
RCD Staff	\$ 111,162.50
RCD Direct Cost	\$ 11,762.98
Surface Water Monitoring	\$ 48,936.47
Groundwater Requirements	\$ 40,707.55
Reporting Requirements	\$ 37,169.95
SVWQC Fees	\$ 27,853.52
<b>Fund Balance - 06/2024 (Final)</b>	<b>\$ 263,258.29</b>



# FISCAL YEAR 2025 budget planning

Dixon/Solano RCD Water Quality Coalition July 2024 - June 2025 Finances	
<b>Budgeted Total Income</b>	<b>\$ 449,161.20</b>
Membership Fees (\$3.75/acre)	\$ 445,061.20
Interest	\$ 4,100.00
<b>Budgeted Total Expenses</b>	<b>\$ 551,007.03</b>
State Board Fees (\$1.49 per irr/acre)	\$ 174,292.20
RCD Staff	\$ 139,416.00
RCD Direct Cost	\$ 5,850.00
Surface Water Monitoring	\$ 105,245.83
Groundwater Requirements	\$ 59,044.00
Reporting Requirements	\$ 33,246.00
SVWQC Fees	\$ 33,913.00
<b>Fund Balance - 06/2025 (Prelim)</b>	<b>\$ 161,412.46</b>

Our budget was approved in June 2024

FY 2025 is an assessment year for water quality monitoring\*

- Budgeted income \$449,161
- Budgeted expenses \$551,007
- \*SW monitoring more than doubled to \$105,246 in FY 2025 due to an assessment year and increased monitoring when in a management plan for pyrethroid exceedances
- Net position of -\$101,846 with a projected ending balance for June 30, 2025, is \$161,412
- Minimum fund balance reserves of \$100,000
- Unallocated funds of \$61,412
  - No change - \$3.75 irrigated/acre fee this year
- State fees are \$1.49

For details about the water quality budget contact Martha at 707-678-1655 x103

**SURFACE WATER**



**ZDDIX**  
Special Project  
Monitoring Site  
Not in use at this time

**SSLIB**  
Integrative  
Monitoring Site

**UCBRD**  
Representative  
Monitoring Site  
(Management  
Plan for  
sediment  
toxicity)

# SSLIB – Shag Slough at Liberty Island Bridge

- SSLIB was an integrated monitoring site.
- The monitoring site is no longer accessible due to the Lookout Slough Tidal Habitat Project. The bridge is set for demo by the DWR in Spring 2025.
- DRCD Staff toured the area on Shag Slough with DWR and SVWQC staff looking for a new site.
- As of today, we have not found a new suitable integrated site for water quality monitoring it is in the works.



# Sediment toxicity management plan

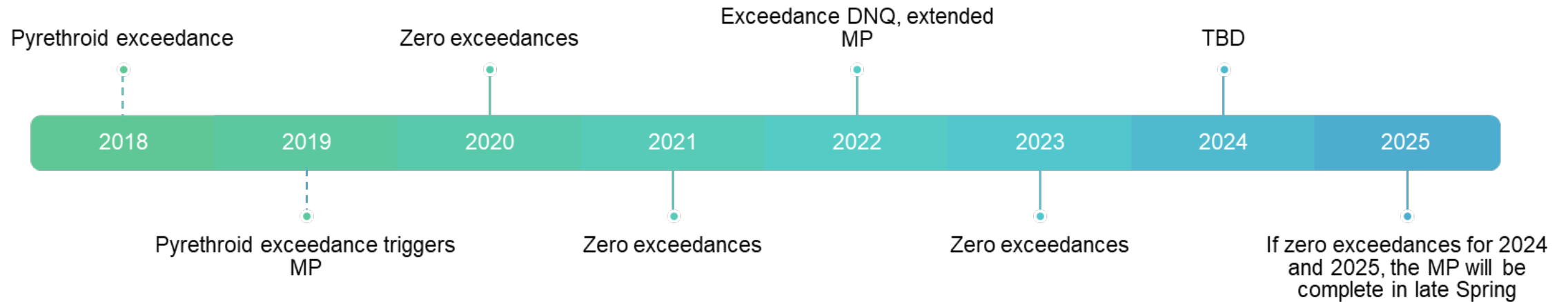
## Ulatis Creek at Brown Road Monitoring Site

- Lambda-cyhalothrin and bifenthrin were found
- Date of last exceedance: April 21, 2022
- Extended the Sediment Toxicity Management Plan for 3 years.
- No exceedance in 2023 and
- 2024 TBD

Follow BMP-best management practices while using pyrethroids or any pesticide.



# Timeline of the active Management Plan for Sediment Toxicity at Ulatis Creek/Brown Road (UCBRD) monitoring site



# Surface water MPIR\*

\*Management Plan Implementation Report - It is not the MPIR in the DMT - data management tool-online reporting (that is focused on GW)

- It is required and triggered by our management plan for sediment toxicity
- The SW MPIR is specific to only tomato, alfalfa, barley and pear growers that use lambda-cyhalothrin and bifenthrin
- It is a 13-question survey about irrigation and sediment run-off practices
- Required for specific growers for fall 2020-2025 and ends when the management plan is complete.

# Water quality monitoring-water column

- On June 23, 2021, there was a water column toxicity exceedance at the Ulatis Creek monitoring site, where we have an active management plan for sediment toxicity.

Update since then...

As of October 2024, we have not had another water column exceedance at the site.

- Thank you growers/applicators for using BMP when applying pyrethroid pesticides.

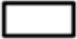



**GROUNDWATER**

# WATER USAGE IS SOLANO COUNTY






- ✓ CA Waterboard's online database "eWRIMS"
- ✓ County Records from well permits
- ✓ Data from the DMT, growers agreed to shared with GSA

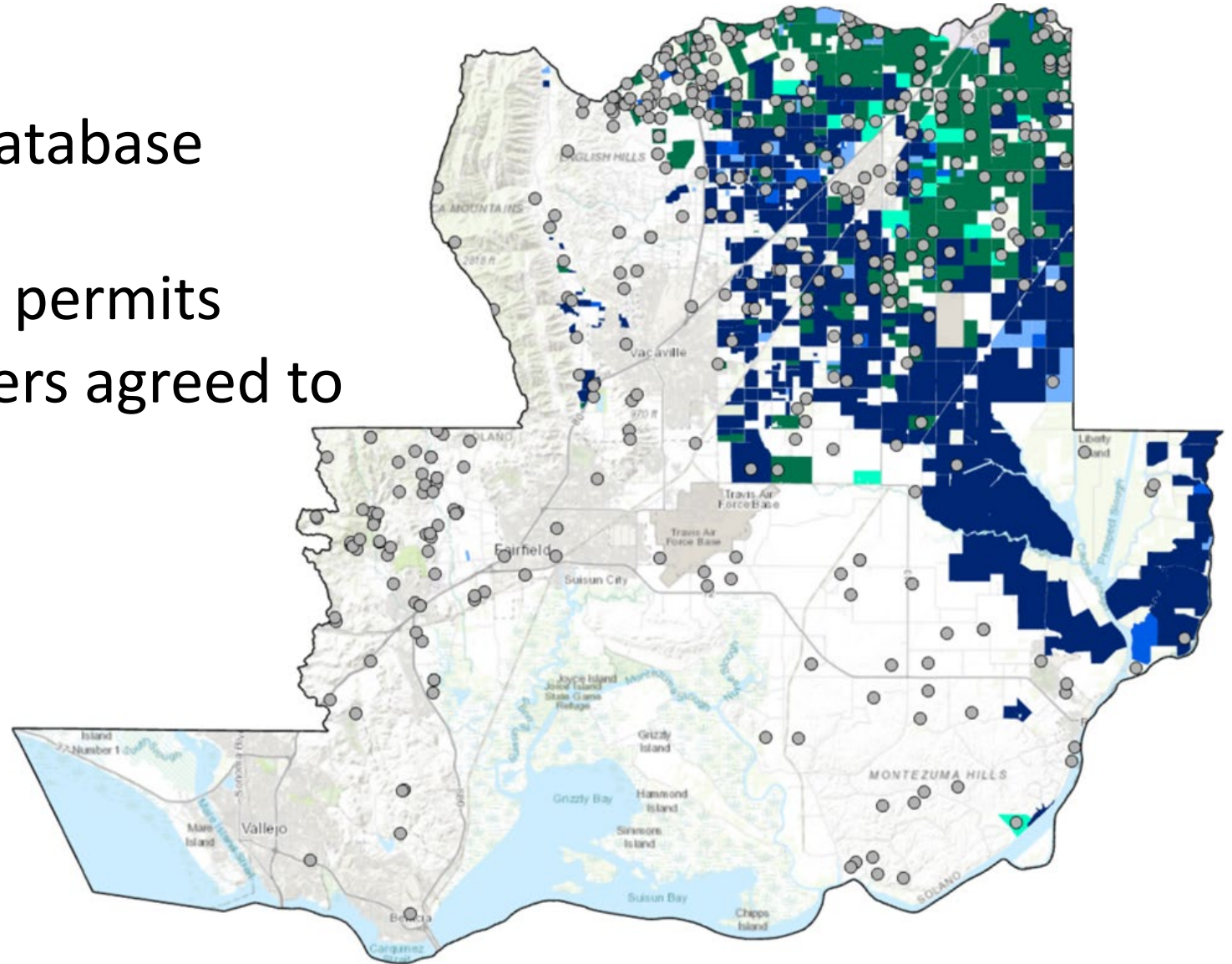
## Legend

-  Solano County
-  Located Agricultural Wells

## **Irrigated Parcels**

### **ILRP Status**

-  Irrigated
-  Predominantly Groundwater
-  Surface and Groundwater
-  Predominantly Surface Water
-  Surface Water

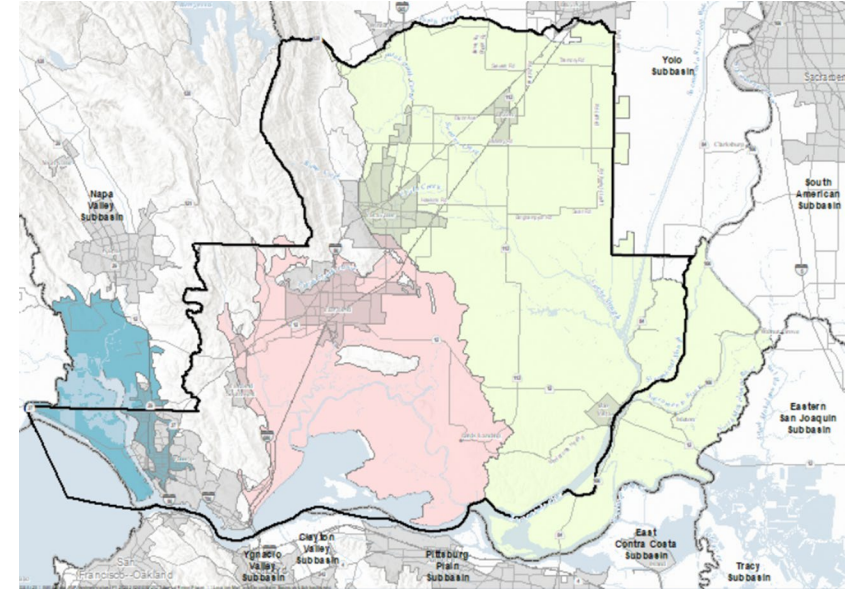


Information courtesy of LSCE

# WATER USAGE IS SOLANO COUNTY

## Importance of gathering data:

- Improve understanding of water use
- Refine modeling and water budget estimates
- Identifying areas of higher well densities for additional monitoring (Water levels and Water quality)
- Support refinements to GSA fees
- Provide foundational information for ongoing tracking of active wells and SW diversions



# Drinking water wells monitoring

- Parcels enrolled in the Coalition with active drinking water wells must have the water tested for nitrates by December 31, 2024
- For more information, visit:

[https://www.waterboards.ca.gov/centralvalley/water\\_issues/irrigated\\_lands/drinking\\_water/](https://www.waterboards.ca.gov/centralvalley/water_issues/irrigated_lands/drinking_water/)

Or

<https://www.dixonrwd.org/drinking-water-well-monitoring>



## Drinking Water Well Sampling Guidelines:

After three years of consecutive samples...

- If all results are less than 8mg/L, sampling is reduced to every five years;
- If sample results are between 8mg/L - 10mg/L, continue to sample annually;
- If the sample exceeds 10mg/L, notification is required to the user and Regional Board, then no further sampling is required.

(Safe drinking levels are 10mg/L or less, nitrate + nitrite as nitrogen.)



# CV Salts – Nitrate Control Program

- Central Valley Water and the State Water Boards approved the CV Salts and Nitrate Control (Central Valley Salinity Alternatives for Long-term Sustainability) Program.
- Areas of California have been prioritized based on the water quality.
- This program is separate from the Irrigated Lands Program.
- Goal: To provide safe drinking water to residents in areas where nitrogen exceeds the drinking water standards.
- Prioritized areas required to create a plan to manage nitrate discharges to reduce or eliminate impacts to groundwater.

# CV Salts

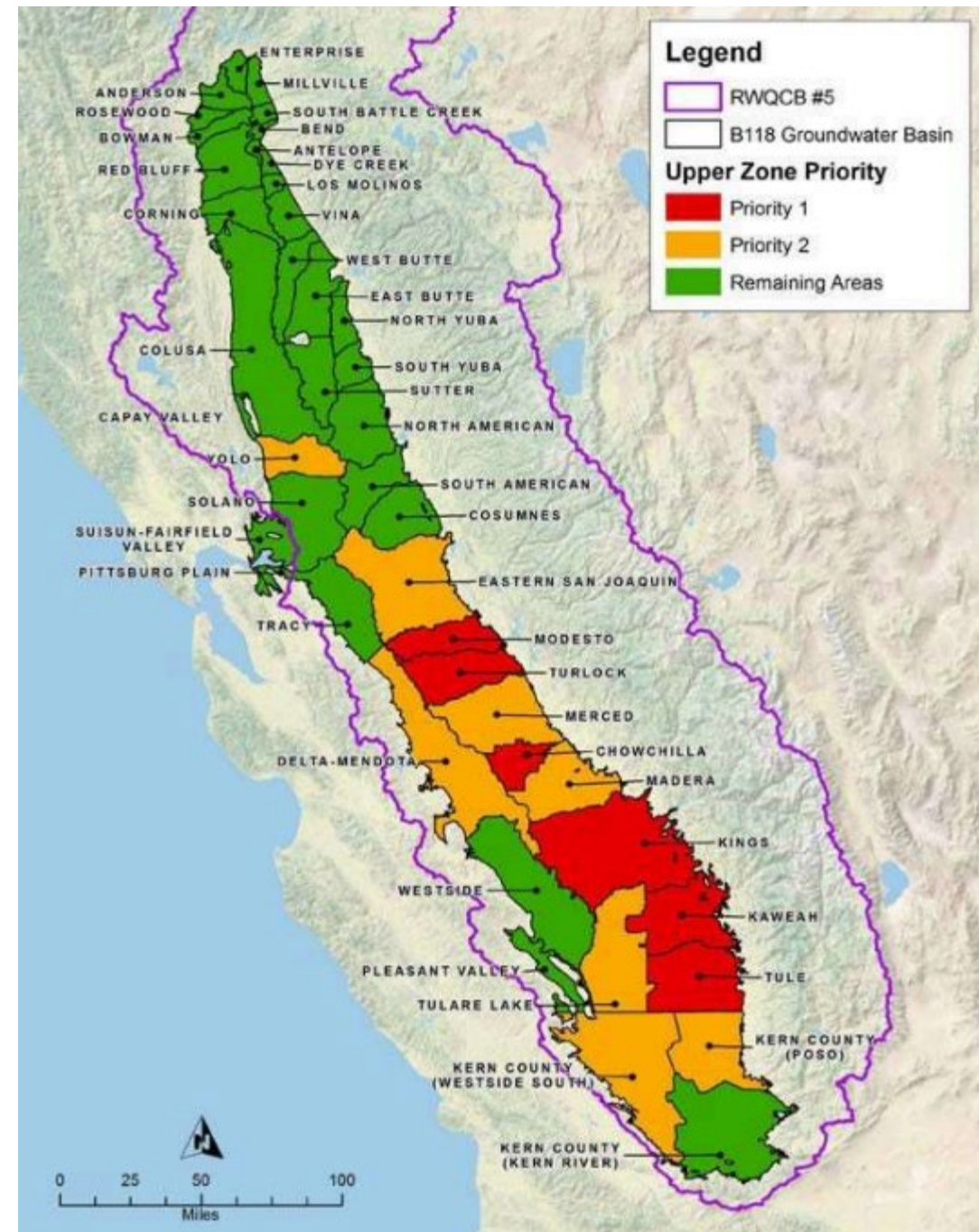
Priority 1 Area (Red) Notice to Comply - May 29, 2020

Priority 2 Area (Gold) Notice to Comply - December 29, 2023

Remaining Areas (Green) Not prioritized

- Solano County is not prioritized at this time.  
"Implementation to be phased in if needed at a later date."
- Yolo County is in a Priority 2 basin.

Full article can be found in the Water Quality Update Newsletter – October 2024.



# Wellhead protection

## Protect groundwater by providing wellhead protection

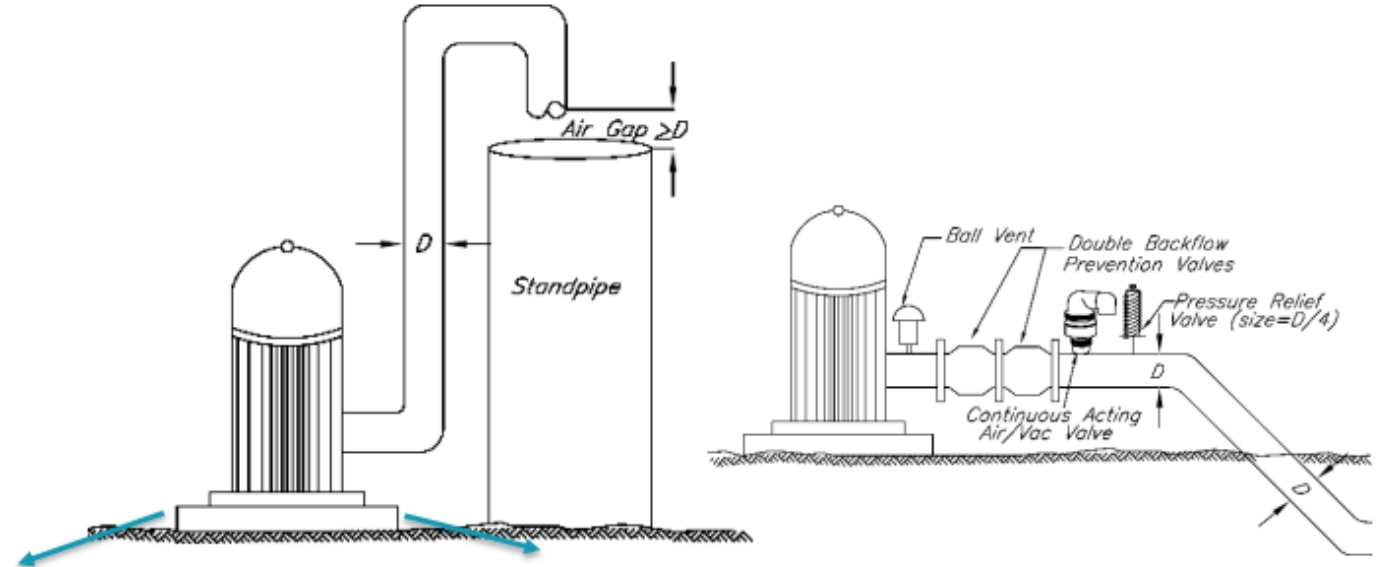
- Ground sloped away from wellhead
- Standing water avoided around wellhead
- Good housekeeping practices
- Air-gap (non-pressurized systems)
- Backflow prevention valve/check valve
- Cement (concrete) pad

## Abandoned Wells

- Properly decommissioning a well

Well ID (A unique name of your choice)	Wellhead Protection Practices					
	Ground Sloped Away from Wellhead	Standing water avoided around wellhead	Good Housekeeping Practices*	Air Gap (for non-pressurized systems)	Backflow Preventive / Check Valve	Concrete <del>Cement</del> Pad

\*Good housekeeping practices include keeping the area surrounding the wellhead clean of trash, debris and any empty containers.



Well ID (A unique name of your choice)	Abandoned Well Practices			
	If abandoned, year abandoned	Destroyed – certified by county	Destroyed by licensed professional	Destroyed - Unknown method



Picture courtesy of NRCS

# Wellhead protection

- This information is section 2 of the Farm Evaluation Survey completed by growers every five years. The next time it will be completed is the 2025 crop year.

## Step by Step Instructions

The Farm Evaluation has 4 components:

Section 1: Whole Farm Evaluation

Section 2: Irrigation Well Information

Section 3: Sediment & Erosion Control Practices

Section 4: Farm Map(s)

**Step 2: Section 2:** Complete the Wellhead Protection Practices table and/or Abandoned Well Practices table for all irrigation and abandoned wells on your property. Give each well a unique identifier (Well ID) and list them in the first column of the table. Complete the table by marking which Wellhead Protection Practices or Abandoned Well Practices apply to each of your wells. Mark the location of all in-use wells (irrigation and drinking water supply wells), abandoned wells, and off farm surface water discharge points on a Farm Map. Wells should be marked with the Well ID noted on the Farm Evaluation. Keep the map in your files (do not return to the Coalition). The map(s) with well identifiers must be produced if you have a Regional Water Board compliance inspection. *If your land does not contain irrigation wells or abandoned wells, check the appropriate box above the Wellhead Protection Practices table and/or the Abandoned Well Practices Table.*

## Section 2 – Irrigation Well and Abandoned Well Information

Member Name: \_\_\_\_\_ Coalition Member ID#: \_\_\_\_\_

- Irrigation Wells:** Create a unique Well ID for each irrigation well. For each well, fill in the table below with the Well ID and mark an "X" under the practices that apply to the individual well. Mark the location of your wells on the provided Farm Map(s) or your own farm map using the unique Well ID.

<input type="checkbox"/> Check this box if you have no irrigation wells on your parcel(s).						
Well ID (A unique name of your choice)	Wellhead Protection Practices					
	Ground Sloped Away from Wellhead	Standing water avoided around wellhead	Good Housekeeping Practices*	Air Gap (for non-pressurized systems)	Backflow Preventive / Check Valve	Cement Pad

\*Good housekeeping practices include keeping the area surrounding the wellhead clean of trash, debris and any empty containers.

Comments: \_\_\_\_\_

- Abandoned Wells:** Create a unique Well ID for each abandoned well. Mark the location of your wells on the provided Farm Map(s) or your own farm map using the unique Well ID. Indicate the year the well was abandoned (write "UNK" if the year is unknown; approximation is okay) and mark how the well was destroyed with an "X" under the appropriate practice.

<input type="checkbox"/> Check this box if you have no abandoned wells on your parcel(s).				
Well ID (A unique name of your choice)	Abandoned Well Practices			
	If abandoned, year abandoned	Destroyed – certified by county	Destroyed by licensed professional	Destroyed - Unknown method

Comments: \_\_\_\_\_



# INMP WORKSHEET VS. INMP SUMMARY REPORT

## (IRRIGATION AND NITROGEN MANAGEMENT PLAN)

### INMP WORKSHEET

- Is a tool required for all crops with the exception of Pasture – No N applied
- Fill out pre-harvest by March 1st - what is expected for the season
- Complete after harvest - actual totals, be accurate!
- Stays on-farm, keep with farm reports
- Enter this data into the DMT – data management tool, the online data system
- Certify the worksheet if the parcel is in an HVA - high vulnerability area for nitrogen

IRRIGATION AND NITROGEN MANAGEMENT PLAN (INMP) WORKSHEET

IRRIGATION AND NITROGEN MANAGEMENT PLAN (INMP) WORKSHEET

Member ID: \_\_\_\_\_ INMP Field or MU: \_\_\_\_\_ Crop: \_\_\_\_\_ Total Acres: \_\_\_\_\_

IRRIGATION MANAGEMENT				
<b>1. Irrigation Method*</b> (check one for Primary; if applicable, check one for Secondary)  Primary Secondary <input type="checkbox"/> <input type="checkbox"/> Drip <input type="checkbox"/> <input type="checkbox"/> Micro Sprinkler <input type="checkbox"/> <input type="checkbox"/> Furrow <input type="checkbox"/> <input type="checkbox"/> Sprinkler <input type="checkbox"/> <input type="checkbox"/> Border Strip <input type="checkbox"/> <input type="checkbox"/> Flood		<b>Pre-Season Planning</b>		
		<b>2. Crop Evapotranspiration</b> (ET, inches)		
		<b>3. Anticipated Crop Irrigation</b> (inches)		
		<b>4. Irrigation Water N Concentration</b> (ppm or mg/L, as NO <sub>3</sub> -N)		
<b>5. Irrigation Efficiency Practices*</b> (Check all that apply)  <input type="checkbox"/> Laser Leveling <input type="checkbox"/> Use of ET in scheduling irrigations <input type="checkbox"/> Water application schedule to need <input type="checkbox"/> Use of moisture probe (e.g. tensiometer) <input type="checkbox"/> Soil Moisture Neutron Probe <input type="checkbox"/> Pressure Bomb <input type="checkbox"/> Other _____				
HARVEST / YIELD INFORMATION				
Harvest / Yield Information		Expected (A)	Actual (B)	
<b>6. Production Unit</b> (lbs, tons, etc.)				
		<b>7. Harvested Yield*</b>		
NITROGEN MANAGEMENT				
<b>8. Nitrogen Efficiency Practices*</b> (Check all that apply)  <input type="checkbox"/> Split Fertilizer Applications <input type="checkbox"/> Irrigation Water N Testing <input type="checkbox"/> Soil Testing <input type="checkbox"/> Tissue/Petiole Testing <input type="checkbox"/> Fertigation <input type="checkbox"/> Foliar N Application <input type="checkbox"/> Cover Crops <input type="checkbox"/> Variable Rate Applications using GPS <input type="checkbox"/> Other: _____ <input type="checkbox"/> Other: _____		<b>Nitrogen Sources</b>	Recommended/ Planned N (A)	Actual N (B)
		<b>9. Soil – Available N in Root Zone</b> (Annualized, lbs/ac)		
		<b>10. N in Irrigation Water*</b> (Annualized, lbs/ac)		
		<b>11. Organic Amendments*</b> (Manure/Compost/Other, lbs/ac estimate)		
		<b>12. Dry/Liquid Fertilizer N*</b> (lbs/ac)		
		<b>13. Foliar Fertilizer N*</b> (lbs/ac)		
		<b>14. TOTAL NITROGEN</b> (lbs/ac)		

\* A secondary irrigation system could be used for crop germination, frost protection, crop cooling, etc.  
\* (Bold Text) Data to be reported to the Coalition on the INMP Summary Report, based on Actual Yield and Actual N.

Plan Certifier Initials

# INMP WORKSHEET VS. INMP SUMMARY REPORT

## (IRRIGATION AND NITROGEN MANAGEMENT PLAN)

### INMP SUMMARY REPORT (SR)

- Required for all crops with the exception of Pasture – No N applied
- It is located in the DMT- data management tool, the online system for farm reporting
- Enter the data from the INMP Worksheet into the DMT, INMP SR
- Print or download report and keep with important farm paperwork for 10 years.

IRRIGATION AND NITROGEN MANAGEMENT PLAN (INMP) SUMMARY REPORT													
IRRIGATION AND NITROGEN MANAGEMENT PLAN (INMP) SUMMARY REPORT													
Refer to your Irrigation and Nitrogen Management Plan (INMP) Worksheet and Parcel Inventory for information to complete an INMP Summary Report for each field or Management Unit.													
<b>STEP 1: GENERAL INFORMATION</b>			<b>STEP 2: OUTLIER NOTIFICATION RECEIPT</b>				<b>STEP 3: INMP CERTIFICATION METHOD</b>						
Member ID: Forms Completed By: Crop Year (Harvested): 2020 Submittal Date: 2020-12-08			On (Date) <u>2020-11-01</u> , the Coalition provided information about this membership's nitrogen efficiency for the previous crop year and identified management units that were considered outliers compared to other Coalition members growing the same crop.  Please check the box below to acknowledge your outlier status. <input checked="" type="checkbox"/>				<input type="checkbox"/> Certified INMP Specialist (e.g. certified crop adviser who has completed the CDFA training program) <input checked="" type="checkbox"/> Self-Certified (CDFA training program) <input type="checkbox"/> Self-Certified (follows NRCS or UC Cooperative Extension site-specific recommendations) <input type="checkbox"/> Self-Certified (No fertilizers applied) <input type="checkbox"/> My parcels are low vulnerability and do not require certification						
<b>STEP 4: INMP SUMMARY REPORT</b>													
Complete the table below for each field or management unit for this membership. All values should be on a per acre basis.													
2020 INMP Management Unit	Crop Type	Total Irrigated Acres	N in Dry / Liquid Fertilizers (lbs/acre)	N in Irrigation Water (lbs/acre)	N in Organic Amendments (lbs/acre)	N in Foliar Fertilizers (lbs/acre)	Available N Carryover in Soil (lbs/acre)	Yield/acre	Yield Unit	Yield Basis for Nut Crops & Prunes Only	If Zero Yield, Select Option Below	Notes	INMP Completed
1	ALMOND	35.60	57.00	69.00	0.00	0.00		1594.00	LBS	Kernel/Meat	N/A		Completed

# INMP WORKSHEET VS. INMP SUMMARY REPORT (IRRIGATION AND NITROGEN MANAGEMENT PLAN)

IRRIGATION AND NITROGEN MANAGEMENT PLAN (INMP) WORKSHEET

Member ID: \_\_\_\_\_ INMP Field or MU: \_\_\_\_\_ Crop: \_\_\_\_\_ Total Acres: \_\_\_\_\_

IRRIGATION MANAGEMENT			
1. Irrigation Method* (check one for Primary; if applicable, check one for Secondary)		Pre-Season Planning	
Primary	Secondary	2. Crop Evapotranspiration (ET, inches)	
<input type="checkbox"/>	<input type="checkbox"/>	3. Anticipated Crop Irrigation (inches)	
<input type="checkbox"/>	<input type="checkbox"/>	4. Irrigation Water N Concentration (ppm or mg/L, as NO <sub>3</sub> -N)	
<input type="checkbox"/>	<input type="checkbox"/>		
<input type="checkbox"/>	<input type="checkbox"/>		
<input type="checkbox"/>	<input type="checkbox"/>		
<input type="checkbox"/>	<input type="checkbox"/>		
5. Irrigation Efficiency Practices* (Check all that apply)			
<input type="checkbox"/> Laser Leveling	<input type="checkbox"/> Soil Moisture Neutron Probe		
<input type="checkbox"/> Use of ET in scheduling irrigations	<input type="checkbox"/> Pressure Bomb		
<input type="checkbox"/> Water application schedule to need	<input type="checkbox"/> Other: _____		
<input type="checkbox"/> Use of moisture probe (e.g. tensiometer)	<input type="checkbox"/> Other: _____		
HARVEST / YIELD INFORMATION			
Harvest / Yield Information		Expected (A)	Actual (B)
6. Production Unit (lbs, tons, etc.)	7. Harvested Yield*		
NITROGEN MANAGEMENT			
8. Nitrogen Efficiency Practices* (Check all that apply)		Recommended/Planned N (A)	Actual N (B)
<input type="checkbox"/> Split Fertilizer Applications	9. Soil – Available N in Root Zone (Annualized, lbs/ac)		
<input type="checkbox"/> Irrigation Water N Testing	10. N in Irrigation Water* (Annualized, lbs/ac)		
<input type="checkbox"/> Soil Testing	11. Organic Amendments* (Manure/Compost/Other, lbs/ac estimate)		
<input type="checkbox"/> Tissue/Petiole Testing	12. Dry/Liquid Fertilizer N* (lbs/ac)		
<input type="checkbox"/> Fertilization	13. Foliar Fertilizer N* (lbs/ac)		
<input type="checkbox"/> Foliar N Application	14. TOTAL NITROGEN (lbs/ac)		
<input type="checkbox"/> Cover Crops			
<input type="checkbox"/> Variable Rate Applications using GPS			
Other: _____			
Other: _____			

Plan Fertilizer Initials: \_\_\_\_\_

## INMP WORKSHEET

Required for all crops with the exception of Pasture – No N applied. Paper or downloaded worksheet to complete preharvest and harvest data. Stays on-farm!

Data from worksheet

BOTH FORMS ARE A REQUIREMENT !

IRRIGATION AND NITROGEN MANAGEMENT PLAN (INMP) SUMMARY REPORT

Refer to your Irrigation and Nitrogen Management Plan (INMP) Worksheet and Parcel Inventory for information to complete an INMP Summary. Report for each field or Management Unit.

STEP 1: GENERAL INFORMATION	STEP 2: OUTLIER NOTIFICATION RECEIPT	STEP 3: INMP CERTIFICATION METHOD											
Member ID: _____ Crops Completed By: _____ Harvested: 2020 Submitted: 2020-12-08	On (Date) <u>2020-11-01</u> , the Coalition provided information about this membership's nitrogen efficiency for the previous crop year and identified management units that were considered outliers compared to other Coalition members growing the same crop.  Please check the box below to acknowledge your outlier status. <input checked="" type="checkbox"/>	<input type="checkbox"/> Certified INMP Specialist (e.g. certified crop adviser who has completed the CDFA training program) <input checked="" type="checkbox"/> Self-Certified (CDFA training program) <input type="checkbox"/> Self-Certified (follows NRCS or UC Cooperative Extension site-specific recommendations) <input type="checkbox"/> Self-Certified (No fertilizers applied) <input type="checkbox"/> My parcels are low vulnerability and do not require certification											
STEP 4: INMP SUMMARY REPORT													
Complete the table below for each field or management unit for this membership. All values should be on a per acre basis.													
2020 INMP Management Unit	Crop Type	Total Irrigated Acres	N in Dry/Liquid Fertilizers (lbs/acre)	N in Irrigation Water (lbs/acre)	N in Organic Amendments (lbs/acre)	N in Foliar Fertilizers (lbs/acre)	Available N Carried over in Soil (lbs/acre)	Yield/acre	Yield Unit	Yield Basis for Nut Crops & Prunes Only	If Zero Yield, Select Option Below	Notes	INMP Completed
1	ALMOND	35.60	57.00	69.00	0.00	0.00		1594.00	LBS	Kernel/Meal	N/A		Completed

## INMP SUMMARY REPORT

Required for all crops with the exception of Pasture – No N applied located in the DMT online reporting system.

# Groundwater protection targets (GWPT)

- Growers' data is one piece of the puzzle to calculate the GWPT
- The GWPT builds upon previous efforts from the Coalitions to quantify current township-level nitrogen loading at the root zone based on grower-reported Irrigation and Nitrogen Management Plan Summary Report data.
- New GWP targets report has been submitted to the Regional Board for approval.
- The thresholds for outliers will most likely change for crop year 2025 in the Grower Feedback Reports
- The proposed targets goals for the application of nitrogen are the recommended, nonregulatory thresholds for crops, at this point.
- The GWPT report and thresholds will be updated every five years.

# INMP SR – Irrigation and Nitrogen management plan summary report

- The first Groundwater Protection Targets were calculated by using grower INMP SR data from 2017-2020 as part of the overall nitrogen applied minus nitrogen removed (A-R) for townships.

So...

- Please be accurate in your reporting.

IRRIGATION AND NITROGEN MANAGEMENT PLAN (INMP) WORKSHEET

IRRIGATION AND NITROGEN MANAGEMENT PLAN (INMP) WORKSHEET

Member ID: \_\_\_\_\_ INMP Field or MU: \_\_\_\_\_ Crop: \_\_\_\_\_ Total Acres: \_\_\_\_\_

1. Irrigation Method* (check one for Primary, if applicable, check one for Secondary)		2. Crop Evapotranspiration (ET, inches)		3. Anticipated Crop Irrigation (inches)		4. Irrigation Water N Concentration (ppm or mg/L, as H <sub>2</sub> O-N)	
Primary	<input type="checkbox"/> Drip <input type="checkbox"/> Micro Sprinkler <input type="checkbox"/> Furrow <input type="checkbox"/> Sprinkler <input type="checkbox"/> Border Strip <input type="checkbox"/> Flood						
Secondary	<input type="checkbox"/>						

5. Irrigation Efficiency Practices\* (Check all that apply)

☐ Laser Leveling ☐ Soil Moisture Neutron Probe  
☐ Use of ET in scheduling irrigations ☐ Pressure Bomb  
☐ Water application schedule to need ☐ Other: \_\_\_\_\_  
☐ Use of moisture probe (e.g. tensiometer) ☐ Other: \_\_\_\_\_

6. Production Unit (bs, tons, etc.)		7. Harvested Yield*		Expected (A)		Actual (B)	

8. Nitrogen Efficiency Practices\* (Check all that apply)

☐ Split Fertilizer Applications  
☐ Irrigation Water N Testing  
☐ Soil Testing  
☐ Tissue/Petiole Testing  
☐ Fertilization  
☐ Foliar N Application  
☐ Cover Crops  
☐ Variable Rate Applications using GPS  
☐ Other: \_\_\_\_\_  
☐ Other: \_\_\_\_\_

9. Soil – Available N in Root Zone (Annualized, lbs/ac)		10. N in Irrigation Water* (Annualized, lbs/ac)		11. Organic Amendments* (Manure/Compost/Other, lbs/ac estimate)		12. Dry/Liquid Fertilizer N* (lbs/ac)		13. Foliar Fertilizer N* (lbs/ac)		14. TOTAL NITROGEN (lbs/ac)	

IRRIGATION AND NITROGEN MANAGEMENT PLAN (INMP) SUMMARY REPORT

Refer to your Irrigation and Nitrogen Management Plan (INMP) Worksheet and Parcel Inventory for information to complete an INMP Summary Report for each field or Management Unit.

STEP 1: GENERAL INFORMATION		STEP 2: OUTLIER NOTIFICATION RECEIPT		STEP 3: INMP CERTIFICATION METHOD	
Member ID:		On (Date) 2020-11-01, the Coalition provided information about this membership's nitrogen efficiency for the previous crop year and identified management units that were considered outliers compared to other Coalition members growing the same crop.		<input type="checkbox"/> Certified INMP Specialist (e.g. certified crop adviser who has completed the CDFA training program)	
Forms Completed By:		Please check the box below to acknowledge your outlier status. <input checked="" type="checkbox"/>		<input checked="" type="checkbox"/> Self-Certified (CDFA training program)	
Crop Year (Harvested): 2020				<input type="checkbox"/> Self-Certified (follows NRCS or UC Cooperative Extension site-specific recommendations)	
Submit Date: 2020-12-08				<input type="checkbox"/> Self-Certified (No fertilizers applied)	
				<input type="checkbox"/> My parcels are low vulnerability and do not require certification	

STEP 4: INMP SUMMARY REPORT

Complete the table below for each field or management unit for this membership. All values should be on a per acre basis.

2020 INMP Management Unit	Crop Type	Total Irrigated Acres	N in Dry/Liquid Fertilizers (lbs/a)	N in Irrigation Water (lbs/a)	N in Organic Amendments (lbs/a)	N in Foliar Fertilizers (lbs/a)	Available N Carriers in Soil (lbs/a)	Yield (lbs/a)	Yield Unit	Yield Basis for Nut Crops & Prunes Only	If Zero Yield, Select Option Below	Notes	INMP Completed
1	ALMOND	35.60	57.00	68.00	0.00	0.00		1594.00	LBS	Kernel/Meat	N/A		Completed



# Groundwater workshop\*

WHEN: Thursday, January 30, 2025

TIME: 9:00 am – 12:30 pm

WHERE: Legion Hall Dixon, CA

The third annual groundwater meeting with local groundwater experts to present interesting information on the topic. Details about registration is coming soon.

Log it into your calendar!

\*We will apply for CDFA INMP CEUs



**SAVE  
THE  
DATE**

# Q & A – QUESTIONS AND ANSWERS



Any questions or comments?

THANK YOU FOR ATTENDING!