

2022 CROP YEAR FARM REPORTING — DUE DATE FEBRUARY 15, 2023

INMP Worksheet—The worksheet is for planning and actuals of irrigation practices and nitrogen usage. The PARCELS page in the DMT (online reporting tool) identifies HVA - high vulnerability areas for parcels that must have the INMP worksheet certified. (Exception is pasture that does not apply external nitrogen). Online INMP self-certification training for Growers now available at: <https://www.cdfa.ca.gov/is/ffldrs/frep/training.html#grower>
Please do not send the INMP worksheet to us. The worksheet **stays on-farm** and is used for data entry into the DMT.

Enter in the Data Management Tool (DMT):

- INMP SR—Irrigation Nitrogen Management Plan Summary Report
- GW MPIR—Groundwater Management Plan Implementation Report—Additional irrigation management questions related to distribution uniformity and efficiency that have been proven to be major factors in N leaching potential and are not included in the INMP SR.
- EDUCATION—Annual education. www.dixonrcd.org/workshops-events

Visit: dixonrcd.org/irrigated-lands, click on the green DMT button. To make a farm reporting appointment and/or to get your DMT login, contact, Martha McKeen (707) 678-1655 ext.103 or martha-mckeen@dixonrcd.org

Reporting notifications will be sent in late-November/early-December. Please do not wait until the last minute to complete your farm reporting! Even if there are no changes from last year, **ALL MEMBERS** (or their representatives) are required to “attend” an education event and complete annual farm reporting.

Para ayuda en español, por favor comuníquese con Joanna al 707-678-1655 x100 o joanna-yac@dixonrcd.org



Get **Public Safety** notification emails by signing up for an emergency alert system in Solano County at: <https://member.everbridge.net/453003085614570/login>

<p>Kelly Huff District Manager, Dixon RCD kelly-huff@dixonrcd.org</p> <p>Chris Rose Executive Director, Solano RCD</p> <p>Martha McKeen Program Coordinator, Dixon RCD martha-mckeen@dixonrcd.org (707) 678 -1655 x103</p> <p>Dixon/Solano Resource Conservation District Water Quality Coalition</p> <p>1170 N. Lincoln Street, Suite 110 Dixon, CA 95620 (707) 678 -1655</p> <p>dixonrcd.org/irrigated-lands</p>	<p>SOLANO RCD BOARD</p> <p>Kurt Balasek Paul Lum Darrell Hill Randi Thompson Terry Riddle Kathie Stutz Chris Calvert Glenda Riddle, Associate</p> <p>DIXON RCD BOARD</p> <p>David Viguie Sam Beukelman Spencer Bei Eric Schene Daniel Jones Jim Campbell, Associate Leo Soukeris, Associate</p> <p>COALITION ADVISORY COMMITTEE</p> <p>Bruce Brazelton Kurt Balasek Cork Mclsaac Paul Lum Rick Martinez Spencer Bei David Viguie</p>
--	---

Dixon/Solano RCD Water Quality Coalition July 2021 - June 2022 Finances	
Total Income	\$ 452,558.93
Membership Fees (\$3.75/acre)	\$ 451,493.47
Interest	\$ 1,065.46
Total Expenses	\$ 521,557.36
RCD Staff	\$ 137,013.88
RCD Direct Cost	\$ 8,956.02
Surface Water Monitoring	\$ 95,678.03
Groundwater/Reporting Requirements	\$ 106,575.62
SVWQC Fees	\$ 26,294.17
State Board Fees (\$1.29 per irr/acre)	\$ 147,039.64
Fund Balance - 06/2022	\$ 192,193.30
Dixon/Solano RCD Water Quality Coalition July 2022 - June 2023 Finances	
Budgeted Income	\$ 447,297.12
Membership Fees (\$3.75/acre)	\$ 445,797.12
Interest	\$ 1,500.00
Budgeted Expenses	\$ 493,343.94
RCD Staff	\$ 146,161.00
RCD Direct Cost	\$ 8,630.00
Surface Water Monitoring	\$ 73,570.00
Groundwater/Reporting Requirements	\$ 80,744.00
SVWQC Fees	\$ 26,500.00
State Board Fees (\$1.35 per irr/acre)	\$ 157,738.94
Fund Balance - 06/2023 (Projected)	\$ 146,146.48

(Biennial financial audits of Dixon/Solano RCD Water Quality Coalition are posted on our website at <https://www.dixonrcd.org/financial>)



WATER QUALITY UPDATE

DIXON/SOLANO RCD WATER QUALITY COALITION — OCTOBER 2022

Solano Groundwater Sustainability

Dixon and Solano Resource Conservation Districts and the Dixon/Solano RCD Water Quality Coalition have been and will continue to be actively involved in groundwater sustainability planning in the Solano Subbasin. After careful consideration and discussion, the Dixon/Solano RCD Water Quality Coalition advisory and governing board members agreed that sharing some information and resources from the irrigated lands program could help minimize costs and potential duplicate reporting by landowners and growers to yet another agency. One example of this effort will be starting with the 2022 Crop Year. You will see additional (optional) questions related to water source in your online farm reporting. If you have questions or concerns please give us a call or bring your questions to the October 27th **All Member Meeting** (See insert for details).

UPDATE ON GSP: The Solano Subbasin Groundwater Sustainability Plan was finalized and submitted to the State Department of Water Resources for their review in January 2022 and funding structures were adopted for the next five years. For more information visit solanogsp.org

Inside this issue:

Surface Water Update	2
Delta Landowners!	2
Pesticide Disposal	2
SRCD Education Program Update	Insert
OUTLIERS Grower Feedback Reports	Insert
Ag Water Efficiency Program	Insert
Plant Sale	Insert
All Member Meeting Details	Insert
Who is the SVWQC?	3
Drinking Water Well Requirements	3
Farm Reporting Requirements for 2022 Crop Year	4
Sign up for Alert SOLANO	4
Annual Budget and Financial Update	4
Staff Contact Information	4
Board and Advisory Committee Members	4

Drought and the “Savings Account”



August 2022 – Lake Berryessa, “The Glory Hole”
Photo credit: Harvey Cazares

I saw this recent picture of “The Glory Hole” the other day and it made my heart sink. It certainly is a good representation of how dire our water resources are right now during these extreme dry years. It made me think about all this talk about groundwater recharge and how we can “bank” water into the “savings account” and start to prepare now for when the rain falls again.

Remember those two big storm events in October and December 2021? If we were to prepare ahead of time for events such as that, we could possibly use future storm water for groundwater recharge. There are many different aspects that must be determined before a landowner can jump right into a groundwater recharge project. So give it some thought, if you haven’t already, as to where you could “bank” water into the “savings account” for the future. Be sure to join us January 24th for our Groundwater Workshop where we will have presentations from experts on the subject.

IMPORTANT DATES/TIMES TO REMEMBER

Dates to know!	OCTOBER 27, 2022— 6PM TO 7PM.....ALL MEMBER “HYBRID” MEETING
	DECEMBER 1, 2022MEMBERSHIP FEES DUE
	JANUARY 24, 2023.....GROUNDWATER WORKSHOP
	FEBRUARY 15, 2023.....FARM REPORTING DUE

Ag Water Efficiency Program

The combination of high temperatures and very little rainfall can be the recipe for one of the most common natural disasters across the United States; droughts. California declared a drought emergency in July 2021, with the goal of reducing water usage by 15%. To address this goal, the Solano RCD in partnership with the Solano County Water Agency and other local partners, have re-invigorated the Solano Agricultural Water Efficiency Program, providing education and technical support to producers year-round.

Any producers interested in improving their water use efficiency or interested in brainstorming irrigation or nitrogen management solutions on your property can contact the program. Our team can walk the site with you and conduct hands-on distribution uniformity testing as well as evapotranspiration uniformity via drone spectroscopy data. From there, we can suggest potential water efficiency solutions, land management practices and financial assistance programs for your property. If you use a well for your farm or ranch and are interested in finding areas of cost-savings in your operation, consider having a professional conduct a pump efficiency test on your well system. The Solano Ag Water Efficiency Program will cover the cost of the test.



Drone infrared thermal test conducted on a field with buried drip to determine irrigation distribution and evapotranspiration uniformity.



Kevin Young-Lai (Solano RCD) conducting flow measurement tests on dripline.

NOTE:

On a first-come, first-served basis, the Solano RCD can also provide M.K. Hansen AM400 soil moisture loggers to any producer who is in need of a replacement logger or wants to begin testing their soil moisture levels.

For questions about the Ag Water Efficiency Program or to schedule a visit and analysis, please contact Kevin Young-Lai at: (707) 678-1655 x 123 or email kevin.young-lai@solanorcd.org



Kevin Young-Lai (Solano RCD) flushing out the lines to diagnose plugging issues.

All Member's Hybrid Meeting (In person and Online) October 27, 2022 at 6pm—7pm

Reservations required: Contact Martha at (707) 678-1655 x103 or martha-mckeen@dixonrcd.org

Location: 1170 N. Lincoln Street, Suite 109 Dixon, CA 95620
(The meeting room is directly across the hall from the RCD office.
Refreshments will be served.)

There is limited space and only the first 25 members to make reservations will be able to attend the meeting in person. If you make reservations and you are unable to attend, please cancel so that others on the waiting list can be invited to attend in person. For the Zoom link and call-in number, visit our website at: dixonrcd.org/workshops-events

0.5 INMP CE-continuing education for Irrigation and Nitrogen Mgmt is pending.

Solano RCD Native Plant Sale*

November 12, 2022

12 noon — 5 pm

Ruhstaller Farm

6686 Sievers Rd.

Dixon, CA 95620

For questions call Caitlyn at:

(707) 678 -1655 x101

*Plants quantities are limited—come early!

Solano RCD Education Program Update

Student scientists from across the county return to in-person field trips this fall. Last winter, only a sprinkling of students were able to get a glimpse of what field work was like when they masked up and explored their school campus or local park with Solano RCD educators. Now, with mask requirements lifted for many, students can take a breath and relax in the hopes that the challenging days of the pandemic have eased.

For the 22-23 school year Solano RCD is will offer programming to:

- 1400 3rd graders for the Watershed Explorers Program
- 1400 6th graders for the Suisun Marsh Program
- 500 high school students for the Biomonitoring Program
- All Benicia 4th and 5th grade students for the Benicia Water Program
- 4000 K-12 students for the School Water Education Program

These programs, combined with adult education programming including our Boater Outreach Program, Solano Water Institute for Teachers and three annual County-wide Cleanup Events, will engage 15,000 Solano County residents in active, hands-on stewardship this year. Additionally, students in several programs will have the opportunity to plant grass plugs near creeks and lakes throughout the County as they contribute to active restoration projects.

If you are a landowner interested in planting a native hedgerow or swale, Solano RCD has resources to provide guidance, plants, and irrigation supplies for your project. Contact us to discuss project goals, planning and timelines.

For more information or to volunteer with these or any Solano RCD project, please visit solanorcd.org or call (707) 678-1655 x101

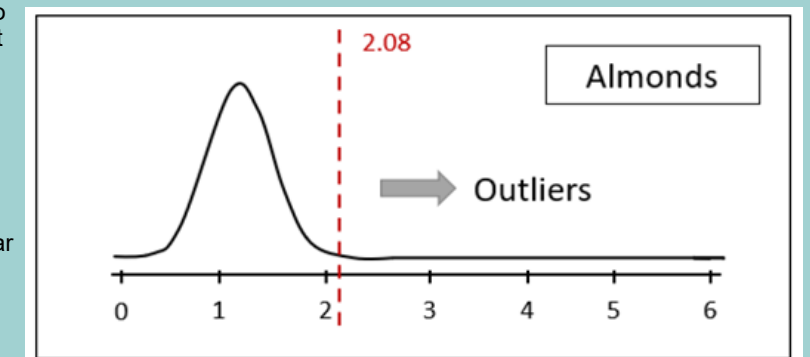
OUTLIERS on the Grower Feedback Report

The purpose of identifying outliers: An outlier is an early indicator that excess nitrogen might be being applied to the field. Identifying outliers can help the Coalition and Members work together to implement improved nitrogen management practices.

Outliers explained:

The example below shows the distribution of A/R values for almond growers in the Coalition. The peak of the curve represents the calculated A/R value for most growers. The red dashed line represents the calculated threshold value. A/R values to the right of the calculated threshold value are considered outliers. The growers with fields that have outlier A/R value are notified with annual grower feedback reports in the online DMT- Data Management Tool. The grower feedback report is a tool to help the grower be more aware of the nitrogen usage on their crops and compare them with other growers in the region, but the overall goal is to encourage growers to have better nitrogen management and reduce the amount of nitrogen leaching into groundwater.

A=Applied nitrogen R=Removed nitrogen



The Coalition stores your reported A/R and A/Y from year to year and summarizes this information for compliance with the Regional Board's Irrigated Lands Regulatory Program [ORDER]. Summary Reports to the Regional Board include an evaluation of outliers and summary statistics. The Coalition will evaluate changes in regional nitrogen applied and A/Y ratios from year to year to determine any trends in nitrogen usage.

It is not anticipated that a single season A/Y number that is considered an outlier will mean that the management unit or field is out of compliance and subject to enforcement actions by the Regional Board. The Coalition will evaluate data using running averages over multiple years and work with growers to better understand the reasons for high A/Y ratios such as seasonal variability of production, unexpected low yields, and weather conditions.

For more information about your grower feedback reports and Outliers, contact Martha McKeen at 707-678-1655 x103

Surface Water UPDATE

Unfortunately, on April 21, 2022, another sediment toxicity exceedance was observed at the Ulatis Creek monitoring site. We recently received the data and when a sediment sample is found to be toxic to *Hyalella** and certain criteria are met, then additional sediment chemistry analyses are required. (**Hyalella Azteca* - a common and abundant amphipod crustacean found to be most sensitive to pesticides in sediments used as test organisms.)

Although in the past there was enough information to determine that the likely cause of the sediment toxicity exceedances at Ulatis were likely caused by pyrethroid pesticides, this time it is more difficult to pinpoint the cause of the exceedance. One potential explanation is that in October and December 2021, we had two very large storm events that could have disrupted the sediment more than normal. Eight out of the nine monitoring sites in the Sac-Valley Coalition, on the valley floor, had sediment toxicity exceedances in April 2022 which is a very abnormal situation. This exceedance will extend our current sediment toxicity management plan at Ulatis Creek for another three years.

The good news is that water column testing has continued at Ulatis Creek, as well. There was not a water column exceedance this year in June at Ulatis Creek and there has not been one since the significant exceedance on June 23, 2021. So, that says a lot about the efforts growers and applicators are taking to keep pesticides out of surface waters by using best management practices - BMPs. Please continue to use extreme caution with pyrethroid applications.

For a list of pyrethroid active ingredients, useful tools, and information, visit dixonrcd.org/bmps-for-pesticides



Calling all Delta Landowners!

Solano RCD is looking for landowners in the primary Delta area interested in conservation work on their property. We can brainstorm ideas with you for implementing BMPs such as cover crops, vegetated waterways, irrigation audits and efficiency testing, windbreaks, hedgerows, pollinator habitat, and many more. After creating a Conservation Plan for your property that details the practices you are interested in, we can help you identify and apply for funding to put them in place.

Please contact Amy King at: amy.king@solanorcd.org or 530-848-3551 to chat about the possibilities for your property or operation.

Pesticide Disposal Program

The Solano RCD, in partnership with the County of Solano, Dixon RCD and CalRecycle, are working to identify a sustainable model for our agricultural community to safely manage and dispose of hazardous materials. A pilot program was created to assist producers with the disposal cost of pesticides that have expired or are no longer legal to apply. This pesticide disposal program will last until grant funds are depleted, or on December 31, 2023, whichever comes first. The size and quantity of disposal will be based on U.S. Department of Transportation limits which limit individuals to transport up to 15 gallons or 125 pounds of hazardous material in 5-gallon containers, or smaller, per visit to a permitted hazardous waste facility. However, any size and quantity exceeding these limits are not excluded from this pesticide disposal program but will be subjected to further review.

If you have pesticides or other unidentified hazardous materials in need of disposal, please contact Kevin Young-Lai at: (707) 678-1655 x 123 or email kevin.young-lai@solanorcd.org



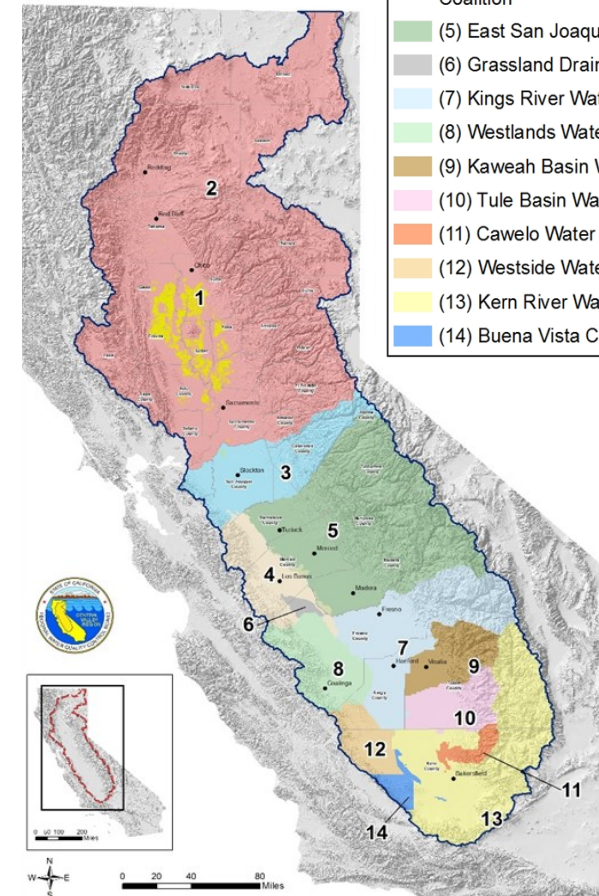
Legacy pesticides that are no longer usable earmarked for disposal



WHO IS THE "SACRAMENTO VALLEY WATER QUALITY COALITION?"

Third-Party (Coalition) Boundaries

- Central Valley Regional Water Quality Control Boundary
- (1) California Rice Commission*
- (2) Sacramento Valley Water Quality Coalition
- (3) San Joaquin County & Delta Water Quality Coalition
- (4) Westside San Joaquin River Watershed Coalition
- (5) East San Joaquin Water Quality Coalition
- (6) Grassland Drainage Area **
- (7) Kings River Watershed Coalition Authority
- (8) Westlands Water Quality Coalition
- (9) Kaweah Basin Water Quality Association
- (10) Tule Basin Water Quality Coalition
- (11) Cawelo Water District Coalition
- (12) Westside Water Quality Coalition
- (13) Kern River Watershed Coalition Authority
- (14) Buena Vista Coalition



Dixon/Solano RCD Water Quality Coalition is one of twelve subwatershed groups under the Sacramento Valley Water Quality Coalition (SVWQC). SVWQC is the signatory to the group permit with the Regional Water Board on behalf of all members in the Sacramento Valley. SVWQC is one of fourteen coalitions in the Central Valley. SVWQC provides regional support to the subwatershed groups and is administered by the Northern California Water Association. Although each subwatershed has local governance and staff, we are always looking for ways to provide value and cost-savings to members by leveraging resources at the regional level. In 2022-2023, grower representatives and staff from each of the subwatersheds will be focusing efforts on looking for more ways to reduce local and regional costs to members in an effort to offset continuing increases in the state level fees. This could mean that you receive more communication that is for "SVWQC members" vs. "Dixon/Solano members". Just remember, you are both and your local staff and grower representatives are continuing working on your behalf to make this program as cost-effective and valuable for individual members as possible.

DWW - Drinking Water Well Requirements

By now most of you have heard about the new requirements for landowners to test their drinking water wells-DWW. Here is the dirt on that requirement.

The requirement is for DWWs that are on parcels enrolled in the ILRP - Irrigated Lands Regulatory Program and are actively used for human consumption (drinking and/or cooking).

After 3 years of consecutive samples...

If all results are less than **8 mg/L**, sampling is reduced to once every 5 years.

If samples are between **8-10 mg/L**, continue to sample annually.

If at any point the sample result **exceeds 10 mg/L**- notification requirement to the user and the Regional Board, then no further sampling is required. (Safe drinking levels are 10 mg/L or less, nitrate + nitrite as nitrogen)

For more information about DWW visit: dixonrcd.org/drinking-water-well-monitoring