

# SUNDAY OCTOBER 24, 2021 – 11:25 AM

## WALMART & CARDINAL HEALTH PONDS

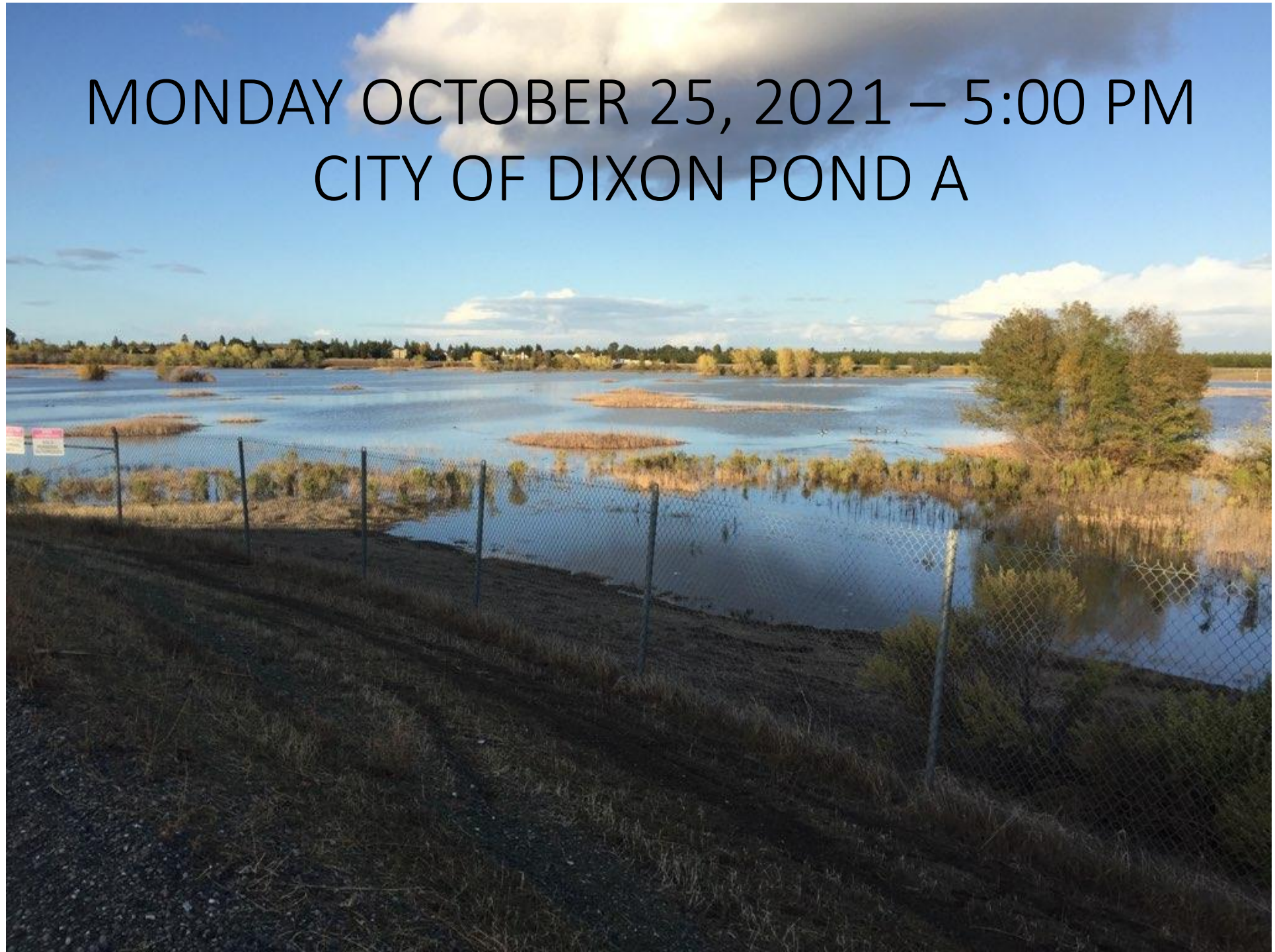


SUNDAY OCTOBER 24, 2021 – 3:36 PM  
CITY OF DIXON POND A





MONDAY OCTOBER 25, 2021 – 5:00 PM  
CITY OF DIXON POND A





SATURDAY NOVEMBER 6, 2021 – 1:24 PM  
CITY OF DIXON POND A





SUNDAY OCTOBER 24, 2021 – 2:30 PM LATERAL  
2 PEDRICK ROAD SOUTH OF DIXON AVE









SUNDAY OCTOBER 24, 2021 – 3:30 PM  
CITY OF DIXON POND C TO LATERAL 2











SUNDAY OCTOBER 24, 2021 – 1:00 PM  
LATERAL 3 ROBBEN ROAD SOUTH OF DIXON AVE







SUNDAY OCTOBER 24, 2021 – 2:30 PM  
LATERAL 2 PEDRICK ROAD SOUTH OF MIDWAY RD



# SUNDAY OCTOBER 24, 2021 – 2:30 PM

## SILVEY JOY LATERAL CASEY ROAD





SUNDAY OCTOBER 24, 2021 LATERAL 1 HWY  
113 SOUTH OF CASEY ROAD







**MONDAY OCTOBER 25TH**

MONDAY OCTOBER 25, 2021 – 9:30 AM  
MILK FARM / CURREY RD ABOVE TREMONT 3

















MONDAY OCTOBER 25, 2021 – 9:45 AM  
MACE BLVD TREMONT 1













MONDAY OCTOBER 25, 2021 – 10:15 AM  
RUNGE RD/VAUGHN RD TREMONT 3



















MONDAY OCTOBER 25, 2021 – 11:30 AM-2:00 PM  
LATERALS 1, 2, 3

















































MONDAY OCTOBER 25, 2021 – 12:00 PM  
DIXON MAIN DRAIN – SWAN ROAD





MONDAY OCTOBER 25, 2021 – 12:00 PM  
DIXON MAIN DRAIN – SWAN ROAD









MONDAY OCTOBER 25, 2021 – 4:00 PM  
NEQ/AISA INTO TREMONT 3 – BUTTON LANE









MONDAY OCTOBER 25, 2021 – 4:00 PM NEQ/AISA INTO TREMONT 3 –  
LOOKING BACK FROM RR TOWARD BUTTON LANE









MONDAY OCTOBER 25, 2021 – 4:00 PM NEQ/AISA INTO TREMONT 3 –  
LOOKING EAST FROM RR START OF DIXON RCD TREMONT 3 DITCH





MONDAY OCTOBER 25, 2021 – 4:00 PM SPARLING LANE NORTH OF KIDWELL  
DRAINAGE FROM HWY 80 INTO TREMONT 1 –





MONDAY OCTOBER 25, 2021 – 4:30 PM CORNER OF  
VAUGHN AND RUNGE – TREMONT 3









**TUESDAY OCTOBER 26TH**



TUESDAY OCTOBER 26, 2021 – 11:00 AM

TREMONT 3 – SIKES FROM HACKMAN TO MIDWAY

These properties did not begin draining until Thursday October 27, 2021





## EASTSIDE OF SIKES









## WESTSIDE OF SIKES JUST NORTH OF MILLER ROAD





## WESTSIDE OF SIKES JUST NORTH OF MILLER ROAD





# TREMONT 3 EASTSIDE OF SIKES WHERE SYSTEM TURNS EAST ON NORTH SIDE OF HD DAIRY







DIXON RCD TREMONT 3 AT MIDWAY.  
TRANSITION FROM RCD TO RD 2068 SYSTEM

